



ERA AIRPORT STATISTICS

This issue features the results for the ERA reporting airports for the period January to July 2006.

The charts and tables in this issue are comprised of data from 18 airport members who are members of the airport reporting scheme.

If you would like more information or have any comments on Airport Statistics or if your airport wishes to submit data please contact the Statistics Department of the ERA Directorate at statistics@eraa.org. Further statistics are available on the ERA website at www.eraa.org/fly-europe/statistics.php

KEY INDICATORS - 2006 v 2005

January to July Growth

Passengers enplaned	6.8%
Movements	1.2%
Total Freight Tonnes	10.2%
Employees	0.3%
Operators	-3.1%
Routes	2.1%

July Growth

Passengers enplaned	6.8%
Movements	1.0%
Total Freight Tonnes	1.5%
Employees	0.3%
Operators	-1.8%
Routes	4.4%

The data in this publication are voluntarily supplied by ERA reporting airports. The Directorate's thanks go to these airports. To ensure true comparisons year on year, these statistics are based on figures provided by the same group of airports for each of the periods being compared. On occasions it may be necessary to alter some graphs from previous issues retrospectively when additional airports enter the system. Rounding the data may cause some distortion to graphs. Interpretation of graphs and charts is undertaken by the ERA Directorate staff and does not necessarily reflect the views of individual members. The ERA Directorate does not take responsibility for any conclusions that may be drawn from the processing, analysis and interpretation of the tables and charts after Airport Statistics has been downloaded. The source must be acknowledged in reproduction of any part of the document.

INDIVIDUAL AIRPORT STATISTICS

January to July 2006

Airport	Passengers (000)	06/05 % change	Movements (000)	06/05 % change	Freight Tonnes	06/05 % change
Antwerp	88.0	6.2	35.1	10.9	3911.0	36.5
Athens	8385.8	3.0	108.1	3.0	68862.0	5.4
Bucharest Baneasa International	261.8	81.3	7.2	-12.1	547.1	-21.7
Cardiff	1088.6	10.2	24.6	-0.8	1501.3	-0.5
Düsseldorf Mönchengladbach	19.2	-12.3	25.6	-1.4	3.6	-97.4
Florence	721.7	-26.0	13.2	-32.9	132.1	-84.3
Frankfurt-Hahn	2067.0	19.7	22.4	6.7	148649.0	24.3
Hannover	3222.2	2.6	50.8	-0.3	9021.0	-3.5
London City	1364.6	17.4	46.0	11.9	519.2	-22.2
Munich	17369.2	7.7	236.6	2.8	132905.0	4.9
Nuremberg	2283.2	4.5	45.3	3.5	6764.0	20.1
Salzburg	1156.6	9.5	38.1	-5.6	126.0	17.3
Southampton	1083.2	5.0	26.9	7.7	102.0	-23.9
St.Gallen-Altenrhein	56.2	2.7	1.4	-3.5	14.0	0.0
Stuttgart	5711.9	12.5	84.0	5.0	17021.0	19.7
Vienna	9335.1	7.7	139.0	-0.5	125116.0	24.4
Zürich	10872.8	6.0	152.2	-3.0	171979.0	-1.2

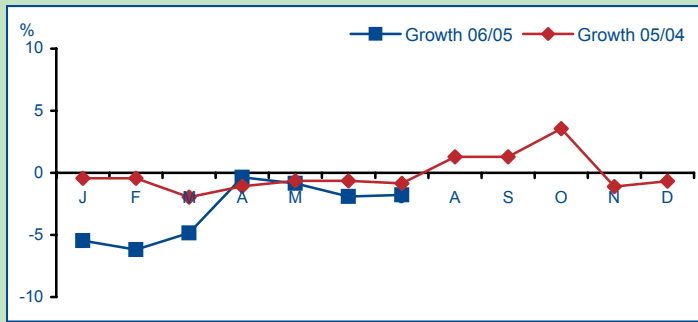
July 2006

Airport	Passengers (000)	06/05 % change	Movements (000)	06/05 % change	Freight Tonnes	06/05 % change
Antwerp	11.4	-2.6	5.2	2.6	513.0	25.1
Athens	1686.8	6.4	19.4	7.8	10495.0	3.3
Bucharest Baneasa International	76.7	70.3	1.6	34.8	91.7	-41.6
Cardiff	230.6	8.2	4.6	-7.4	245.3	39.4
Düsseldorf Mönchengladbach	3.5	-23.0	3.8	-27.2	0.6	-98.2
Florence	186.4	17.2	3.3	5.6	18.0	-86.5
Frankfurt-Hahn	366.6	24.1	3.5	-1.1	20830.0	-1.2
Hannover	606.7	-3.1	8.3	-2.2	1390.0	7.6
London City	206.0	21.1	6.4	7.0	67.0	-27.4
Munich	2846.6	7.3	37.1	4.6	19877.0	2.1
Nuremberg	308.0	10.3	6.8	3.4	998.0	22.6
Salzburg	174.9	6.2	7.4	7.2	17.3	9.1
Southampton	196.9	1.2	4.3	1.5	18.0	-14.3
St.Gallen-Altenrhein	7.3	-6.5	0.2	-7.5	2.0	0.0
Stuttgart	904.2	9.2	12.9	5.2	2384.0	3.0
Vienna	1698.0	3.0	21.5	-6.8	16548.0	8.3
Zürich	1898.8	5.7	24.0	-1.5	22985.0	-2.8

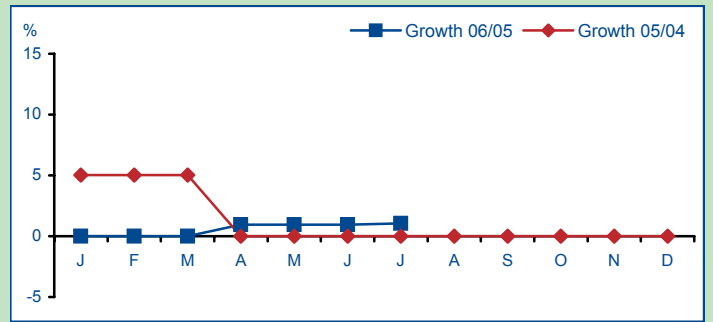
For an Excel version of the above tabs please click [here](#)

CHARACTERISTICS - January to July 2006

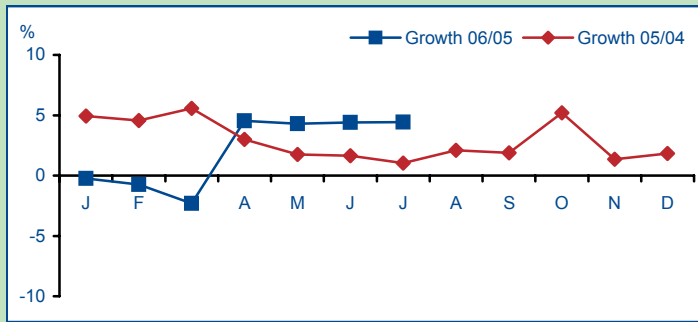
Operators



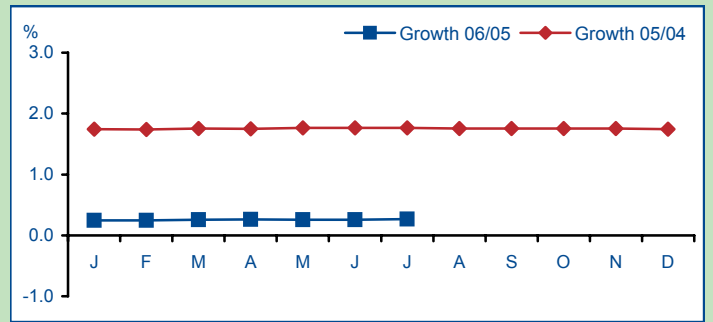
Gates



Routes

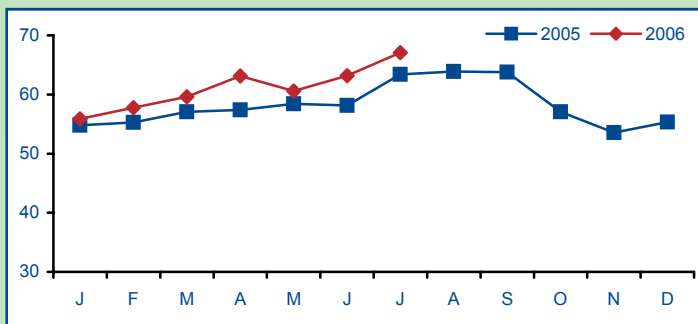


Employees*

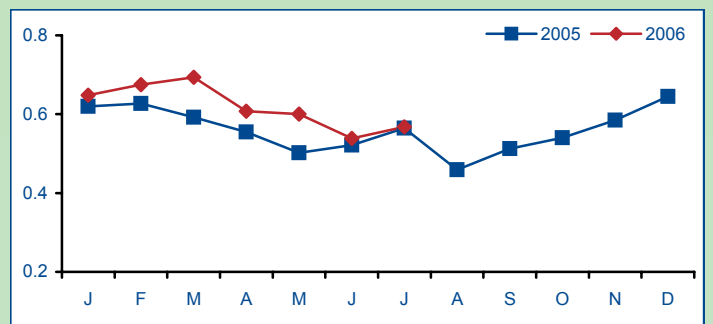


BENCHMARKING - January to July 2006

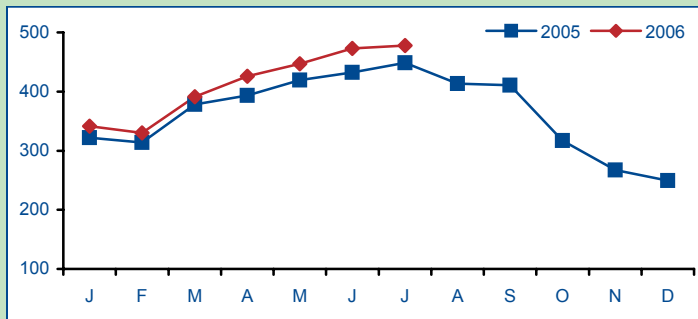
Number of Passengers per Movement



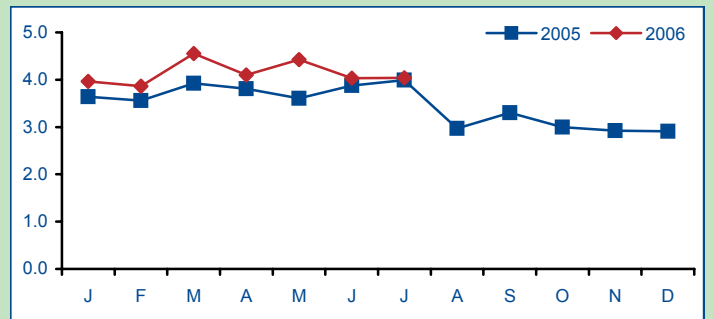
Freight Tonnes per Movement



Number of Passengers per Employee *



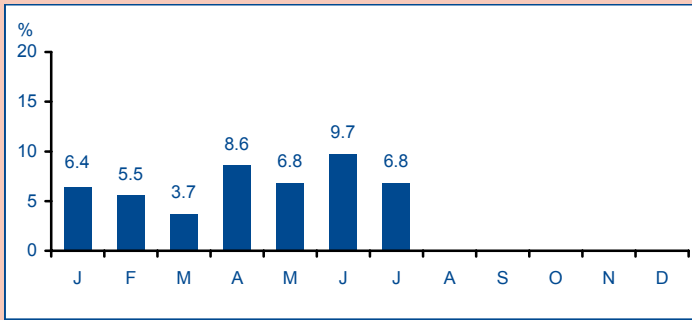
Freight Tonnes per Employee*



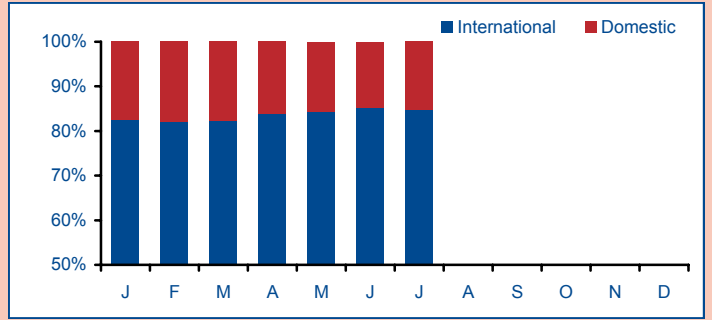
* Employees is defined as the total number of people working at the airport including sub contractors such as ground handling, catering, fuelling, concessions, security, immigration etc

TRAFFIC - January to July 2006

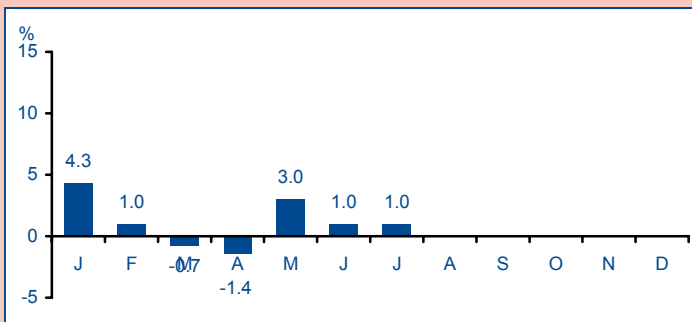
Passenger Growth



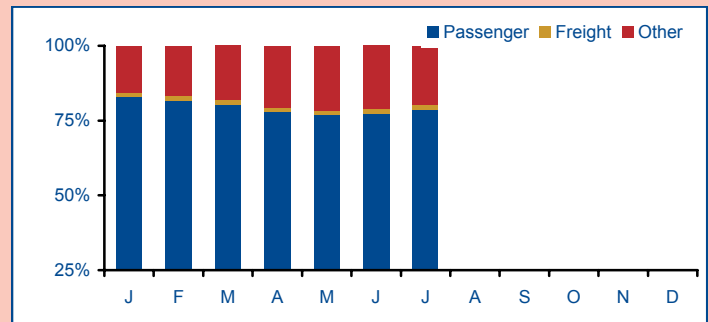
Passenger Split



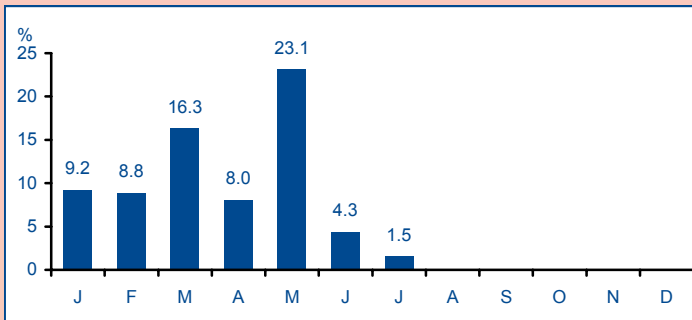
Movement Growth



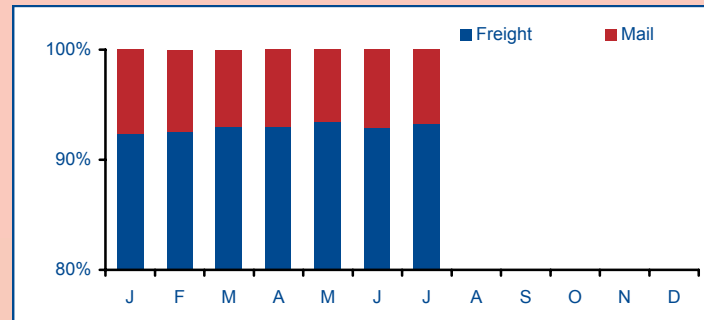
Movement Split



Total Freight Growth



Freight and Mail Tonnes



ERA CONTACT

If ERA airport members wish to contribute statistical data please contact the Directorate at the address opposite.

The Baker Suite, Fair Oaks Airport, Chobham
 Woking, Surrey, GU24 8HX
 United Kingdom
 Tel: +44 (0) 1276 485579
 Fax: +44 (0) 1276 859485
 Website: www.eraa.org
 E-mail: statistics@eraa.org