



## ERA AIRPORT STATISTICS

This issue features the results for the ERA reporting airports for the period January to October 2006.

The charts and tables in this issue are comprised of data from 19 airport members who are members of the airport reporting scheme.

If you would like more information or have any comments on Airport Statistics or if your airport wishes to submit data please contact the Statistics Department of the ERA Directorate at [statistics@eraa.org](mailto:statistics@eraa.org) Further statistics are available on the ERA website at [www.eraa.org/fly-europe/statistics.php](http://www.eraa.org/fly-europe/statistics.php)

### KEY INDICATORS - 2006 v 2005

#### January to October Growth

Passengers enplaned	6.7%
Movements	1.3%
Total Freight Tonnes	8.0%
Employees	0.3%
Operators	-1.5%
Routes	3.2%

#### October Growth

Passengers enplaned	7.3%
Movements	2.3%
Total Freight Tonnes	-0.5%
Employees	0.3%
Operators	2.0%
Routes	1.0%

The data in this publication are voluntarily supplied by ERA reporting airports. The Directorate's thanks go to these airports. To ensure true comparisons year on year, these statistics are based on figures provided by the same group of airports for each of the periods being compared. On occasions it may be necessary to alter some graphs from previous issues retrospectively when additional airports enter the system. Rounding the data may cause some distortion to graphs. Interpretation of graphs and charts is undertaken by the ERA Directorate staff and does not necessarily reflect the views of individual members. The ERA Directorate does not take responsibility for any conclusions that may be drawn from the processing, analysis and interpretation of the tables and charts after Airport Statistics has been downloaded. The source must be acknowledged in reproduction of any part of the document.

## INDIVIDUAL AIRPORT STATISTICS

## January to October 2006

Airport	Passengers (000)	06/05 % change	Movements (000)	06/05 % change	Freight Tonnes	06/05 % change
Antwerp	124.5	4.2	48.7	2.4	5745.0	46.9
Athens	12945.7	4.6	162.1	4.6	99388.5	4.2
Belfast International	4264.0	4.2	65.5	-4.5	42135.0	-0.3
Bucharest Baneasa International	561.4	77.7	13.8	4.6	916.7	-11.0
Cardiff	1754.3	10.1	36.9	-0.4	2015.9	-9.7
Düsseldorf Mönchengladbach	27.9	-15.2	37.3	0.4	3.9	-97.8
Florence	1258.6	-13.1	22.4	-20.6	173.5	-85.5
Frankfurt-Hahn	3133.7	20.4	32.8	4.1	219362.0	19.7
Geneva	8400.8	5.4	149.7	2.7	30826.0	-3.6
Hannover	5007.6	1.1	75.8	-1.3	12824.0	-4.4
London City	1980.7	19.5	66.4	11.5	760.1	-18.8
Munich	26025.0	7.0	345.2	2.8	195488.0	7.1
Nuremberg	3283.7	4.3	65.5	2.3	10077.0	20.1
Salzburg	1619.1	8.8	56.9	-3.9	173.2	10.3
Southampton	1648.9	4.5	39.6	6.5	147.0	-19.7
St. Gallen-Altenrhein	83.5	5.6	2.1	-0.6	20.0	0.0
Stuttgart	8620.8	10.3	122.6	4.1	24592.0	19.5
Vienna	14116.6	6.7	207.9	0.8	174505.0	17.9
Zürich	16306.6	6.7	220.6	-2.8	247593.0	-2.8

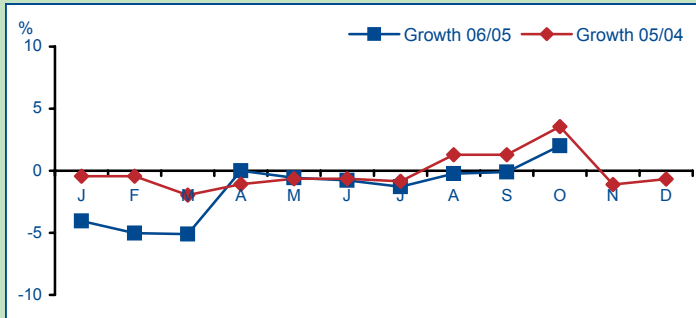
## October 2006

Airport	Passengers (000)	06/05 % change	Movements (000)	06/05 % change	Freight Tonnes	06/05 % change
Antwerp	14.3	23.8	4.6	1.2	631.0	91.8
Athens	1335.8	8.4	16.5	6.7	10601.0	-0.9
Belfast International	426.2	3.8	6.5	-0.9	4385.0	-0.7
Bucharest Baneasa International	58.6	79.5	1.6	7.3	100.5	30.7
Cardiff	197.7	12.2	3.6	6.4	188.0	-14.9
Düsseldorf Mönchengladbach	2.3	-36.7	3.4	-28.8	-	-
Florence	171.5	14.7	3.1	13.6	13.0	-89.9
Frankfurt-Hahn	347.5	23.9	3.4	-1.9	24113.0	4.4
Geneva	800.4	7.0	14.7	6.9	3040.0	-10.8
Hannover	594.2	-5.6	8.2	-1.5	1174.0	-15.1
London City	217.4	31.8	7.4	21.5	89.0	12.0
Munich	2818.1	7.1	36.2	2.8	22310.0	12.7
Nuremberg	302.9	1.2	6.5	-4.0	1019.0	16.9
Salzburg	112.1	4.9	6.0	1.5	18.2	12.1
Southampton	169.4	1.9	4.0	4.6	15.0	15.4
St. Gallen-Altenrhein	9.9	14.8	0.2	17.3	2.0	0.0
Stuttgart	888.0	5.0	12.8	2.4	2545.0	14.9
Vienna	1508.9	6.7	22.8	4.2	15788.0	-8.3
Zürich	1788.2	8.1	22.5	-2.5	31550.0	-7.5

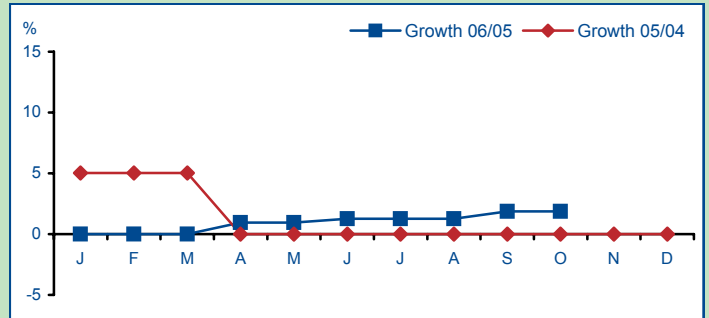
For an Excel version of the above tables please click [here](#)

# CHARACTERISTICS - January to October 2006

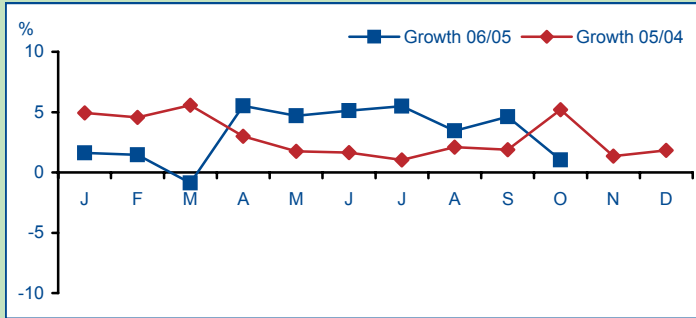
## Operators



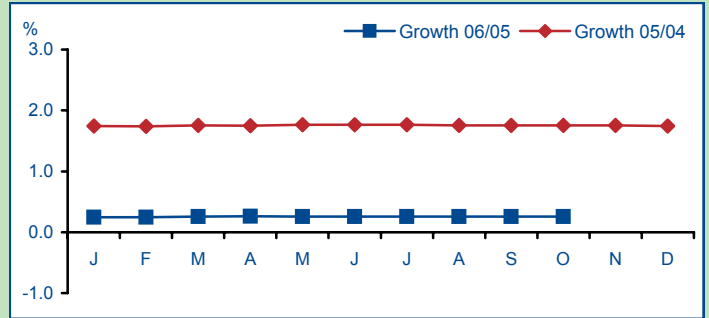
## Gates



## Routes

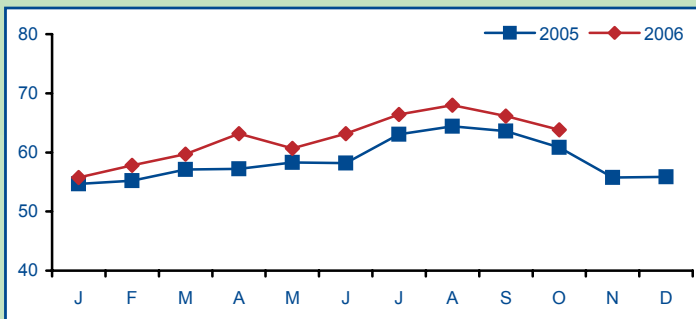


## Employees\*

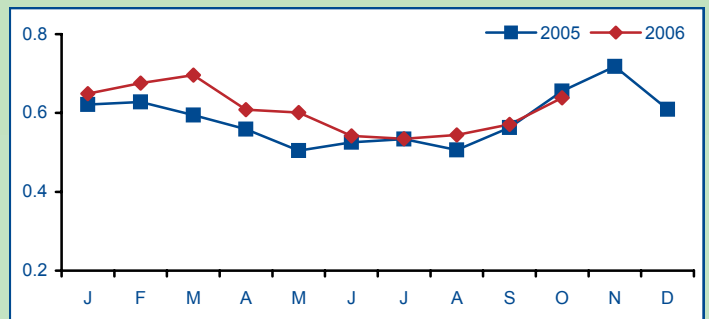


# BENCHMARKING - January to October 2006

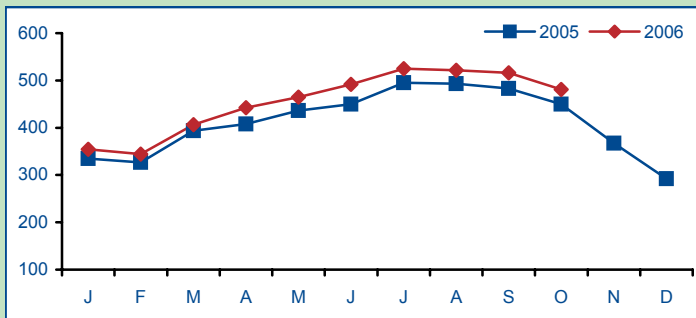
## Number of Passengers per Movement



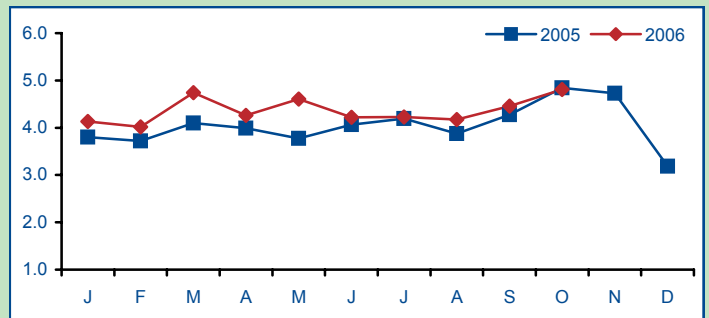
## Freight Tonnes per Movement



## Number of Passengers per Employee \*



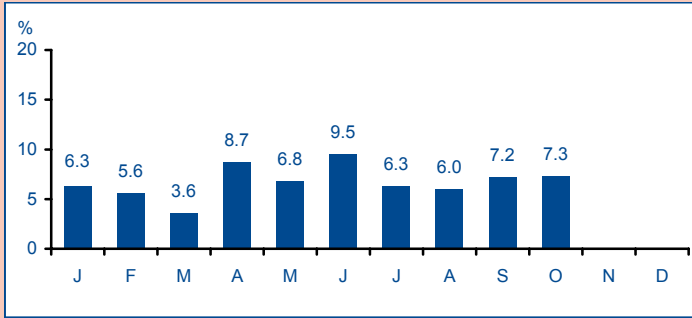
## Freight Tonnes per Employee\*



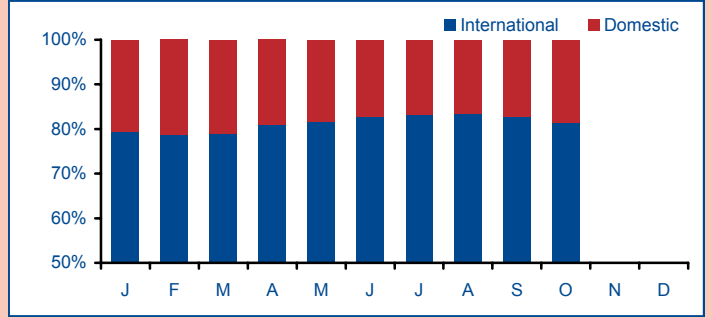
\* Employees is defined as the total number of people working at the airport including sub contractors such as ground handling, catering, fuelling, concessions, security, immigration etc

# TRAFFIC - January to October 2006

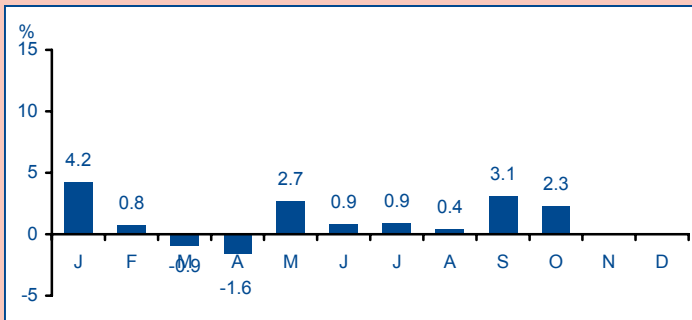
## Passenger Growth



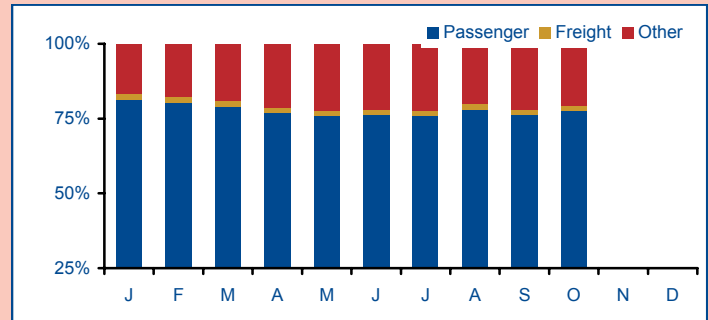
## Passenger Split



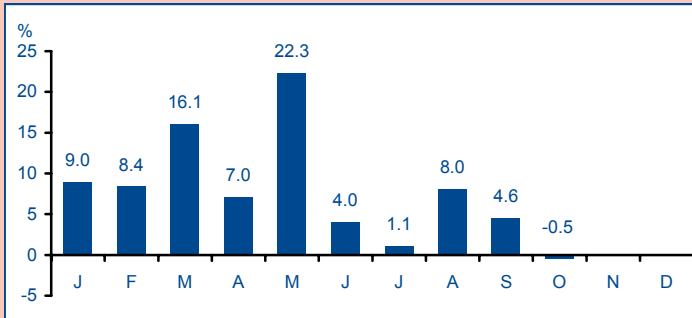
## Movement Growth



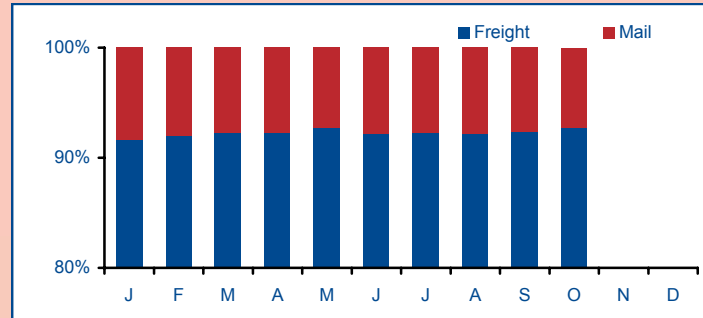
## Movement Split



## Total Freight Growth



## Freight and Mail Tonnes



## ERA CONTACT

If ERA airport members wish to contribute statistical data please contact the Directorate at the address opposite.

The Baker Suite, Fair Oaks Airport, Chobham  
 Woking, Surrey, GU24 8HX  
 United Kingdom  
 Tel: +44 (0) 1276 485579  
 Fax: +44 (0) 1276 859485  
 Website: [www.eraa.org](http://www.eraa.org)  
 E-mail: [statistics@eraa.org](mailto:statistics@eraa.org)