

## ERA AIRPORT PERFORMANCE

Welcome to Airport Performance. This issue features the results for the ERA reporting airports for the period January to November 2004.

The charts and tables in this issue are comprised of data from 14 airport members who are members of the airport reporting scheme.

If you would like more information or have any comments on Airport Performance or if your airport wishes to submit data please contact Lorna Casals at the ERA Directorate ([lorna.casals@eraa.org](mailto:lorna.casals@eraa.org)).

### KEY INDICATORS - 2004 v 2003

#### January to November Growth

Passengers enplaned	7.5%
Movements	2.1%
Total Freight Tonnes	15.3%
Employees	0.0%
Operators	-0.4%
Routes	-0.8%

#### November Growth

Passengers enplaned	5.1%
Movements	2.5%
Total Freight Tonnes	13.8%
Employees	0.0%
Operators	-3.8%
Routes	-3.2%

The data in this publication are voluntarily supplied by ERA reporting airports. The Directorate's thanks go to these airports. To ensure true comparisons year on year, these statistics are based on figures provided by the same group of airports for each of the periods being compared. Providers who have not been able to supply data for the preceding year are only included in the Airport Performance table on page 1. All other charts use comparative data. On occasions it may be necessary to alter some graphs from previous issues retrospectively when additional airports enter the system. Rounding the data may cause some distortion to graphs. Interpretation of graphs and charts is undertaken by the ERA Directorate staff and does not necessarily reflect the views of individual members. The source must be acknowledged in reproduction of any part of the document.

## INDIVIDUAL AIRPORT PERFORMANCE

January to November 2004

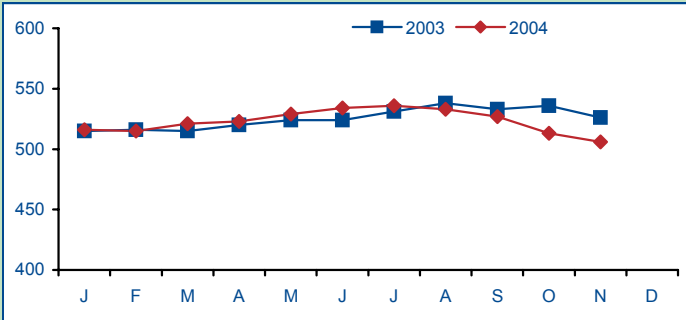
Airport	Code	Passengers (000)			Movements (000)			Freight Tonnes		
		2003	2004	% Change	2003	2004	% Change	2003	2004	% Change
Antwerp	ANR	157.4	142.2	-9.7	59.9	55.3	-7.8	3993.0	3826.0	-4.2
Birmingham International	BHX	8837.9	8368.3	-5.3	117.9	104.8	-11.1	11220.0	9375.0	-16.4
Cardiff	CWL	1811.1	1785.0	-1.4	46.0	40.7	-11.4	3219.9	2683.0	-16.7
Dusseldorf	DUS	13386.1	14328.0	7.0	172.6	186.5	8.0	43202.3	50942.2	17.9
Düsseldorf Mönchengladbach	MGL	189.0	38.3	-79.7	42.7	32.0	-25.1	289.9	377.2	30.1
Frankfurt-Hahn	HHN	2210.7	2516.8	13.8	28.5	29.2	2.5	145292.0	173461.0	19.4
Hannover	HAJ	4793.1	4942.0	3.1	81.0	80.3	-0.8	14072.0	15014.0	6.7
London City Airport	LCY	1364.3	1547.2	13.4	48.5	55.6	14.6	495.0	369.5	-25.4
Maastricht	MST	315.8	260.6	-17.5	39.2	30.2	-23.1	31401.0	38214.0	21.7
Munich	MUC	22456.2	24965.2	11.2	328.6	354.5	7.9	149628.0	176263.0	17.8
Salzburg	SZG	1174.6	1229.9	4.7	52.5	55.9	6.5	273.0	167.5	-38.6
Southampton	SOU	1119.1	1425.5	27.4	30.1	34.7	15.1	304.0	260.0	-14.5
St.Gallen-Altenrhein	ACH	94.2	92.7	-1.6	3.0	2.9	-2.6	22.0	22.0	0.0
Stuttgart	STR	6905.4	8103.5	17.4	112.8	126.8	12.4	25907.0	24545.0	-5.3

November 2004

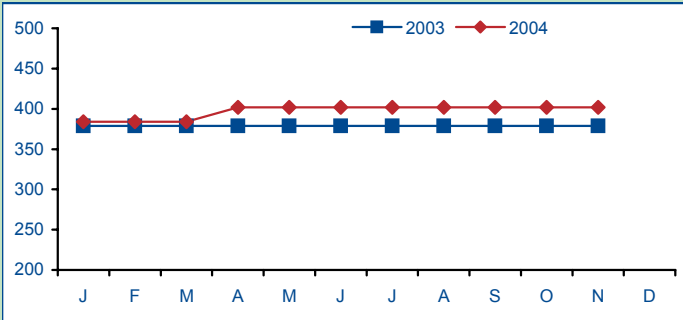
Airport	Code	Passengers (000)			Movements (000)			Freight Tonnes		
		2003	2004	% Change	2003	2004	% Change	2003	2004	% Change
Antwerp	ANR	12.7	12.7	0.4	4.6	3.7	-21.1	466.0	433.0	-7.1
Birmingham International	BHX	586.8	531.2	-9.5	9.9	8.1	-17.7	800.0	698.0	-12.8
Cardiff	CWL	105.6	95.4	-9.6	3.2	2.6	-16.8	319.0	198.0	-37.9
Dusseldorf	DUS	1071.2	1139.3	6.4	15.6	16.5	6.3	4335.8	4603.4	6.2
Düsseldorf Mönchengladbach	MGL	3.1	2.0	-33.0	2.9	3.1	8.1	32.3	37.4	15.8
Frankfurt-Hahn	HHN	199.8	204.0	2.1	2.8	2.3	-15.9	16889.0	14614.0	-13.5
Hannover	HAJ	345.9	349.5	1.0	6.3	6.2	-0.3	1372.0	2269.0	65.4
London City Airport	LCY	122.8	158.9	29.4	4.7	5.8	25.4	34.4	104.5	203.8
Maastricht	MST	18.2	13.6	-25.0	2.8	2.5	-12.9	3199.0	5564.0	73.9
Munich	MUC	1980.4	2146.5	8.4	29.5	32.3	9.5	14317.0	19482.0	36.1
Salzburg	SZG	60.3	71.7	18.8	3.3	3.5	6.4	19.5	10.4	-46.6
Southampton	SOU	105.7	116.2	9.9	2.8	3.1	10.2	27.0	23.0	-14.8
St.Gallen-Altenrhein	ACH	7.9	8.8	12.0	0.2	0.3	6.7	2.0	2.0	0.0
Stuttgart	STR	654.4	693.5	6.0	10.7	11.6	8.1	2223.0	2087.0	-6.1

# CHARACTERISTICS

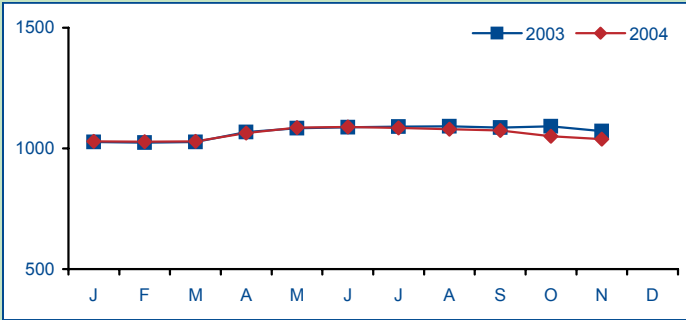
**Number of Operators (Cumulative)**



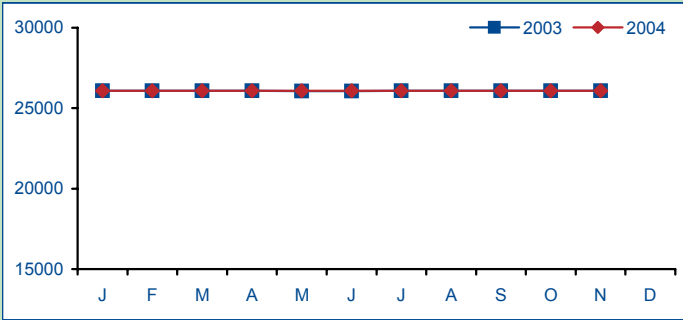
**Number of Gates**



**Number of Routes**

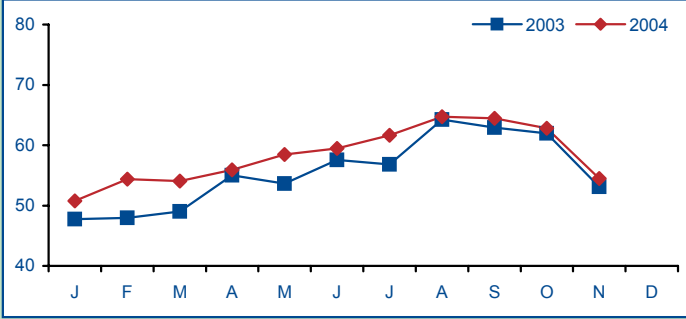


**Number of Employees\***

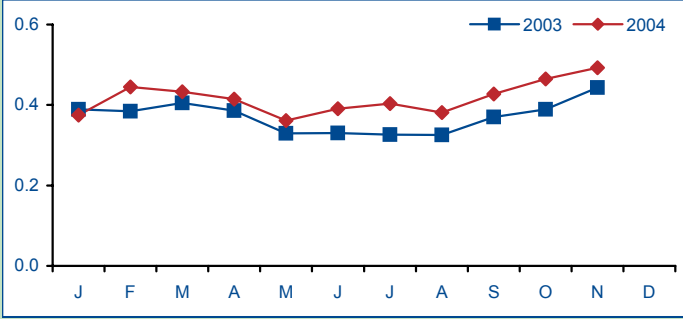


# BENCHMARKING

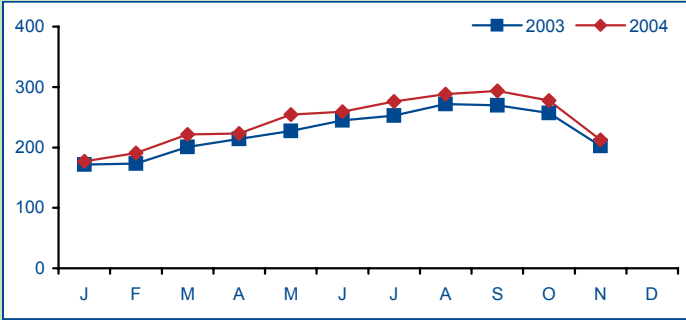
**Number of Passengers per Movement**



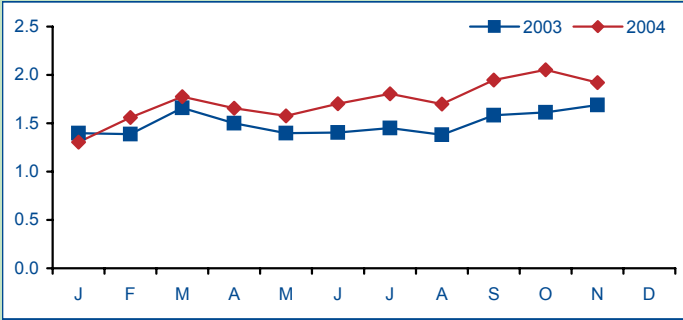
**Freight Tonnes per Movement**



**Number of Passengers per Employee \***



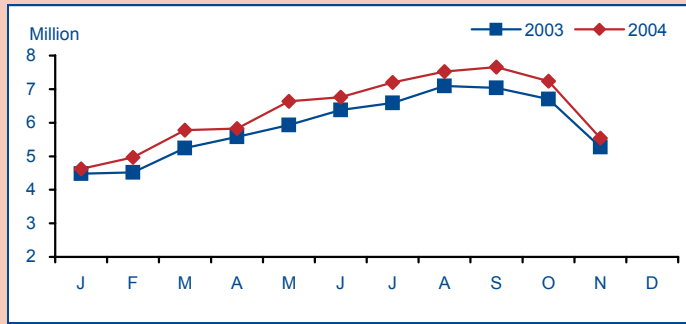
**Freight Tonnes per Employee\***



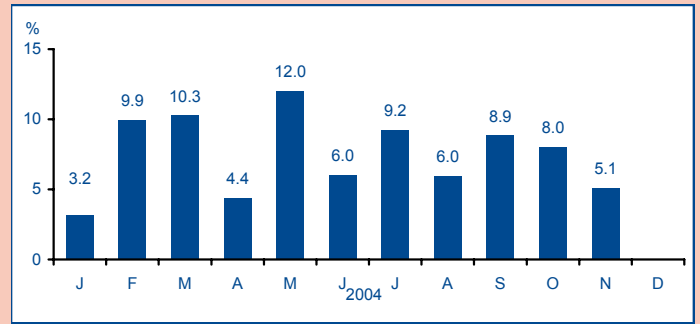
\* Employees is defined as the total number of people working at the airport including sub contractors such as ground handling, catering, fuelling, concessions, security, immigration etc

# PASSENGERS

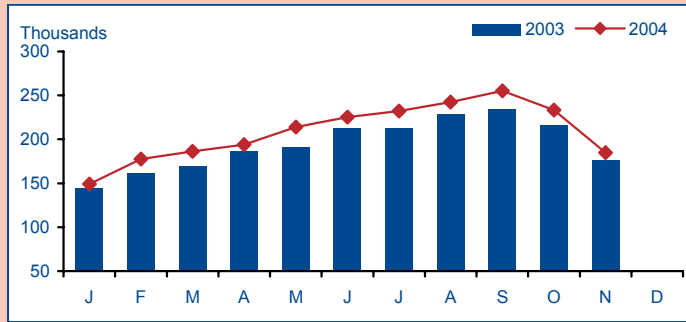
### Number of Passengers enplaned



### Passenger Growth

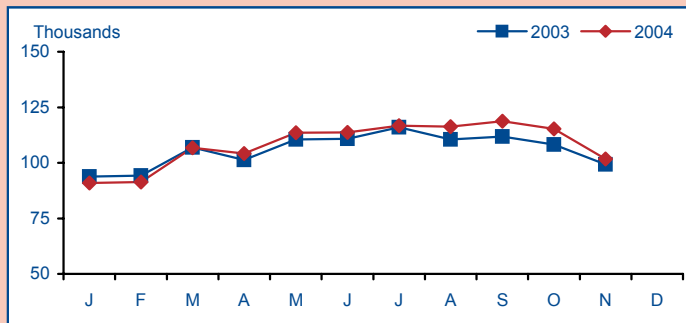


### Average Daily Number of Passengers

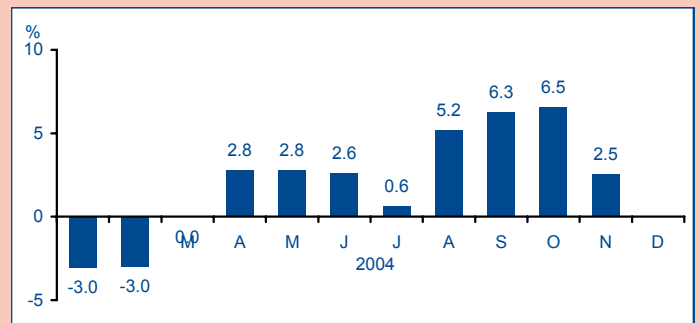


# MOVEMENTS

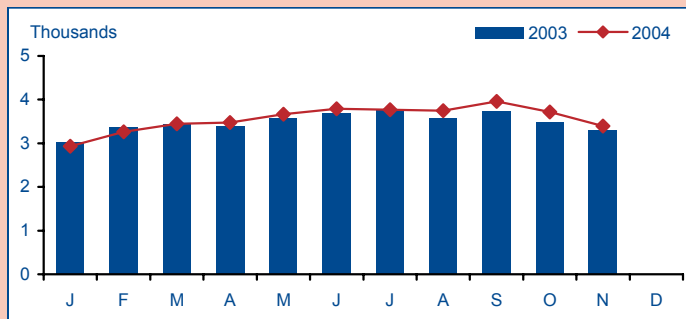
### Number of Movements



### Movement Growth

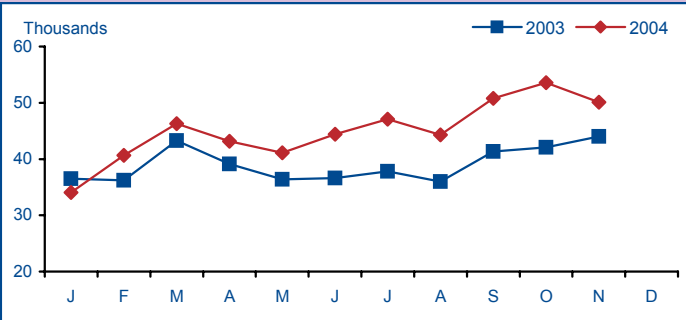


### Average Daily Number of Movements

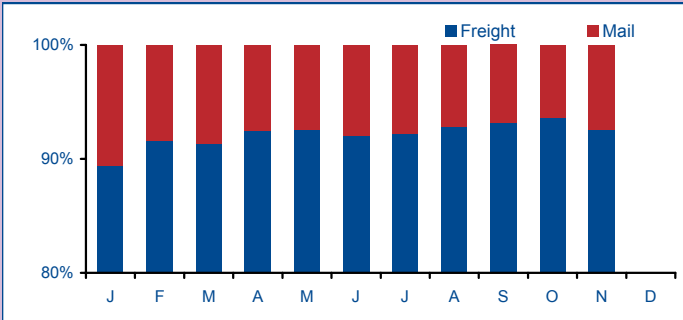


# FREIGHT

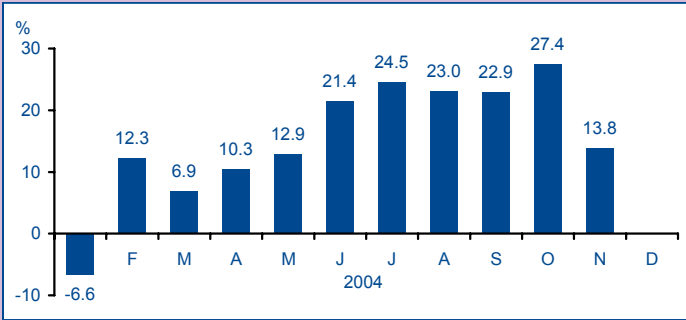
**Total Freight Tonnes**



**Freight and Mail Tonnes - 2004**



**Total Freight Growth**



# ERA CONTACT

**Lorna Ana Casals**  
 Controller Industry Analysis

If ERA airport members wish to contribute statistical data please contact the Directorate at the address opposite.

The Baker Suite, Fair Oaks Airport, Chobham  
 Woking, Surrey, GU24 8HX  
 United Kingdom  
 Tel: +44 (0) 1276 485579  
 Fax: +44 (0) 1276 859485  
 Website: [www.eraa.org](http://www.eraa.org)  
 E-mail: [controllerindustryanalysis@eraa.org](mailto:controllerindustryanalysis@eraa.org)