



# ERA MONTHLY STATISTICS

April 2003

Issue 4

Following are the interim results received so far from ERA reporting carriers for January to April 2003.

These figures reflect the provisional results of the 41 ERA member airlines which currently report data on a monthly basis.

Please note that these figures are subject to change, since data may have to be revised retrospectively when carriers are added or deleted. The final version will be published quarterly in Regional International.

Any airline member wishing to contribute data should contact Lorna Ana Casals (lorna.casals@eraa.org) for more information.

## Scheduled Key Indicators - 2003 v 2002

January to April Growth	
Passengers	5.8%
Passenger km	7.4%
Seats	5.2%
Seat km	7.7%
Hours	2.4%
Landings	1.0%
Passenger Load Factor	55.1%
Sector Distance km	527
Sector Time hr.min	1.12
Aircraft Seating Capacity	68

April Growth	
Passengers	-0.2%
Passenger km	1.0%
Seats	0.0%
Seat km	1.9%
Hours	-3.1%
Landings	-7.5%
Passenger Load Factor	59.7%
Sector Distance km	527
Sector Time hr.min	1.13
Aircraft Seating Capacity	68

The data in this publication are voluntarily supplied by ERA reporting airlines. The Directorate's thanks go to these airlines. To ensure true comparisons year on year, these statistics are based on figures provided by the same group of airlines for each of the periods being compared. Data for new members which have been in operation for more than a year are only included when the preceding year's data have been supplied. Unless otherwise indicated, comparisons given are for the same period of the previous year for reporting carriers only. On occasions it may be necessary to alter some graphs from previous issues retrospectively when additional carriers enter the system. Rounding the data may cause some distortion to graphs. Interpretation of graphs and charts is undertaken by the Directorate staff and does not necessarily reflect the views of individual members.

The source must be acknowledged in reproduction of any part of the document.

# Individual Carrier Performance

## January to April 2003

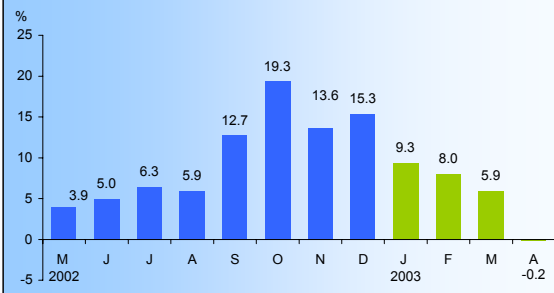
Scheduled Operations	Pax (000)		Pax	Pax km (mil)		Pax km	Seat km (mil)		Seat km	Pax Load Factor	
	2003	2002	Growth (%)	2003	2002	Growth (%)	2003	2002	Growth (%)	2003(%)	2002 (%)
Aegean Airlines	670.3	568.2	18.0	361.7	301.0	20.1	547.4	503.2	8.8	66.1	59.8
Air Botnia	184.0	157.9	16.5	119.2	96.6	23.5	274.2	211.9	29.4	43.5	45.6
Air Dolomiti	296.8	293.4	1.2	198.1	192.4	3.0	395.7	373.9	5.8	50.1	51.5
Air Nostrum	1074.6	988.4	8.7	540.6	467.8	15.6	972.0	802.4	21.1	55.6	58.3
airBaltic	84.4	71.9	17.3	55.7	45.2	23.4	100.8	89.1	13.1	55.3	50.7
Arkia Israeli Airlines	180.7	283.0	-36.2	52.5	81.3	-35.5	117.3	143.6	-18.3	44.7	56.6
ATA Aerocondor	40.0	40.5	-1.3	10.0	13.8	-27.6	13.7	18.4	-25.5	72.9	75.1
Augsburg Airways	253.4	226.1	12.1	147.9	128.0	15.5	268.1	280.2	-4.3	55.1	45.7
Binter Canarias	695.5	671.1	3.6	118.7	113.8	4.2	167.8	149.5	12.2	70.7	76.1
Brit Air (+ Air France)	922.0	892.0	3.4	620.9	623.5	-0.4	1097.4	1046.1	4.9	56.6	59.6
Cimber Air	209.3	184.9	13.2	52.0	50.1	3.8	102.3	89.6	14.2	50.9	55.9
Deutsche BA	849.4	848.6	0.1	431.1	456.0	-5.5	828.3	846.9	-2.2	52.0	53.8
EuroLOT	246.7	218.2	13.1	82.0	70.7	16.0	163.0	163.8	-0.5	50.3	43.1
European Air Express	37.3	31.3	18.9	26.0	15.1	71.8	44.2	42.3	4.5	58.8	35.8
Eurowings	985.3	844.0	16.8	436.5	357.4	22.1	780.1	701.1	11.3	56.0	51.0
flybe.	864.4	839.8	2.9	339.4	370.1	-8.3	542.1	596.1	-9.0	62.6	62.1
KLM Cityhopper	858.1	791.7	8.4	466.6	435.9	7.0	696.0	644.5	8.0	67.0	67.6
KLM Cityhopper UK	742.8	-	-	429.7	-	-	595.8	-	-	72.1	-
Lithuanian Airlines	76.3	73.6	3.7	93.8	87.4	7.3	211.0	197.0	7.1	44.4	44.4
Lufthansa CityLine	2017.7	1865.8	8.1	1216.9	1131.4	7.6	2085.8	1881.5	10.9	58.3	60.1
Malmö Aviation AB	362.5	287.5	26.1	167.6	120.4	39.2	306.1	241.5	26.8	54.7	49.9
PGA Portugália	239.8	280.6	-14.5	205.4	235.3	-12.7	417.2	426.2	-2.1	49.2	55.2
Régional	988.6	923.5	7.0	519.0	465.6	11.5	941.2	875.1	7.6	55.1	53.2
Royal Wings	18.9	14.5	30.4	4.3	2.8	52.4	10.7	7.6	40.7	39.9	36.9
Skyways	421.3	365.1	15.4	173.0	140.5	23.1	337.1	270.3	24.7	51.3	52.0
SWISS (Mainline Ops)	2174.5	1301.5	67.1	7046.0	2531.4	178.3	10048.7	3868.9	159.7	70.1	65.4
Swiss (Regional Ops)	1463.3	1561.0	-6.3	965.2	1051.5	-8.2	1960.1	2116.6	-7.4	49.2	49.7
Tyrolean Airways	797.7	722.0	10.5	504.0	392.4	28.4	910.0	687.2	32.4	55.4	57.1
Widerøe	542.0	513.3	5.6	152.3	124.9	21.9	315.1	259.9	21.2	48.3	48.1
<b>Charter Operations</b>											
Newair	37.9	18.4	105.6	-	-	-	-	-	-	-	-

## April 2003

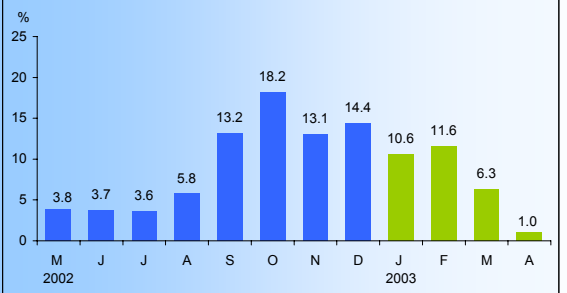
Scheduled Operations	Pax (000)		Pax	Pax km (mil)		Pax km	Seat km (mil)		Seat km	Pax Load Factor	
	2003	2002	Growth (%)	2003	2002	Growth (%)	2003	2002	Growth (%)	2003(%)	2002 (%)
Aegean Airlines	190.5	166.5	14.4	98.7	84.1	17.4	148.1	136.4	8.5	66.6	61.6
Air Botnia	53.5	47.2	13.2	34.9	29.5	18.3	68.6	57.1	20.1	50.9	51.7
Air Dolomiti	87.7	89.1	-1.6	57.8	59.4	-2.6	107.8	107.4	0.4	53.6	55.3
Air Nostrum	292.8	291.6	0.4	146.6	136.5	7.4	249.7	220.3	13.3	58.7	62.0
airBaltic	25.3	20.8	21.6	17.0	13.3	28.0	29.3	24.7	18.4	58.2	53.9
Arkia Israeli Airlines	54.1	60.6	-10.8	15.9	17.2	-7.7	31.0	31.0	-0.1	51.3	55.5
ATA Aerocondor	13.7	12.2	12.2	4.6	4.1	13.0	6.5	6.4	1.5	71.2	64.0
Augsburg Airways	62.8	75.6	-16.9	38.3	42.2	-9.2	64.6	84.1	-23.3	59.3	50.1
Binter Canarias	189.8	175.2	8.3	32.7	29.9	9.3	45.6	38.6	18.1	71.7	77.4
Brit Air (+ Air France)	257.4	245.6	4.8	174.6	174.7	-0.1	272.5	271.0	0.6	64.1	64.5
Cimber Air	53.0	47.6	11.3	13.2	12.8	2.8	25.0	22.5	11.3	52.6	57.0
Deutsche BA	242.1	252.3	-4.0	126.2	125.9	0.2	244.3	204.6	19.4	51.7	61.6
EuroLOT	67.0	61.2	9.6	22.1	19.5	13.8	42.6	41.4	2.8	52.0	47.0
European Air Express	9.4	12.6	-25.1	4.4	5.7	-23.1	13.4	14.8	-9.2	32.9	38.8
Eurowings	241.8	234.2	3.3	111.1	107.8	3.1	188.5	203.9	-7.6	59.0	52.8
flybe.	276.1	242.1	14.0	102.0	104.9	-2.8	141.9	162.9	-12.9	71.9	64.4
KLM Cityhopper	219.0	226.9	-3.5	123.5	121.8	1.4	181.6	165.7	9.6	68.0	73.5
KLM Cityhopper UK	185.2	-	-	108.7	-	-	141.6	-	-	76.7	-
Lithuanian Airlines	20.9	20.1	3.7	25.8	23.8	8.5	52.8	47.5	11.1	48.9	50.1
Lufthansa CityLine	536.6	538.5	-0.4	317.3	315.8	0.5	515.9	494.1	4.4	61.5	63.9
Malmö Aviation AB	106.9	85.5	25.1	51.3	36.0	42.6	80.0	69.7	14.9	64.1	51.7
PGA Portugália	71.8	76.8	-6.6	63.9	69.1	-7.7	115.1	117.2	-1.8	55.5	59.0
Régional	274.8	257.0	6.9	146.6	131.0	11.9	243.4	228.1	6.7	60.2	57.4
Royal Wings	4.3	4.3	1.9	1.0	0.9	8.0	2.1	2.8	-24.6	47.3	33.0
Skyways	112.7	101.1	11.5	51.1	39.5	29.5	89.5	71.6	25.0	57.1	55.1
SWISS (Mainline Ops)	534.6	534.6	0.0	1641.2	1886.0	-13.0	2469.9	2643.2	-6.6	66.4	71.4
SWISS (Regional Ops)	342.0	446.1	-23.3	227.8	294.7	-22.7	405.1	518.9	-21.9	56.2	56.8
Tyrolean Airways	210.5	209.4	0.6	137.8	119.5	15.3	234.3	185.0	26.7	58.8	64.6
Widerøe	154.7	152.2	1.6	40.3	35.3	14.3	77.0	69.1	11.4	52.3	51.0
<b>Charter Operations</b>											
Newair	6.7	4.0	70.3	-	-	-	-	-	-	-	-

# Scheduled Performance

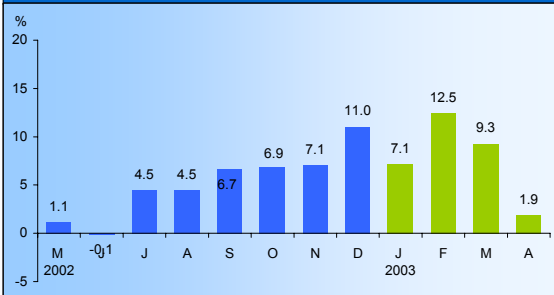
### Passenger Growth



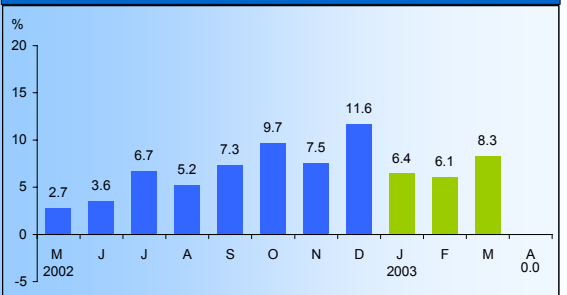
### RPK\* Growth



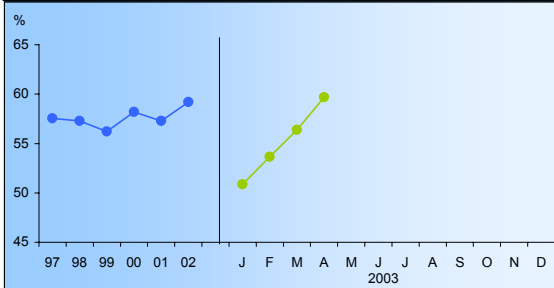
### ASK\* Growth



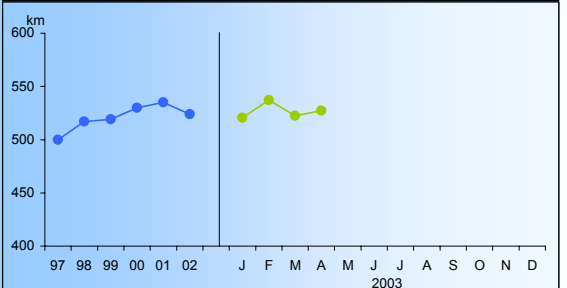
### Seats' Growth



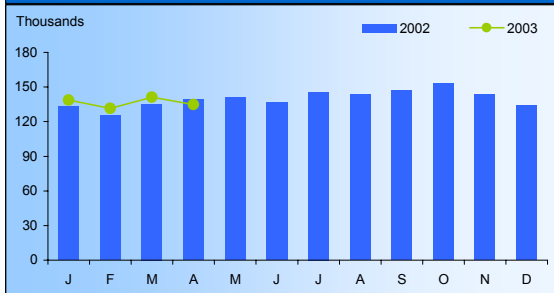
### Passenger Load Factor



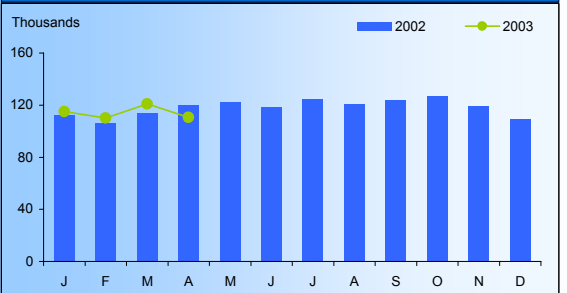
### Sector Distance



### Hours



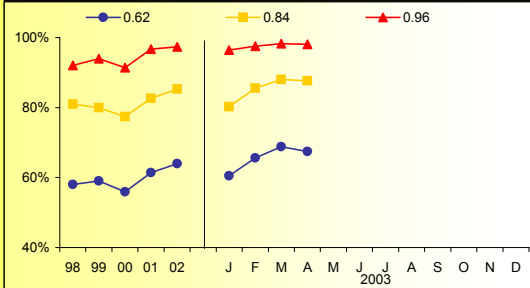
### Landings



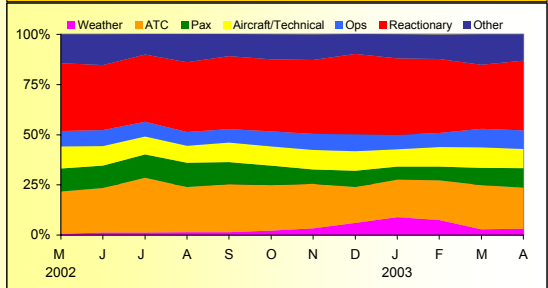
\* RPK = Revenue Passenger Kilometre    \*ASK = Available Seat Kilometre

# Punctuality

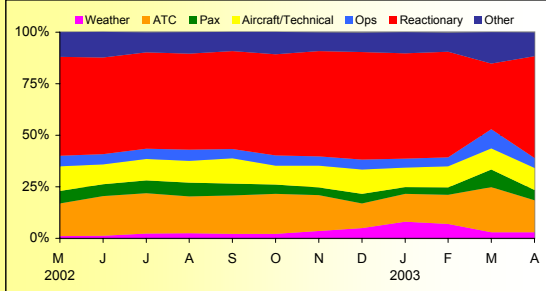
## Overall Performance



## Delay Reasons - Within 15 minutes

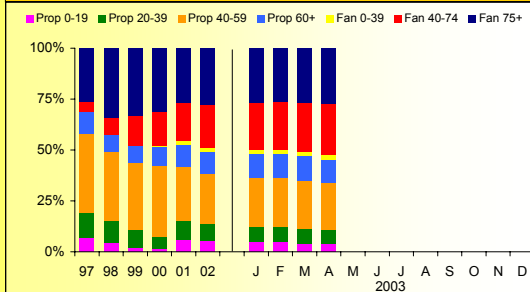


## Delay Reasons - Within 60 Minutes



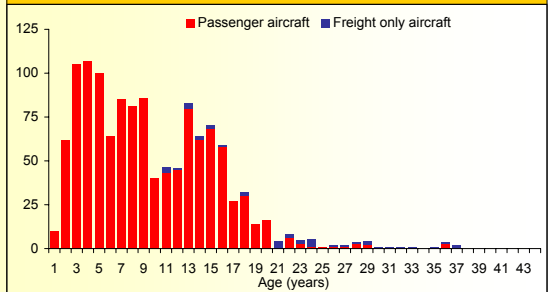
# Fleet - Entire ERA Membership -April 2003

## Fleet Share\*



\*Source: Airclaims

## Fleet Age\*



# ERA Contact

Lorna Ana Casals  
Controller Industry Analysis

If ERA airline members wish to contribute statistical data please contact the Directorate at the address opposite.

The Baker Suite, Fair Oaks Airport, Chobham  
Woking, Surrey, GU24 8HX  
United Kingdom  
Tel: +44 (0) 1276 485579  
Fax: +44 (0) 1276 859485  
Website: [www.eraa.org](http://www.eraa.org)  
E-mail: [lorna.casals@eraa.org](mailto:lorna.casals@eraa.org)  
SITA: LHRZZXH