

## ERA AIRLINE MONTHLY STATISTICS

Following are the interim results received so far from ERA reporting carriers for January to April 2004.

These figures reflect the provisional results of the 35 ERA member airlines which currently report data on a monthly basis.

Please note that these figures are subject to change, since data may have to be revised retrospectively when carriers are added or deleted. The final version will be published quarterly on the website with a summary of the key indicators reproduced in Regional International.

Any airline member wishing to contribute data should contact Lorna Ana Casals ([lorna.casals@eraa.org](mailto:lorna.casals@eraa.org)) for more information.

### SCHEDULED KEY INDICATORS - 2004 v 2003

#### January to April Growth

Passengers	3.6%
Passenger km	2.3%
Seats	1.1%
Seat km	-0.5%
Hours	-3.3%
Landings	-3.3%
Passenger Load Factor	57.9%
Sector Distance km	524
Sector Time hr.min	1.12
Aircraft Seating Capacity	68

#### April Growth

Passengers	5.3%
Passenger km	5.0%
Seats	2.8%
Seat km	4.7%
Hours	0.1%
Landings	2.2%
Passenger Load Factor	62.5%
Sector Distance km	522
Sector Time hr.min	1.11
Aircraft Seating Capacity	68

The data in this publication are voluntarily supplied by ERA reporting airlines. The Directorate's thanks go to these airlines. To ensure true comparisons year on year, these statistics are based on figures provided by the same group of airlines for each of the periods being compared. Data for new members which have been in operation for more than a year are only included when the preceding year's data have been supplied. Unless otherwise indicated, comparisons given are for the same period of the previous year for reporting carriers only. On occasions it may be necessary to alter some graphs from previous issues retrospectively when additional carriers enter the system. Rounding the data may cause some distortion to graphs. Interpretation of graphs and charts is undertaken by the Directorate staff and does not necessarily reflect the views of individual members.

The source must be acknowledged in reproduction of any part of the document.

## INDIVIDUAL CARRIER PERFORMANCE

January to April 2004

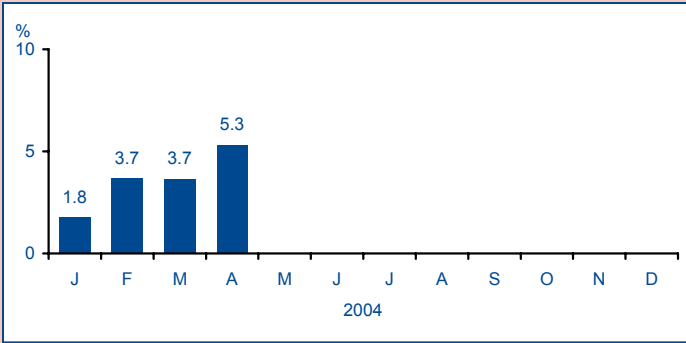
Scheduled Operations	Pax (000)		Pax	Pax km (mil)		Pax km	Seat km (mil)		Seat km	Pax Load Factor	
	2004	2003	Growth (%)	2004	2003	Growth (%)	2004	2003	Growth (%)	2004 (%)	2003 (%)
Aegean Airlines	918.5	670.3	37.0	495.6	361.7	37.0	834.2	547.4	52.4	59.4	66.1
Air Alps	80.6	69.0	16.9	50.5	47.3	6.8	89.5	87.1	2.6	56.5	54.3
Air Dolomiti	-	296.8	-	-	198.1	-	-	395.7	-31.3	-	50.1
Air Lithuania	14.0	12.0	16.7	13.3	11.3	16.9	28.1	25.9	8.5	47.2	43.8
Air Nostrum	1175.3	1074.6	9.4	607.8	540.6	12.4	1076.9	972.0	10.8	56.4	55.6
airBaltic	120.8	84.4	43.1	98.0	55.7	75.8	184.5	100.8	83.0	53.1	55.3
Arkia Israeli Airlines	162.9	180.7	-9.8	49.2	52.5	-6.1	76.6	87.7	-12.6	64.3	59.8
ATA Aerocondor	37.3	40.0	-6.6	16.5	10.0	64.6	22.0	13.7	60.1	75.0	72.9
Augsburg Airways	250.0	253.4	-1.3	111.2	147.9	-24.8	182.7	268.1	-31.9	60.9	55.1
Binter Canarias	744.2	695.5	7.0	127.5	118.7	7.5	188.2	167.8	12.2	67.8	70.7
Blue1	311.7	184.0	69.4	209.9	119.2	76.0	479.2	274.2	74.8	43.8	43.5
Brit Air (+ Air France)	903.2	922.0	-2.0	507.2	620.9	-18.3	906.7	1097.4	-17.4	55.9	56.6
Cimber Air	182.5	209.3	-12.8	46.4	52.0	-10.7	94.1	102.3	-8.1	49.4	50.9
Cityjet	389.5	261.7	48.8	260.5	227.2	14.6	473.3	343.8	37.7	55.0	66.1
Eastern Airways	118.8	-	-	46.0	-	-	110.2	-	-	41.7	-
EuroLOT	285.1	246.7	15.6	97.5	82.0	18.9	184.1	163.0	13.0	53.0	50.3
European Air Express	24.0	37.3	-35.6	13.2	17.3	-23.8	44.0	52.8	-16.8	30.0	32.8
Eurowings	-	985.3	-	-	436.5	-	-	780.1	-	-	56.0
flybe	1034.5	864.4	19.7	371.4	339.4	9.4	612.3	542.1	12.9	60.7	62.6
KLM Cityhopper	875.6	858.1	2.0	483.6	466.6	3.6	685.5	696.0	-1.5	70.5	67.0
KLM Cityhopper UK	735.2	742.8	-1.0	426.8	429.7	-0.7	563.8	595.8	-5.4	75.7	72.1
Lithuanian Airlines	88.8	76.3	16.4	110.7	93.8	18.0	217.0	211.0	2.8	51.0	44.4
Lufthansa CityLine	-	2017.7	-	-	1216.9	-	2041.5	2085.8	-2.1	-	58.3
Malmö Aviation AB	382.7	362.5	5.6	180.9	149.9	20.7	376.2	282.3	33.3	48.1	53.1
PGA Portugal	290.2	239.8	21.0	254.2	205.4	23.8	465.7	417.2	11.6	54.6	49.2
Régional	1005.7	988.6	1.7	560.3	519.0	8.0	1017.2	941.2	8.1	55.1	55.1
Royal Wings	32.9	18.9	73.8	7.7	4.3	80.4	13.4	10.7	26.0	57.2	39.9
SATA Air Açores	105.4	95.4	10.5	18.2	16.8	8.4	29.1	27.9	4.1	62.6	60.1
Skyways	402.2	421.3	-4.5	181.2	173.0	4.7	335.1	337.1	-0.6	54.1	51.3
SWISS (Mainline Ops)	2046.8	2174.5	-5.9	6166.7	7046.0	-12.5	8283.2	10048.7	-17.6	74.4	70.1
SWISS (Regional Ops)	1025.0	1463.3	-30.0	642.6	965.2	-33.4	1120.6	1960.1	-42.8	57.3	49.2
Tyrolean Airways	826.1	797.7	3.6	518.8	504.0	2.9	888.2	910.0	-2.4	58.4	55.4
Widerøe	588.8	542.0	8.6	174.1	152.3	14.3	342.1	315.1	8.6	50.9	48.3

April 2004

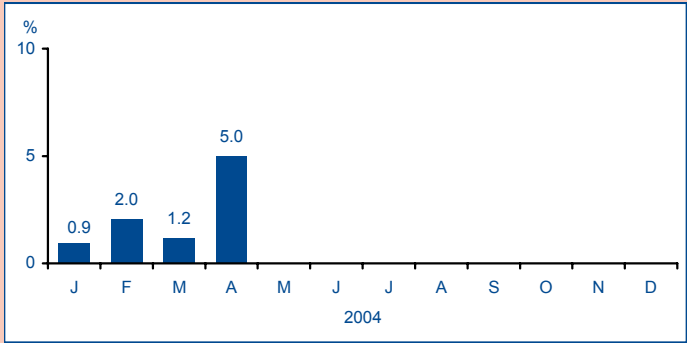
Scheduled Operations	Pax (000)		Pax	Pax km (mil)		Pax km	Seat km (mil)		Seat km	Pax Load Factor	
	2004	2003	Growth (%)	2004	2003	Growth (%)	2004	2003	Growth (%)	2004 (%)	2003 (%)
Aegean Airlines	261.2	190.5	37.1	136.6	98.7	38.4	215.3	148.1	45.4	63.5	66.6
Air Alps	18.8	16.6	13.6	10.7	11.2	-4.3	19.2	23.4	-18.2	55.9	47.8
Air Dolomiti	-	87.7	-	-	57.8	-	-	107.8	-	-	53.6
Air Lithuania	3.7	3.5	4.0	3.5	3.4	3.6	7.1	7.4	-3.4	49.1	45.8
Air Nostrum	325.1	292.8	11.0	168.3	146.6	14.8	280.7	249.7	12.4	59.9	58.7
airBaltic	43.0	25.3	70.1	36.3	17.0	113.5	68.1	29.3	132.9	53.3	58.2
Arkia Israeli Airlines	45.5	54.1	-15.9	13.9	15.9	-12.6	21.5	23.6	-8.7	64.6	67.5
ATA Aerocondor	11.9	13.7	-13.4	3.9	4.6	-15.1	4.2	6.5	-35.5	93.8	71.2
Augsburg Airways	67.6	62.8	7.6	28.1	38.3	-26.5	43.0	64.6	-33.4	65.4	59.3
Binter Canarias	209.2	189.8	10.2	36.5	32.7	11.6	49.8	45.6	9.2	73.2	71.7
Blue1	97.7	53.5	82.8	63.6	34.9	82.4	125.0	68.6	82.3	50.9	50.9
Brit Air (+ Air France)	263.7	257.4	2.5	149.3	174.6	-14.5	237.4	272.5	-12.9	62.9	64.1
Cimber Air	41.1	53.0	-22.5	11.0	13.2	-16.5	22.9	25.0	-8.4	48.0	52.6
Cityjet	113.1	71.1	59.1	82.6	61.8	33.7	119.4	91.2	31.0	69.1	67.7
Eastern Airways	31.7	-	-	12.1	-	-	27.4	-	-	44.1	-
EuroLOT	78.0	67.0	16.4	26.5	22.1	19.5	48.2	42.6	13.2	54.9	52.0
European Air Express	6.9	9.4	-26.5	3.8	4.4	-13.4	14.8	13.4	10.1	25.8	32.9
Eurowings	-	241.8	-	-	111.1	-	-	188.5	-	-	59.0
flybe	297.2	276.1	7.6	102.2	102.0	0.2	156.1	141.9	10.0	65.5	71.9
KLM Cityhopper	242.1	219.0	10.5	120.9	123.5	-2.1	164.0	161.6	-9.7	73.7	68.0
KLM Cityhopper UK	189.2	185.2	2.2	120.6	108.7	11.0	151.2	141.6	6.7	79.8	76.7
Lithuanian Airlines	25.9	20.9	24.0	32.1	25.8	24.2	56.5	52.8	7.2	56.7	48.9
Lufthansa Cityline	-	536.6	-	-	317.3	-	506.9	515.9	-1.7	-	61.5
Malmö Aviation AB	96.5	106.9	-9.7	49.5	33.6	47.2	96.9	56.2	72.4	51.1	59.8
PGA Portugal	94.1	71.8	31.1	85.9	63.9	34.5	133.1	115.1	15.7	64.5	55.5
Régional	278.9	274.8	1.5	155.6	146.6	6.1	259.0	243.4	6.4	60.1	60.2
Royal Wings	10.0	4.3	130.2	2.4	1.0	140.6	3.9	2.1	86.9	60.9	47.3
SATA Air Açores	34.2	30.3	12.8	6.0	5.7	3.6	9.4	9.1	3.3	63.2	63.0
Skyways	96.2	112.7	-14.7	41.5	51.1	-18.8	67.6	89.5	-24.5	61.4	57.1
SWISS (Mainline Operatio	552.0	534.6	3.3	1561.0	1641.2	-4.9	1992.7	2469.9	-19.3	78.3	66.4
SWISS (Regional Operatio	279.0	342.0	-18.4	178.6	227.8	-21.6	276.0	405.1	-31.9	64.7	56.2
Tyrolean Airways	229.1	210.5	8.8	140.8	137.8	2.2	229.1	234.3	-2.2	61.5	58.8
Widerøe	154.5	154.7	-0.1	47.6	40.3	18.1	83.5	77.0	8.4	57.0	52.3

# SCHEDULED PERFORMANCE - January to April 2004

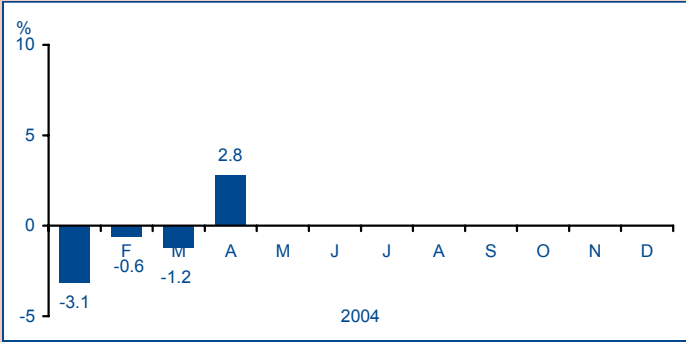
**Passenger Growth**



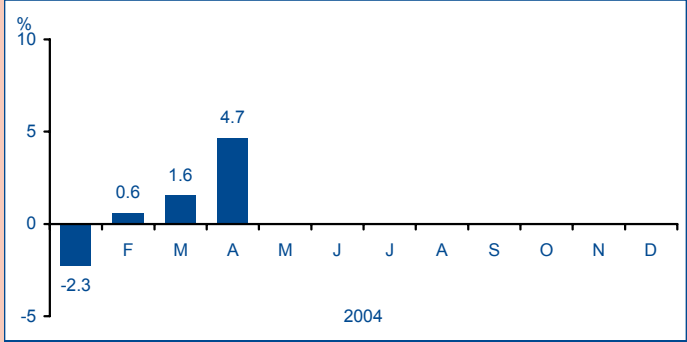
**RPK\* Growth**



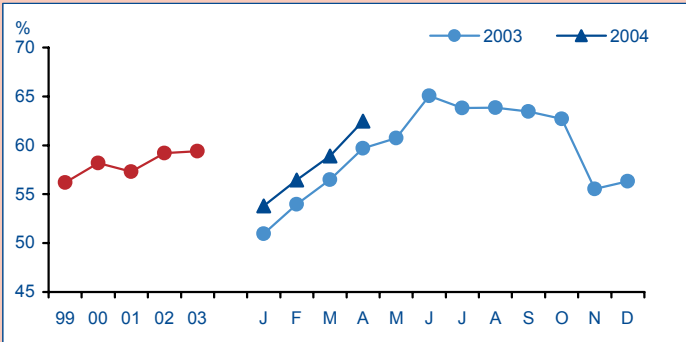
**ASK\* Growth**



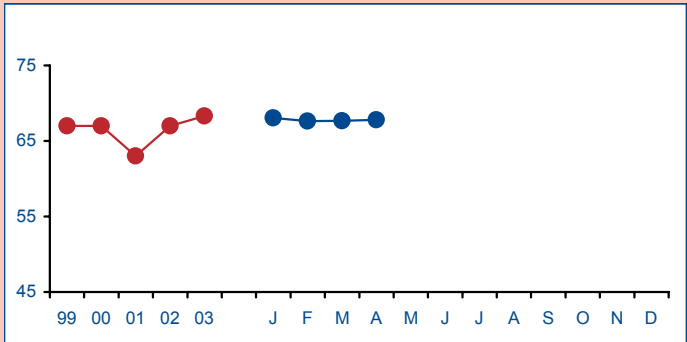
**Seats' Growth**



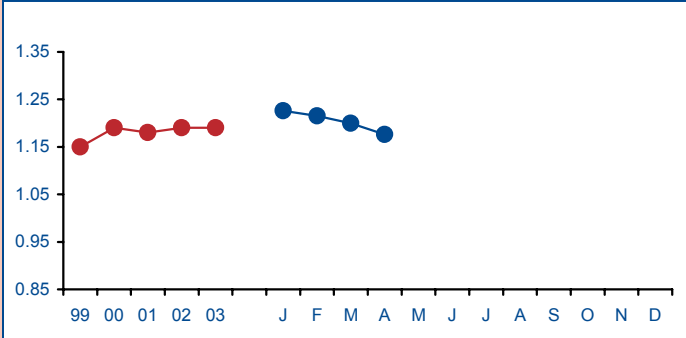
**Passenger Load Factor**



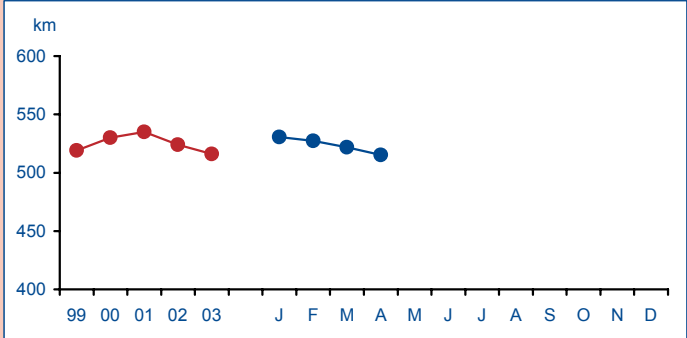
**Aircraft Seating Capacity**



**Sector Time**



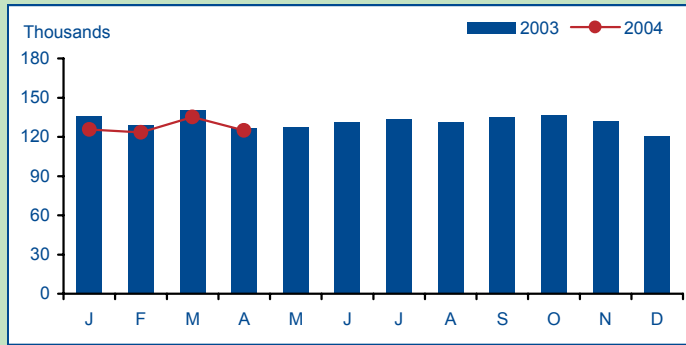
**Sector Distance**



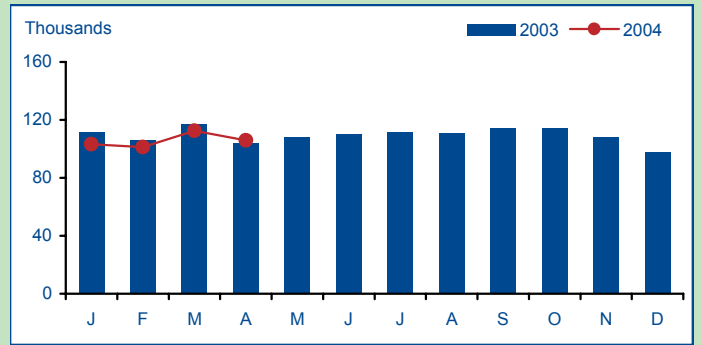
\* RPK = Revenue Passenger Kilometre \*ASK = Available Seat Kilometre

# UTILISATION - January to April 2004

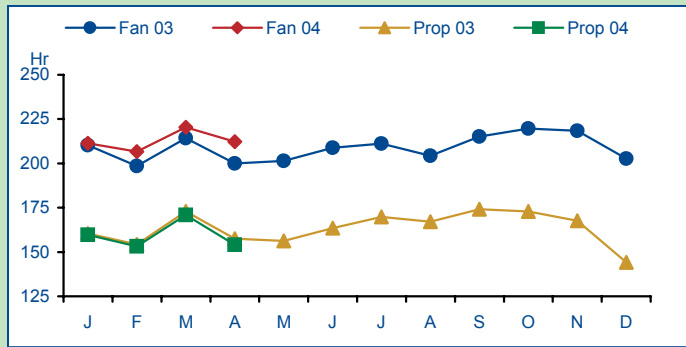
## Total Hours



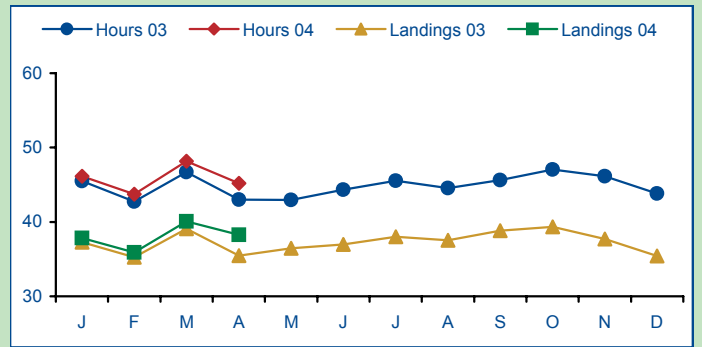
## Total Landings



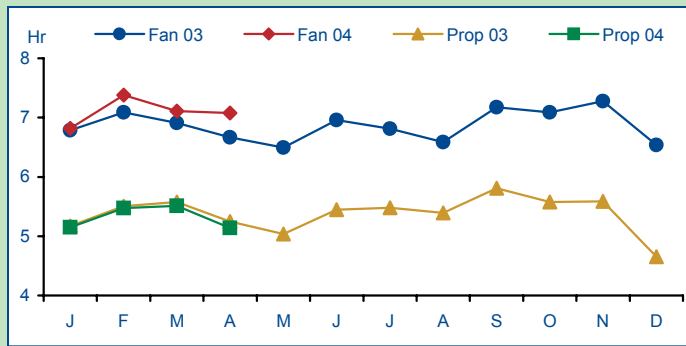
## Hours Flown Per Month



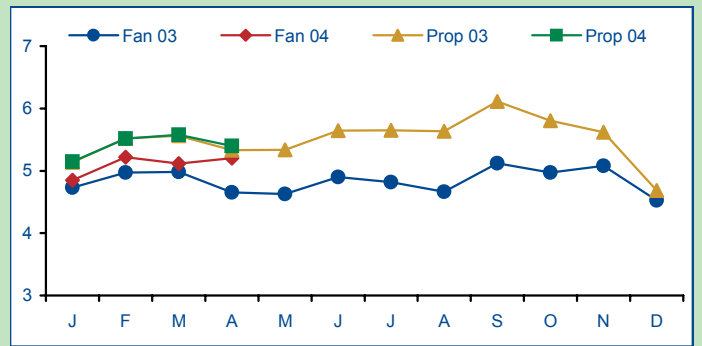
## Flight Crew Hours and Landings



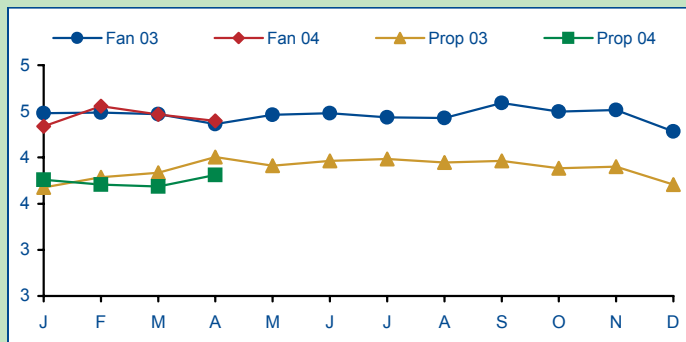
## Hours Per Aircraft per Day



## Flights Per Aircraft per Day



## Flight Crew Members Per Aircraft

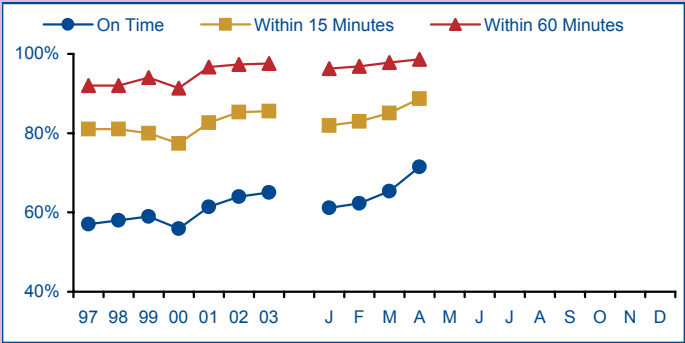


# DEPARTURE PUNCTUALITY - January to April 2004

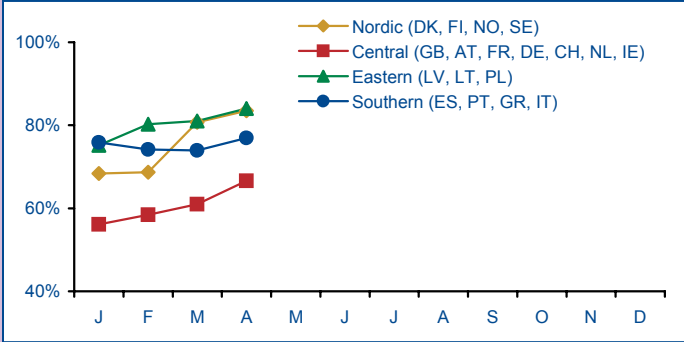
## Summary

	2004	2003
On Time	65%	65%
Within 15 Minutes	85%	85%
Within 60 Minutes	97%	98%
% Flights Operated	97.7%	97.4%
% Flights Delayed	34.9%	34.5%

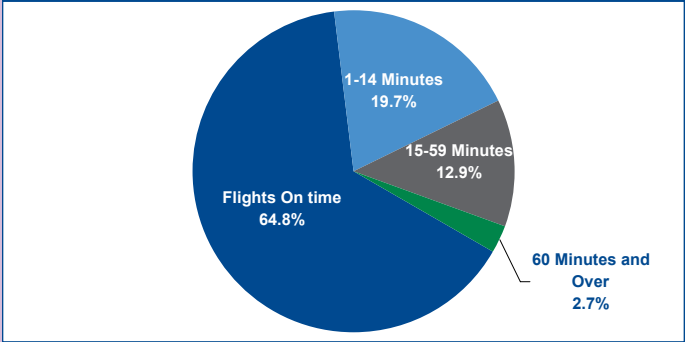
## Overall Performance



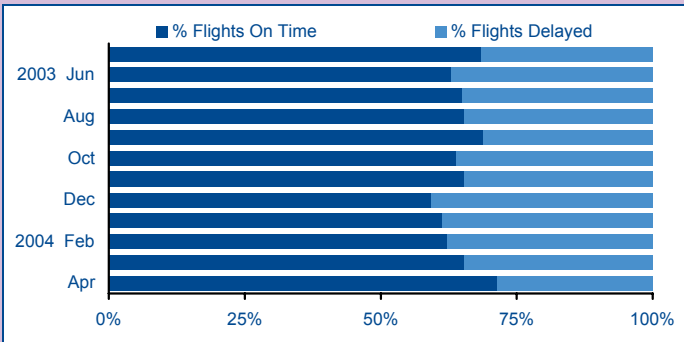
## On Time by Region - 2004



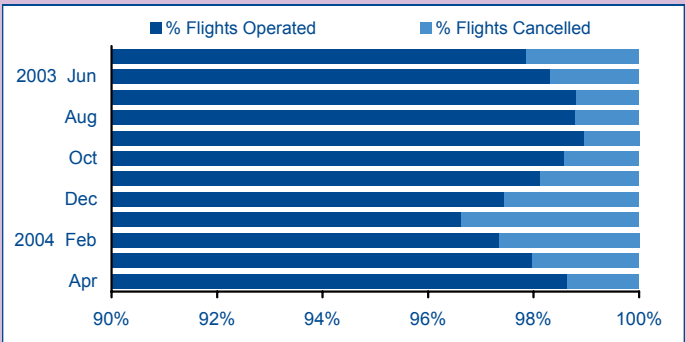
## Departure Punctuality



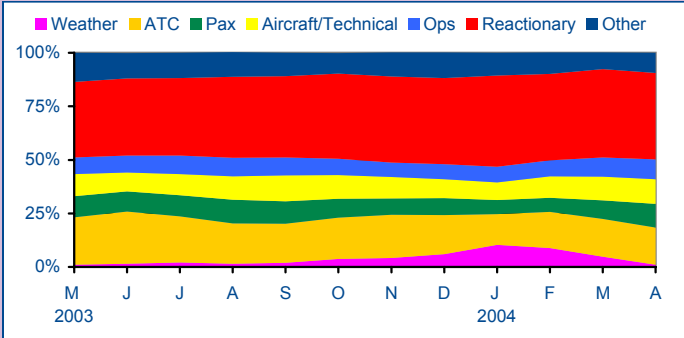
## On Time/Delayed



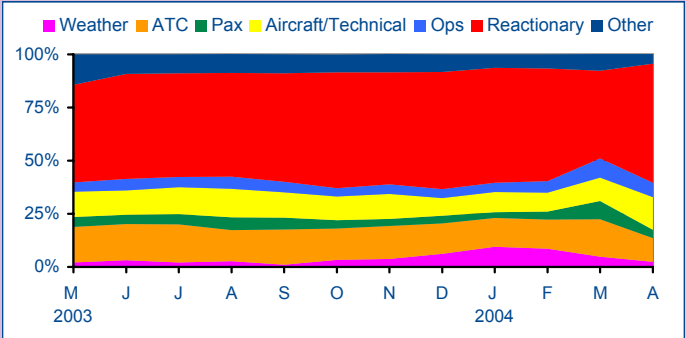
## Operated/Cancelled



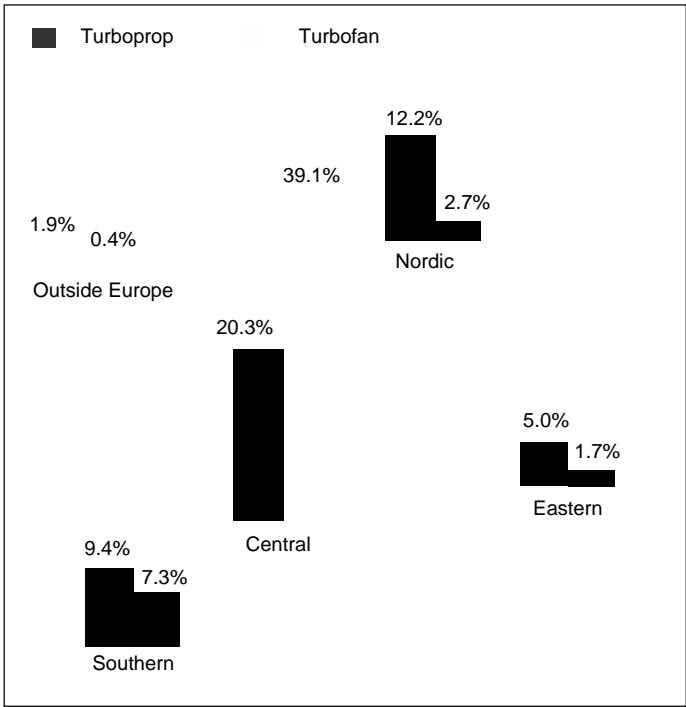
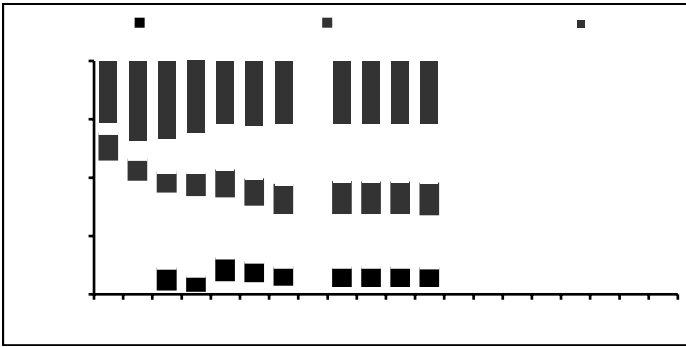
## Delay Reasons - Within 15 Minutes



## Delay Reasons - Within 60 Minutes



	Passenger	Freight
No of Aircraft	1089	42
No of Turboprops	516	36
No of Turbofans	573	6
Average Fleet Age (yr)	9.1	22.6
Average Turboprop Age (yr)	10.4	22.8
Average Turbofan Age (yr)	7.8	21.8



The data in this publication are voluntarily supplied by ERA reporting airlines. The Directorate's thanks go to these airlines. To ensure true comparisons year on year, these statistics are based on figures provided by the same group of airlines for each of the periods being compared. Data for new members which have been in operation for more than a year are only included when the preceding year's data have been supplied. Unless otherwise indicated, comparisons given are for the same period of the previous year for reporting carriers only. On occasions it may be necessary to alter some graphs from previous issues retrospectively when additional carriers enter the system. Rounding the data may cause some distortion to graphs. Interpretation of graphs and charts is undertaken by the Directorate staff and does not necessarily reflect the views of individual members.

The source must be acknowledged in reproduction of any part of the document.

\*Source: Airclaims

bo^=`lkq^`q

Lorna Ana Casals  
 Controller Industry Analysis

If ERA airline members wish to contribute statistical data please contact the Directorate at the address opposite.

The Baker Suite, Fairoaks Airport, Chobham  
 Woking, Surrey, GU24 8HX  
 United Kingdom  
 Tel: +44 (0) 1276 485579  
 Fax: +44 (0) 1276 859485  
 Website: [www.eraa.org](http://www.eraa.org)  
 E-mail: [lorna.casals@eraa.org](mailto:lorna.casals@eraa.org)  
 SITA: LHRZZXH