

ERA AIRLINE MONTHLY STATISTICS

Following are the interim results received so far from ERA reporting carriers for January to February 2004.

These figures reflect the provisional results of the 35 ERA member airlines which currently report data on a monthly basis.

Please note that these figures are subject to change, since data may have to be revised retrospectively when carriers are added or deleted. The final version will be published quarterly on the website with a summary of the key indicators reproduced in Regional International.

Any airline member wishing to contribute data should contact Lorna Ana Casals (lorna.casals@eraa.org) for more information.

SCHEDULED KEY INDICATORS - 2004 v 2003

January to February Growth

Passengers	2.7%
Passenger km	1.5%
Seats	-0.8%
Seat km	-1.9%
Hours	-5.3%
Landings	-5.9%
Passenger Load Factor	55.1%
Sector Distance km	529
Sector Time hr.min	1.13
Aircraft Seating Capacity	68

February Growth

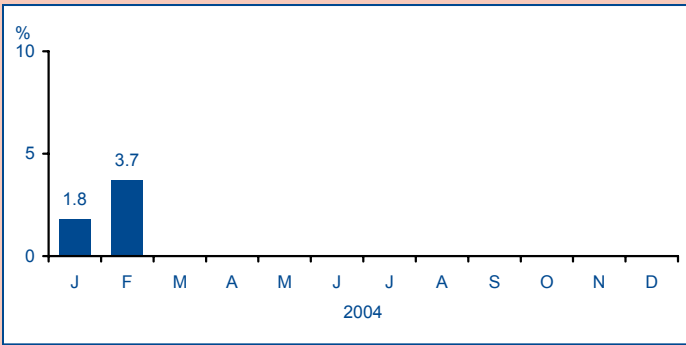
Passengers	3.7%
Passenger km	2.0%
Seats	0.6%
Seat km	-0.6%
Hours	-3.6%
Landings	-4.5%
Passenger Load Factor	56.4%
Sector Distance km	527
Sector Time hr.min	1.13
Aircraft Seating Capacity	68

The data in this publication are voluntarily supplied by ERA reporting airlines. The Directorate's thanks go to these airlines. To ensure true comparisons year on year, these statistics are based on figures provided by the same group of airlines for each of the periods being compared. Data for new members which have been in operation for more than a year are only included when the preceding year's data have been supplied. Unless otherwise indicated, comparisons given are for the same period of the previous year for reporting carriers only. On occasions it may be necessary to alter some graphs from previous issues retrospectively when additional carriers enter the system. Rounding the data may cause some distortion to graphs. Interpretation of graphs and charts is undertaken by the Directorate staff and does not necessarily reflect the views of individual members.

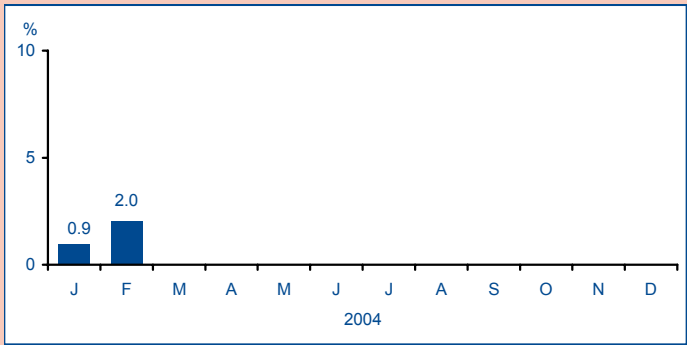
The source must be acknowledged in reproduction of any part of the document.

SCHEDULED PERFORMANCE - January to February 2004

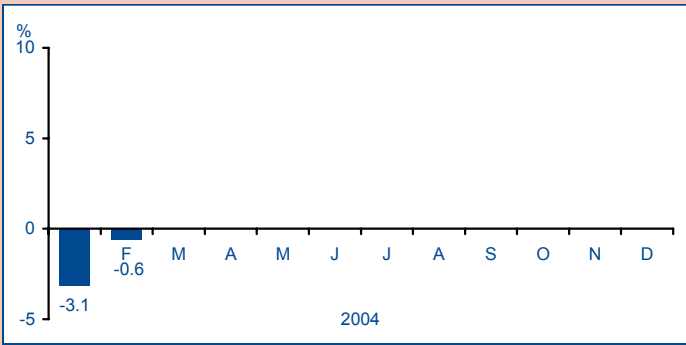
Passenger Growth



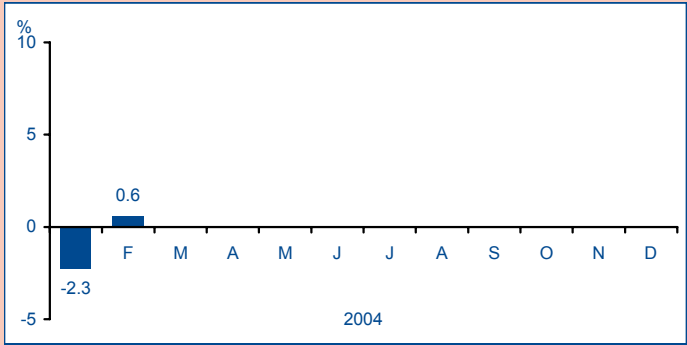
RPK* Growth



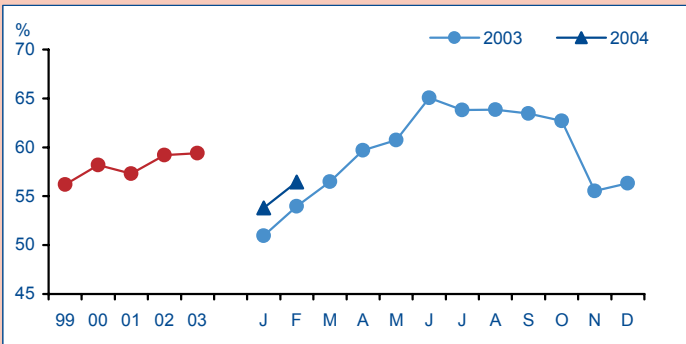
ASK* Growth



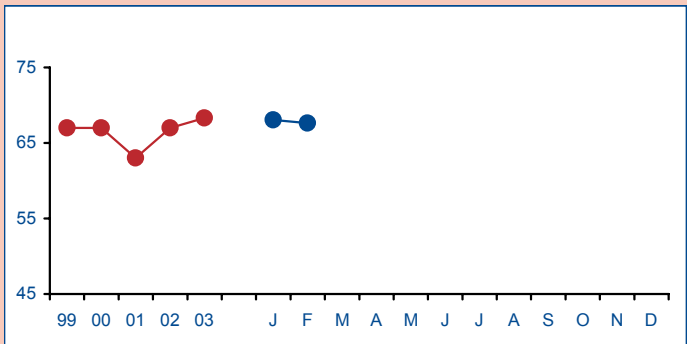
Seats' Growth



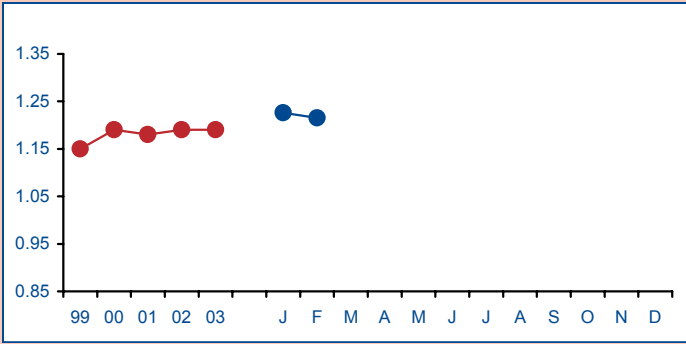
Passenger Load Factor



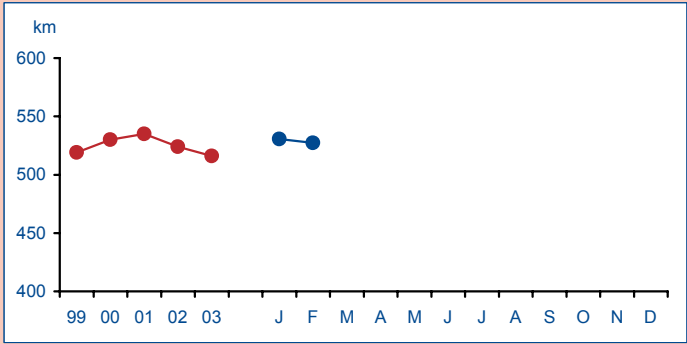
Aircraft Seating Capacity



Sector Time



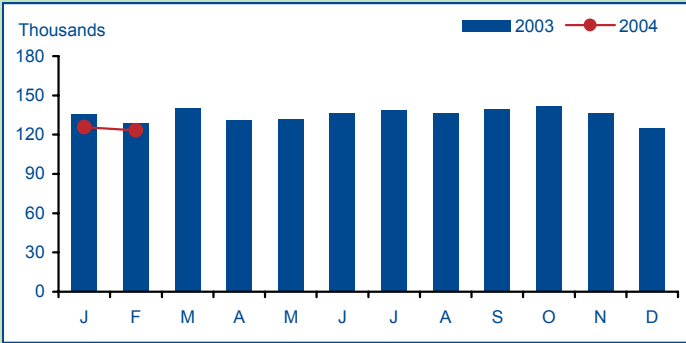
Sector Distance



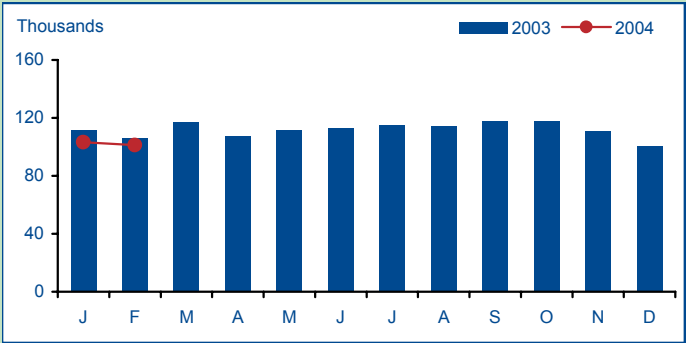
* RPK = Revenue Passenger Kilometre *ASK = Available Seat Kilometre

UTILISATION - January to February 2004

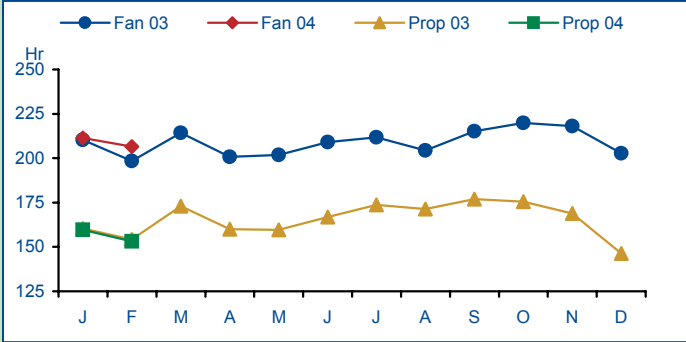
Total Hours



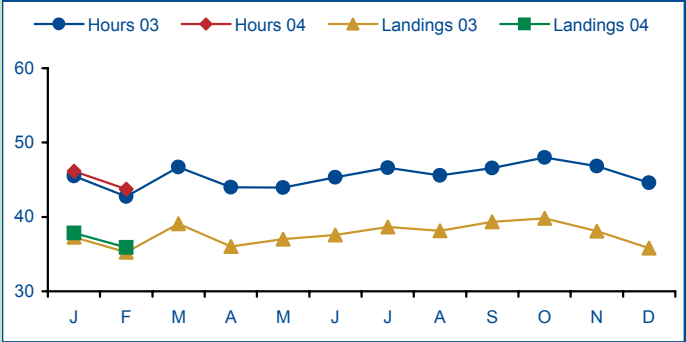
Total Landings



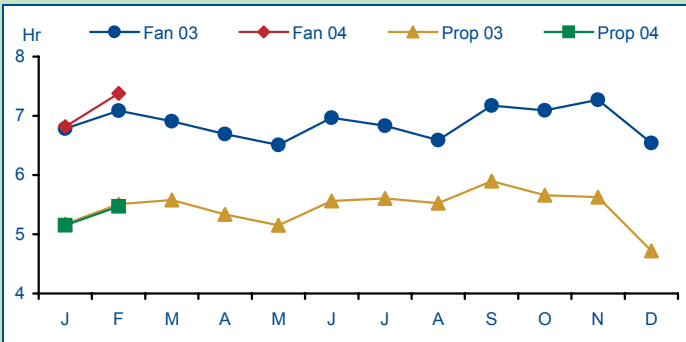
Hours Flown Per Month



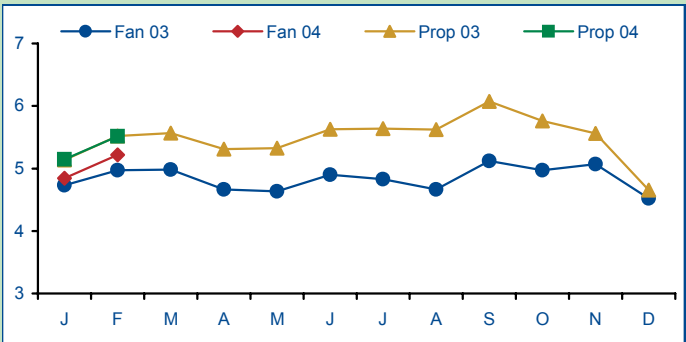
Flight Crew Hours and Landings



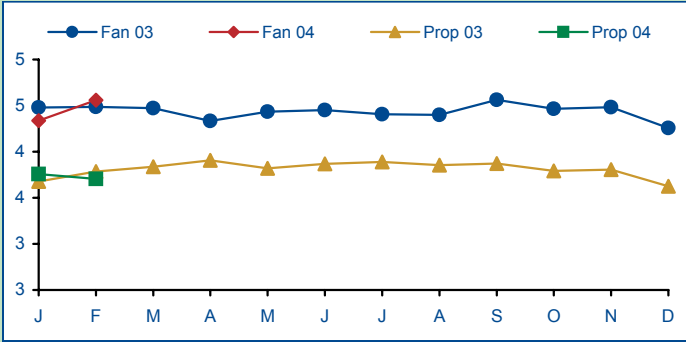
Hours Per Aircraft per Day



Flights Per Aircraft per Day



Flight Crew Members Per Aircraft

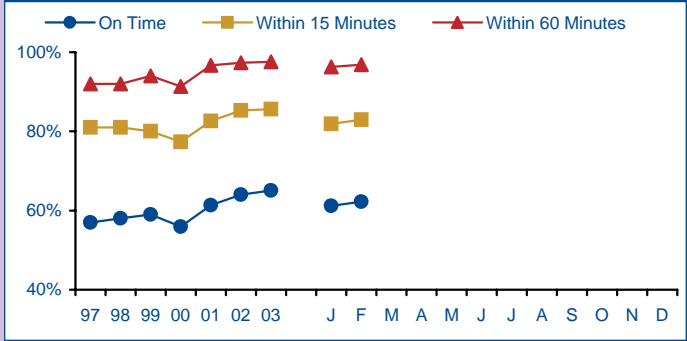


DEPARTURE PUNCTUALITY - January to February 2004

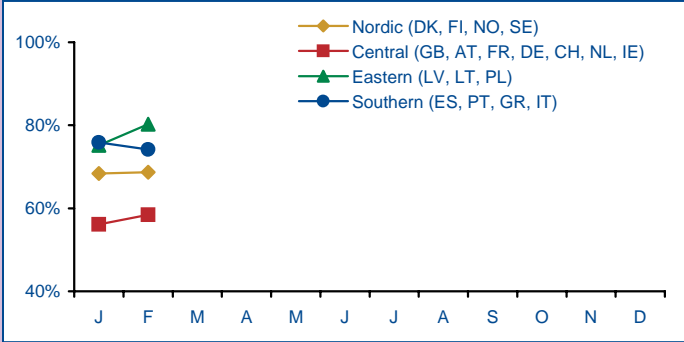
Summary

	2004	2003
On Time	62%	63%
Within 15 Minutes	82%	83%
Within 60 Minutes	97%	97%
% Flights Operated	97.0%	97.2%
% Flights Delayed	38.3%	37.0%

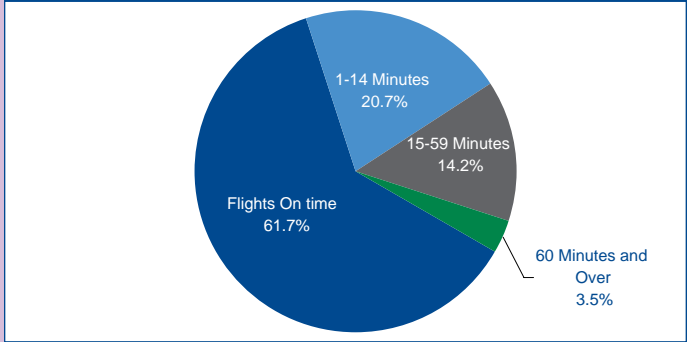
Overall Performance



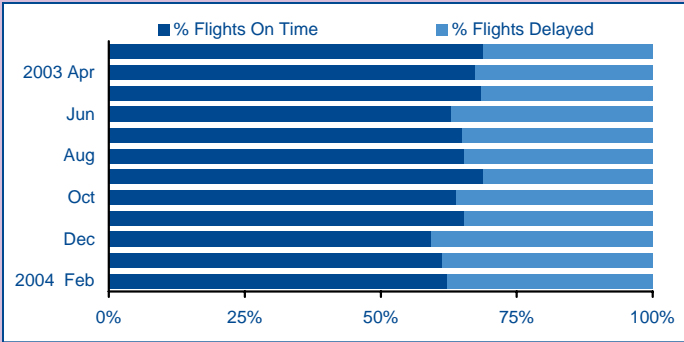
On Time by Region - 2004



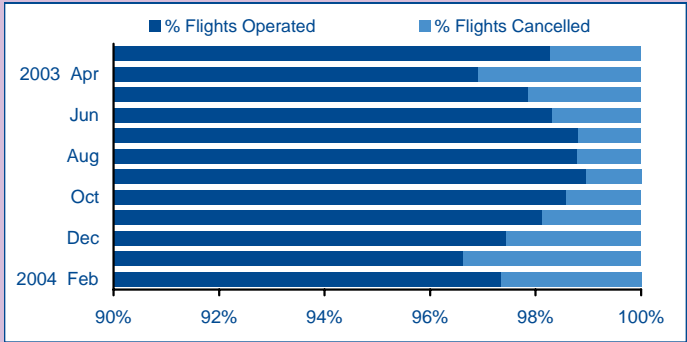
Departure Punctuality - January to February 2004



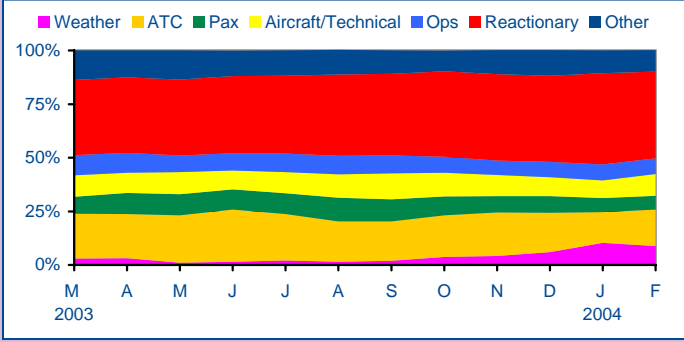
On Time/Delayed



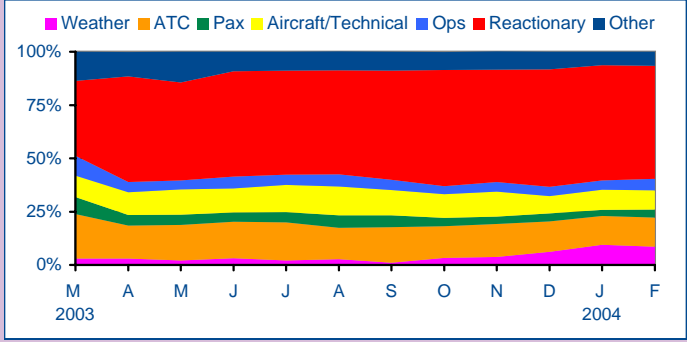
Operated/Cancelled



Delay Reasons - Within 15 Minutes

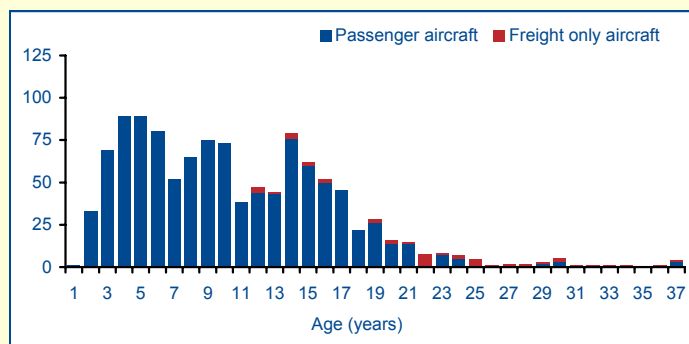


Delay Reasons - Within 60 Minutes



Fleet - Entire ERA Membership - February 2004

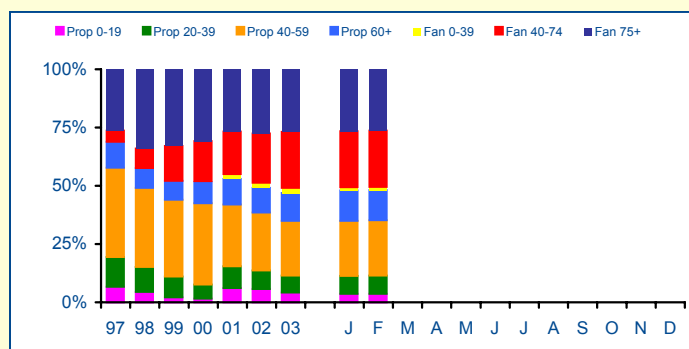
Fleet Age*



Summary*

	Passenger	Freight
No of Aircraft	1082	44
No of Turboprops	520	38
No of Turbofans	562	6
Average Fleet Age (yr)	9.2	22.3
Average Turboprop Age (yr)	10.6	22.4
Average Turbofan Age (yr)	7.8	21.8

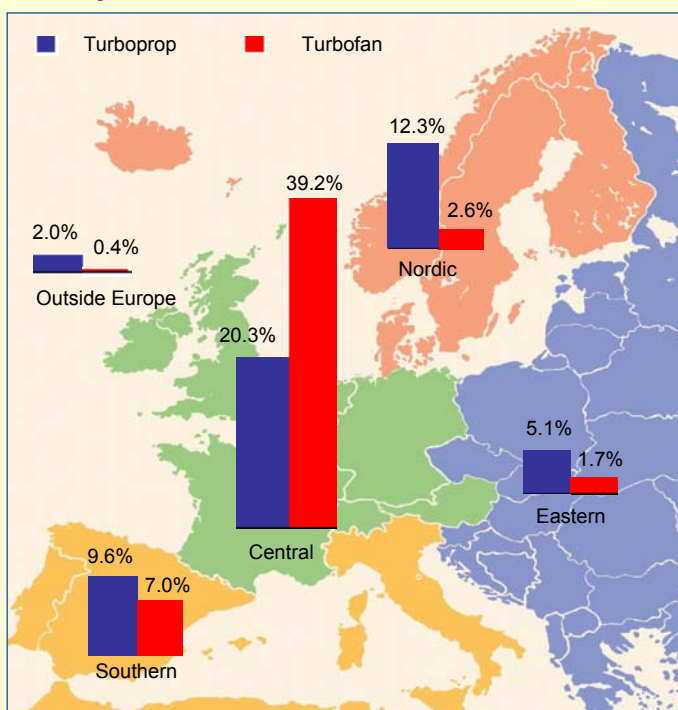
Fleet Share*



The data in this publication are voluntarily supplied by ERA reporting airlines. The Directorate's thanks go to these airlines. To ensure true comparisons year on year, these statistics are based on figures provided by the same group of airlines for each of the periods being compared. Data for new members which have been in operation for more than a year are only included when the preceding year's data have been supplied. Unless otherwise indicated, comparisons given are for the same period of the previous year for reporting carriers only. On occasions it may be necessary to alter some graphs from previous issues retrospectively when additional carriers enter the system. Rounding the data may cause some distortion to graphs. Interpretation of graphs and charts is undertaken by the Directorate staff and does not necessarily reflect the views of individual members.

The source must be acknowledged in reproduction of any part of the document.

Fleet by Area*



*Source: Airclaims

ERA Contact

Lorna Ana Casals
 Controller Industry Analysis

If ERA airline members wish to contribute statistical data please contact the Directorate at the address opposite.

The Baker Suite, Fair Oaks Airport, Chobham
 Woking, Surrey, GU24 8HX
 United Kingdom
 Tel: +44 (0) 1276 485579
 Fax: +44 (0) 1276 859485
 Website: www.eraa.org
 E-mail: lorna.casals@eraa.org
 SIT: LHRZZXH