



# ERA MONTHLY STATISTICS

January 2003

Issue 1

Following are the interim results received so far from ERA reporting carriers for January 2003.

These figures reflect the provisional results of the 41 ERA member airlines which currently report data on a monthly basis.

Please note that these figures are subject to change, since data may have to be revised retrospectively when carriers are added or deleted. The final version will be published quarterly in Regional International.

Any airline member wishing to contribute data should contact Lorna Ana Casals ([lorna.casals@eraa.org](mailto:lorna.casals@eraa.org)) for more information.

## Scheduled Key Indicators - 2003 v 2002

January Growth	
Passengers	9.3%
Passenger km	10.3%
Seats	6.4%
Seat km	7.1%
Hours	3.8%
Landings	2.3%
Passenger Load Factor	50.7%
Sector Distance km	520
Sector Time hr.min	1.13
Aircraft Seating Capacity	67

The data in this publication are voluntarily supplied by ERA reporting airlines. The Directorate's thanks go to these airlines. To ensure true comparisons year on year, these statistics are based on figures provided by the same group of airlines for each of the periods being compared. Data for new members which have been in operation for more than a year are only included when the preceding year's data have been supplied. Unless otherwise indicated, comparisons given are for the same period of the previous year for reporting carriers only. On occasions it may be necessary to alter some graphs from previous issues retrospectively when additional carriers enter the system. Rounding the data may cause some distortion to graphs. Interpretation of graphs and charts is undertaken by the Directorate staff and does not necessarily reflect the views of individual members.

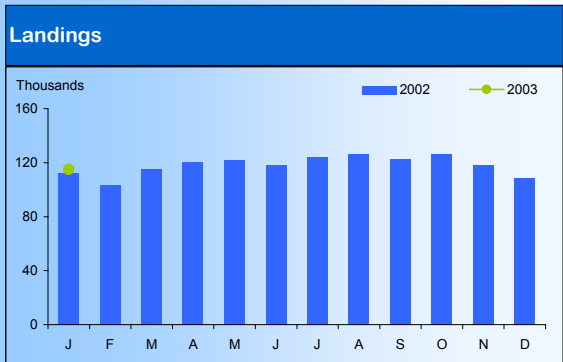
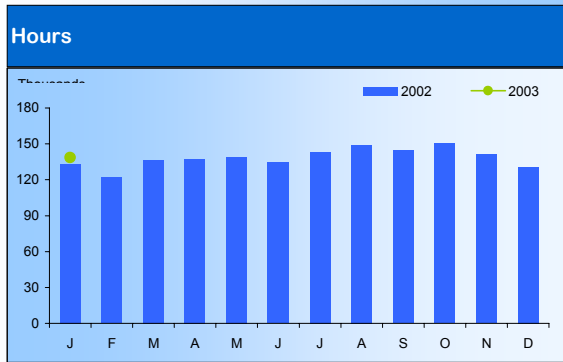
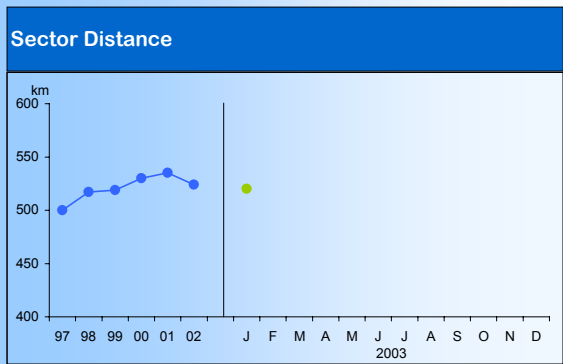
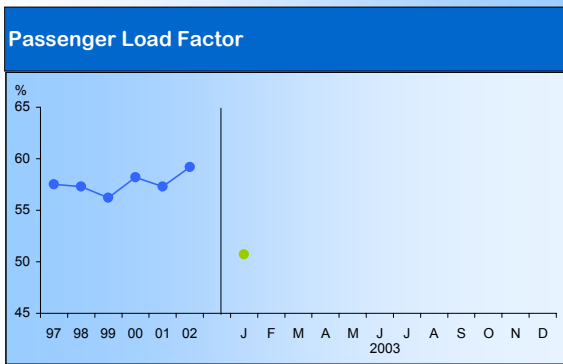
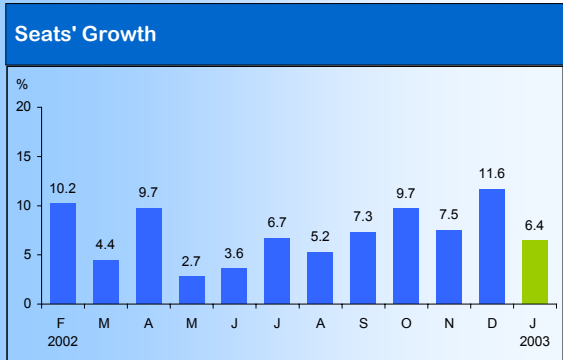
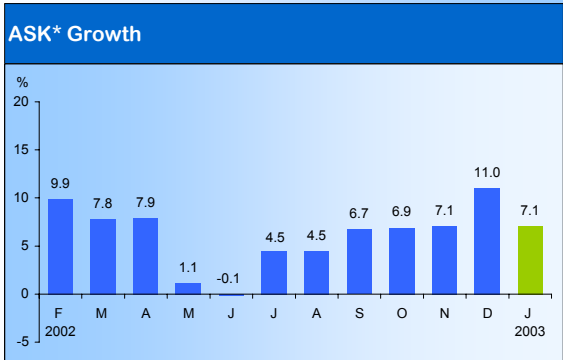
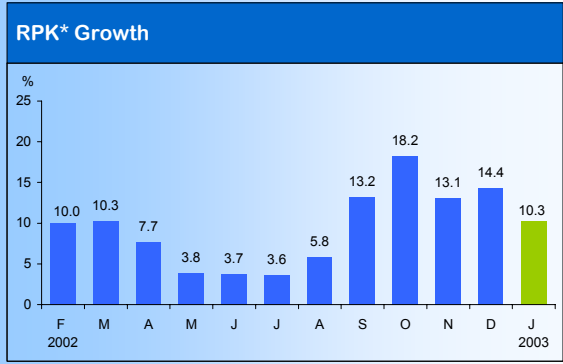
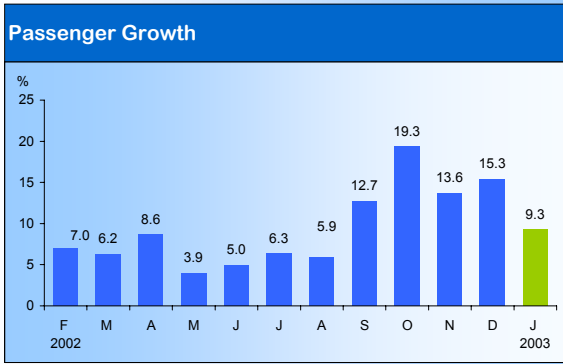
The source must be acknowledged in reproduction of any part of the document.

# Individual Carrier Performance

January 2003

Scheduled Operations	Pax (000)		Pax	Pax km (mil)		Pax km	Seat km (mil)		Seat km	Pax Load Factor	
	2003	2002	Growth (%)	2003	2002	Growth (%)	2003	2002	Growth (%)	2003(%)	2002 (%)
Aegean Airlines	151.4	129.4	17.0	86.0	74.5	15.3	136.2	134.6	1.2	63.1	55.4
Air Botnia	38.1	35.8	6.3	24.4	21.6	13.1	68.4	54.2	26.3	35.7	39.8
Air Dolomiti	69.6	62.9	10.8	46.8	40.6	15.2	95.0	86.4	10.0	49.2	47.0
Air Lithuania	2.9	3.3	-11.7	2.7	3.1	-11.5	6.3	6.3	1.1	42.8	48.9
Air Nostrum	238.9	213.9	11.6	120.2	102.2	17.6	237.7	197.5	20.3	50.6	51.7
airBaltic	18.2	16.4	11.0	12.2	10.3	18.2	23.2	21.4	8.6	52.4	48.2
Arkia Israeli Airlines	49.5	67.0	-26.0	14.1	19.1	-26.1	29.2	36.0	-18.8	48.3	53.1
ATA Aerocondor	8.6	9.4	-8.8	1.8	6.0	-70.3	2.4	7.4	-67.2	72.7	80.2
Augsburg Airways	57.2	39.7	43.9	32.1	20.9	53.7	63.7	58.9	8.1	50.5	35.5
Binter Canarias	160.6	156.9	2.4	27.3	26.6	2.6	41.6	37.2	11.9	65.5	71.5
Brit Air (+ Air France)	204.5	201.8	1.3	137.5	137.7	-0.2	270.4	259.3	4.3	50.8	53.1
Cimber Air	51.0	45.4	12.3	12.3	12.1	2.2	25.6	23.4	9.2	48.2	51.5
dba	200.4	182.4	9.9	101.0	99.6	1.4	211.6	220.9	-4.2	47.7	45.1
EuroLOT	58.0	48.7	19.3	19.6	15.7	24.9	39.3	39.3	-0.1	50.0	40.0
Eurowings	234.4	186.3	25.8	102.1	76.7	33.1	193.3	164.5	17.5	52.8	46.6
flybe	180.9	169.4	6.8	74.7	76.7	-2.6	138.3	141.8	-2.5	54.0	54.1
KLM Cityhopper	201.0	175.4	14.6	107.0	96.6	10.7	170.8	156.6	9.0	62.6	61.7
KLMexel	-	20.6	-	-	6.5	-	-	13.3	-	-	49.0
Lithuanian Airlines	17.0	17.1	-0.8	20.8	20.9	-0.4	51.5	50.2	2.5	40.5	41.7
Lufthansa CityLine	451.5	402.4	12.2	273.6	251.4	8.8	512.4	466.2	9.9	53.4	53.9
Malmö Aviation AB	78.5	63.3	23.9	36.9	25.7	43.3	74.0	55.5	33.4	49.8	46.4
PGA Portugalía	56.1	65.2	-14.1	48.1	52.5	-8.3	105.8	104.9	0.8	45.5	50.0
Régional	212.0	207.3	2.2	110.3	104.3	5.8	214.6	217.8	-1.5	51.4	47.9
Royal Wings	6.2	3.0	104.6	1.4	0.5	167.9	3.6	1.6	129.9	39.4	33.8
SATA Air Açores	21.7	21.8	-0.6	3.7	4.2	-13.2	6.7	7.2	-6.7	54.6	58.7
Skyways	97.0	80.7	20.1	37.8	30.3	24.8	81.0	64.4	25.9	46.7	47.1
Swiss (Regional Ops)	346.2	338.9	2.1	229.8	224.6	2.3	534.1	534.6	-0.1	43.0	42.0
Tyrolean Airways	184.9	163.8	12.9	113.0	85.8	31.7	216.3	170.8	26.7	52.2	50.2
Widerøe	119.6	111.9	6.9	34.5	29.4	17.4	78.8	67.1	17.3	43.8	43.7
<b>Charter Operations</b>											
Air Jet	-	1.5	-	-	0.05	-	-	0.1	-	-	59.5
Newair	9.5	4.0	138.6	-	-	-	-	-	-	-	-

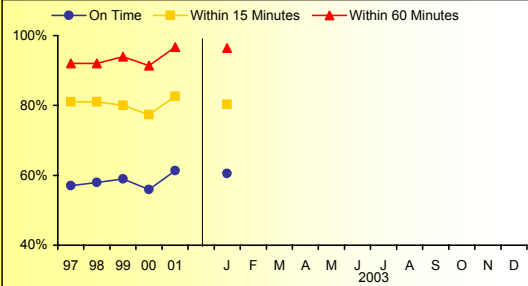
# Scheduled Performance



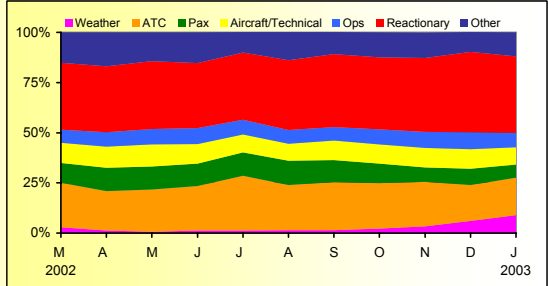
\* RPK = Revenue Passenger Kilometre    \* ASK = Available Seat Kilometre

# Punctuality

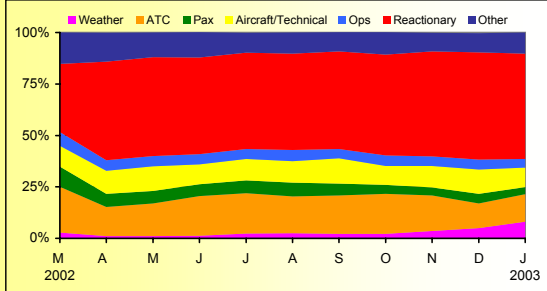
## Overall Performance



## Delay Reasons - Within 15 minutes

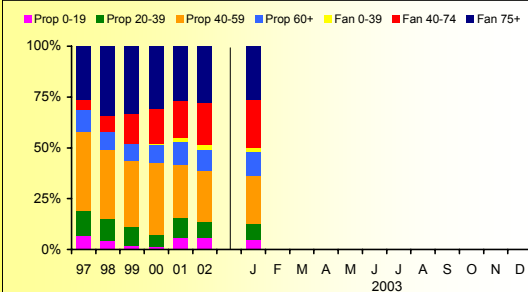


## Delay Reasons - Within 60 Minutes



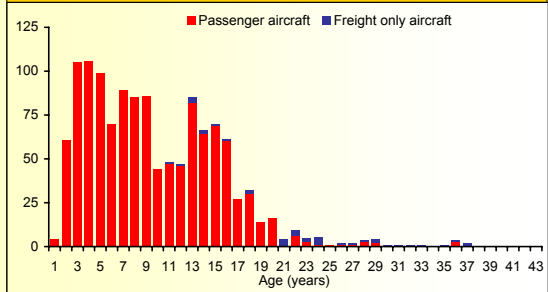
# Fleet - Entire ERA Membership - January 2003

## Fleet Share\*



\*Source: Airclaims

## Fleet Age\*



# ERA Contact

Lorna Ana Casals  
Controller Industry Analysis

If ERA airline members wish to contribute statistical data please contact the Directorate at the address opposite.

The Baker Suite, Fair Oaks Airport, Chobham  
Woking, Surrey, GU24 8HX  
United Kingdom  
Tel: +44 (0) 1276 485579  
Fax: +44 (0) 1276 859485  
Website: [www.eraa.org](http://www.eraa.org)  
E-mail: [lorna.casals@eraa.org](mailto:lorna.casals@eraa.org)  
SITA: LHRZZXH