

## ERA AIRLINE MONTHLY STATISTICS

Following are the interim results received so far from ERA reporting carriers for January to March 2004.

These figures reflect the provisional results of the 35 ERA member airlines which currently report data on a monthly basis.

Please note that these figures are subject to change, since data may have to be revised retrospectively when carriers are added or deleted. The final version will be published quarterly on the website with a summary of the key indicators reproduced in Regional International.

Any airline member wishing to contribute data should contact Lorna Ana Casals ([lorna.casals@eraa.org](mailto:lorna.casals@eraa.org)) for more information.

### SCHEDULED KEY INDICATORS - 2004 v 2003

#### January to March Growth

Passengers	3.0%
Passenger km	1.4%
Seats	0.0%
Seat km	-1.6%
Hours	-4.4%
Landings	-5.2%
Passenger Load Factor	59.4%
Sector Distance km	535
Sector Time hr.min	1.12
Aircraft Seating Capacity	68

#### March Growth

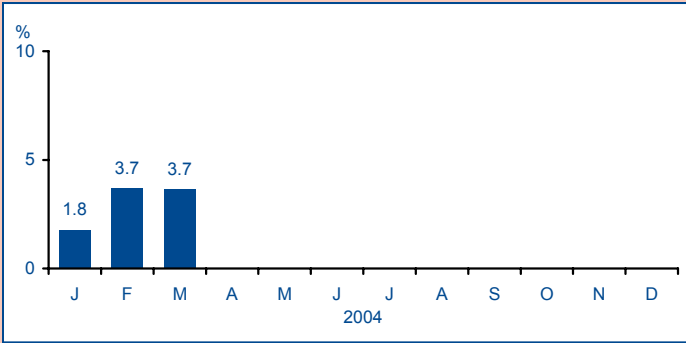
Passengers	3.7%
Passenger km	1.2%
Seats	1.6%
Seat km	-1.2%
Hours	-2.6%
Landings	-3.7%
Passenger Load Factor	58.9%
Sector Distance km	522
Sector Time hr.min	1.12
Aircraft Seating Capacity	68

The data in this publication are voluntarily supplied by ERA reporting airlines. The Directorate's thanks go to these airlines. To ensure true comparisons year on year, these statistics are based on figures provided by the same group of airlines for each of the periods being compared. Data for new members which have been in operation for more than a year are only included when the preceding year's data have been supplied. Unless otherwise indicated, comparisons given are for the same period of the previous year for reporting carriers only. On occasions it may be necessary to alter some graphs from previous issues retrospectively when additional carriers enter the system. Rounding the data may cause some distortion to graphs. Interpretation of graphs and charts is undertaken by the Directorate staff and does not necessarily reflect the views of individual members.

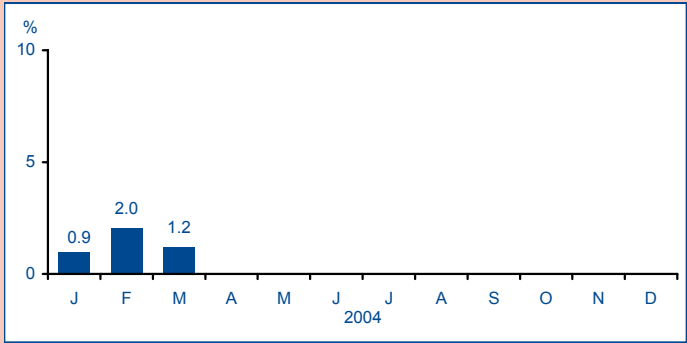
The source must be acknowledged in reproduction of any part of the document.

# SCHEDULED PERFORMANCE - January to March 2004

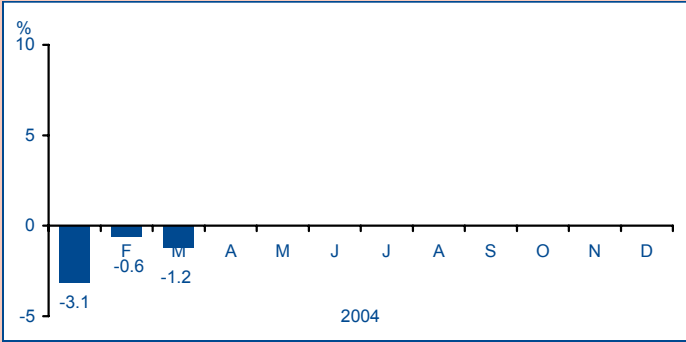
**Passenger Growth**



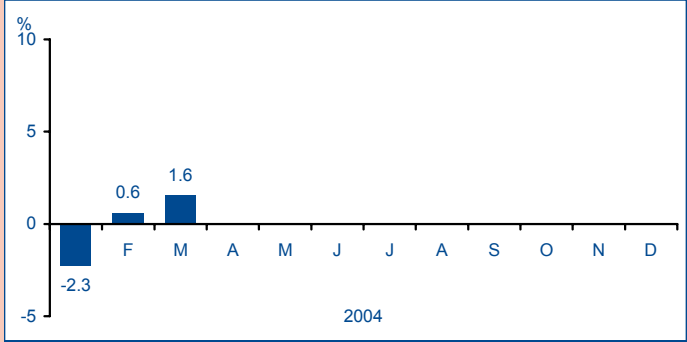
**RPK\* Growth**



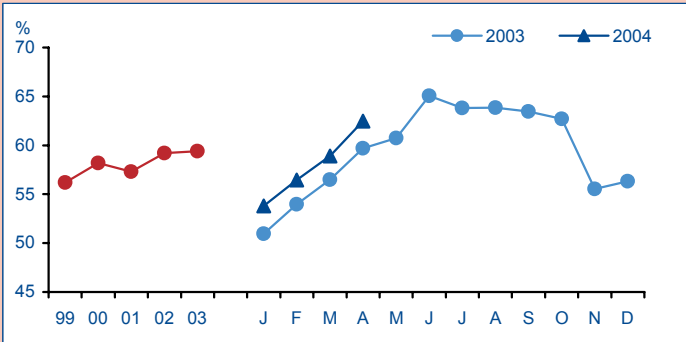
**ASK\* Growth**



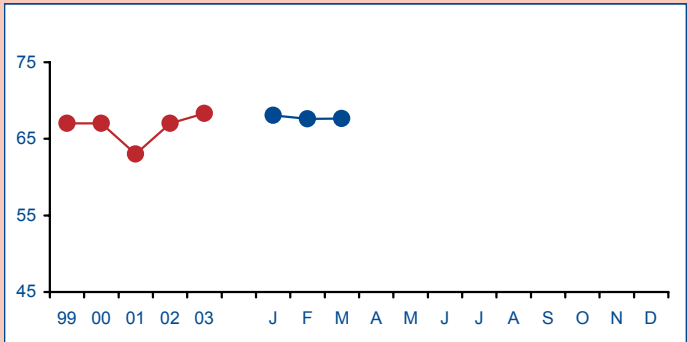
**Seats' Growth**



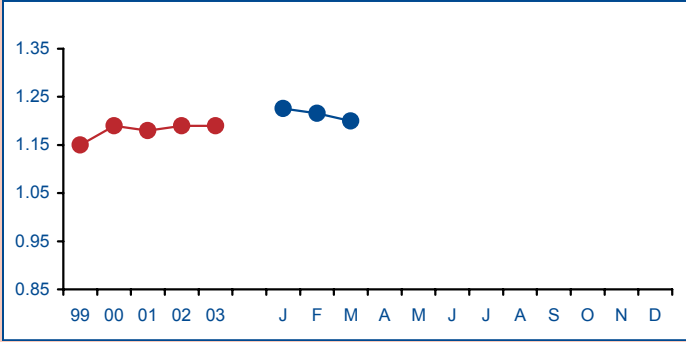
**Passenger Load Factor**



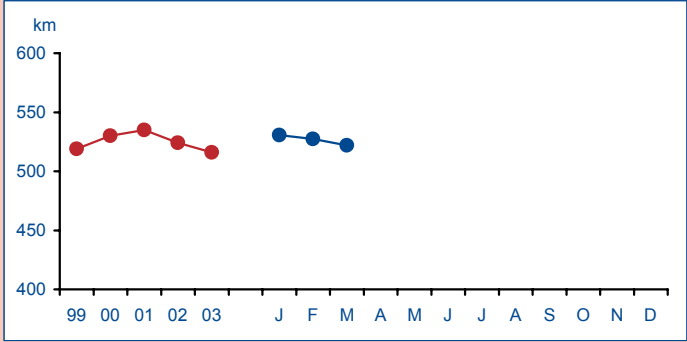
**Aircraft Seating Capacity**



**Sector Time**



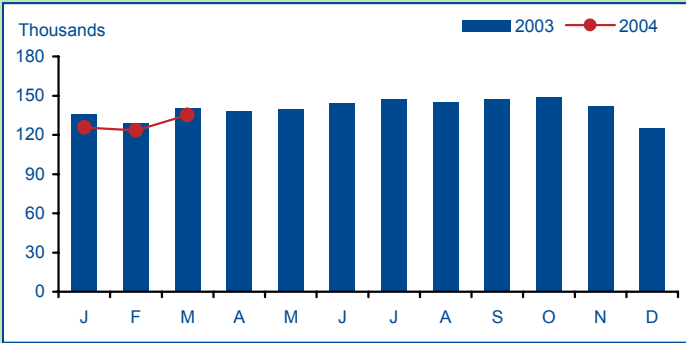
**Sector Distance**



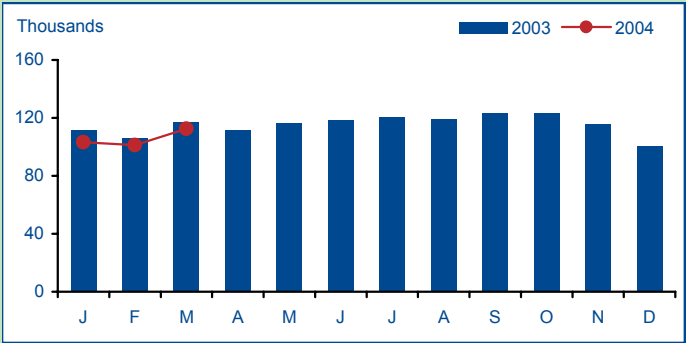
\* RPK = Revenue Passenger Kilometre \* ASK = Available Seat Kilometre

# UTILISATION - January to March 2004

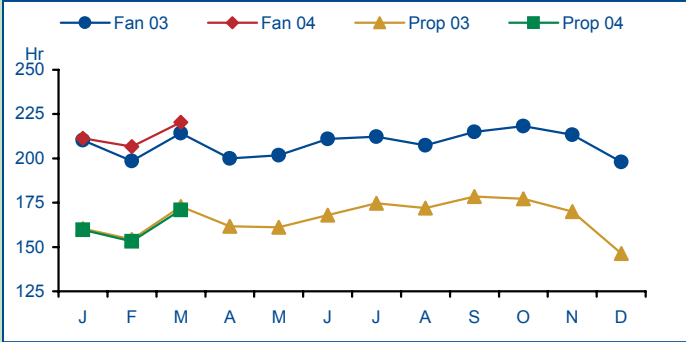
**Total Hours**



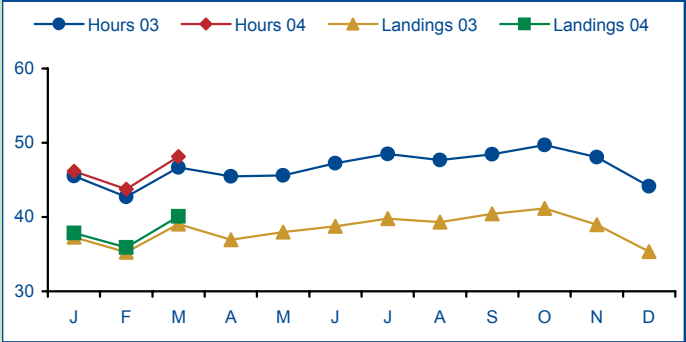
**Total Landings**



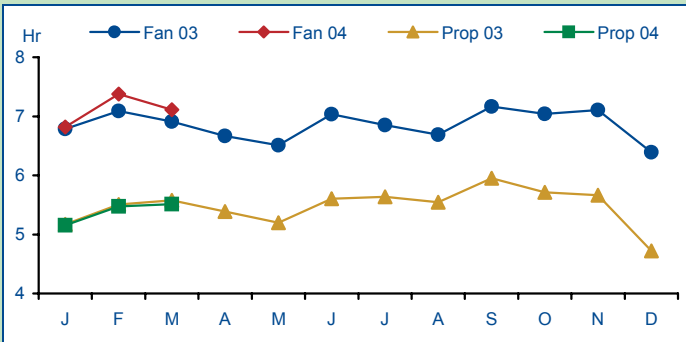
**Hours Flown Per Month**



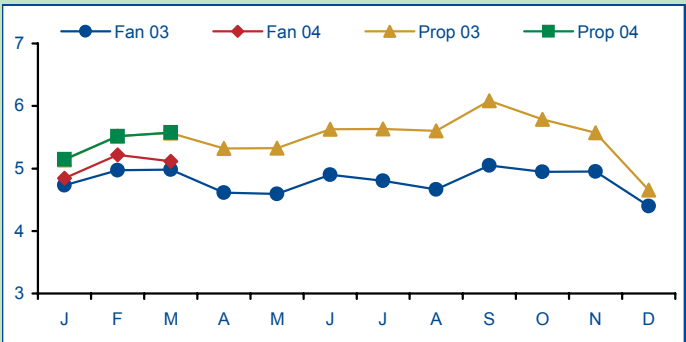
**Flight Crew Hours and Landings**



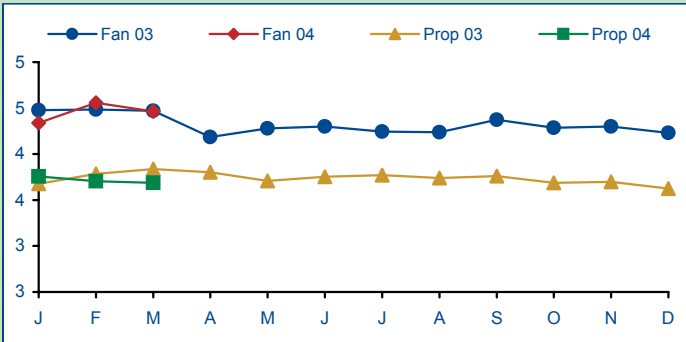
**Hours Per Aircraft per Day**



**Flights Per Aircraft per Day**



**Flight Crew Members Per Aircraft**

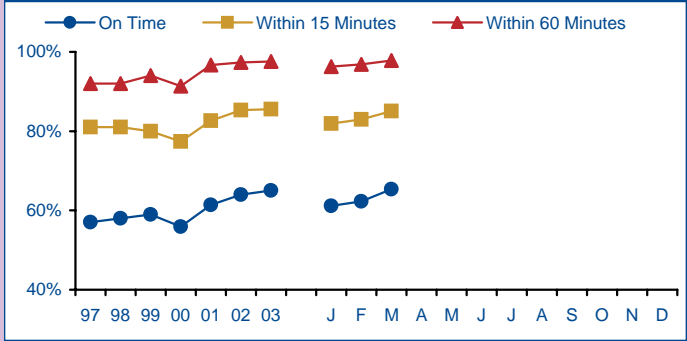


# DEPARTURE PUNCTUALITY - January to March 2004

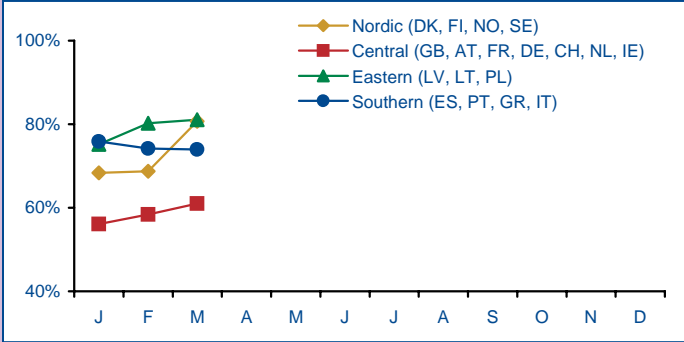
## Summary

	2004	2003
On Time	63%	65%
Within 15 Minutes	83%	84%
Within 60 Minutes	97%	97%
% Flights Operated	97.3%	97.6%
% Flights Delayed	37.1%	35.1%

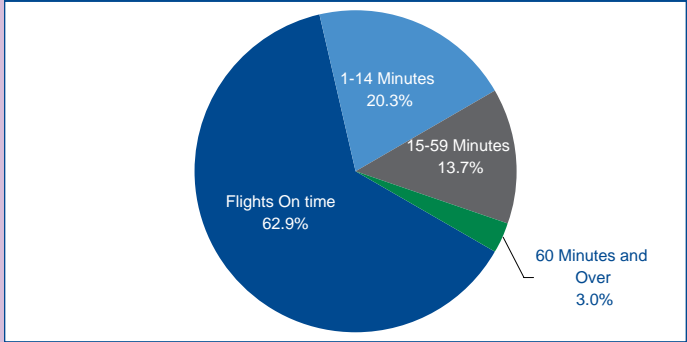
## Overall Performance



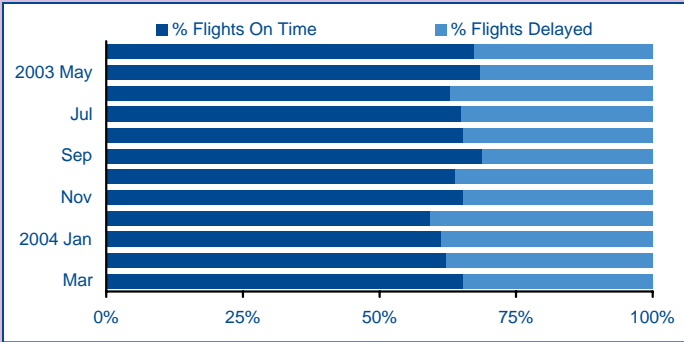
## On Time by Region - 2004



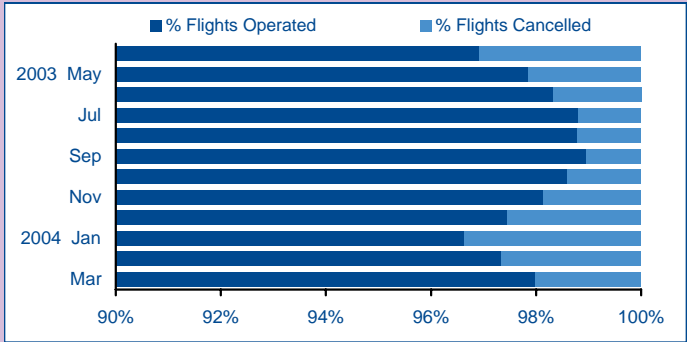
## Departure Punctuality - January to March 2004



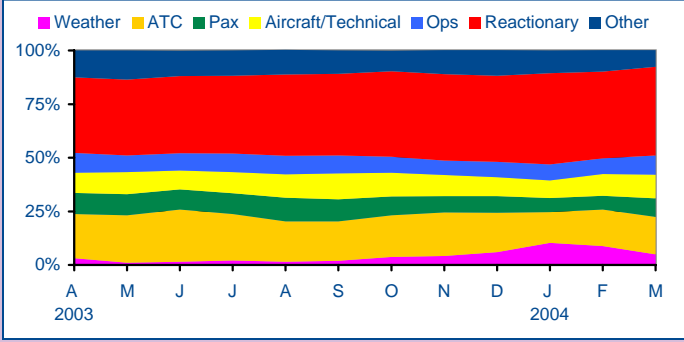
## On Time/Delayed



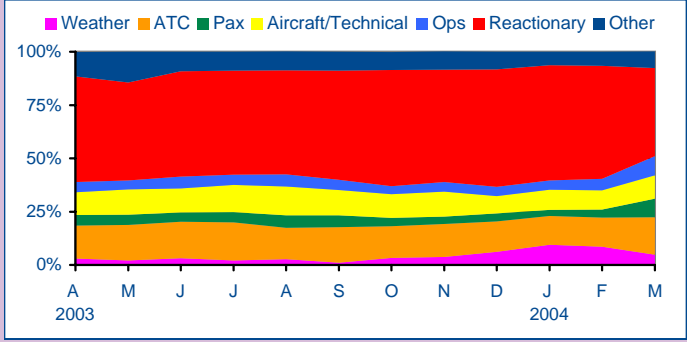
## Operated/Cancelled



## Delay Reasons - Within 15 Minutes

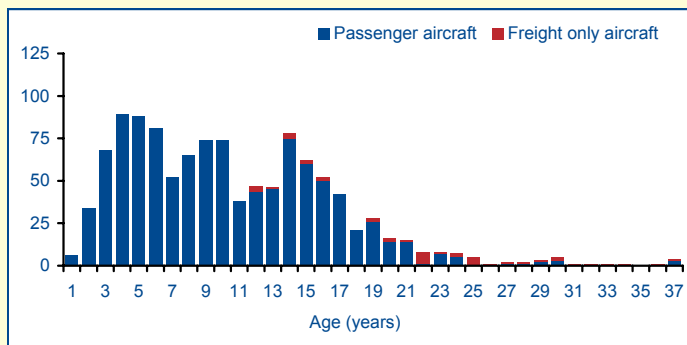


## Delay Reasons - Within 60 Minutes



## Fleet - Entire ERA Membership - March 2004

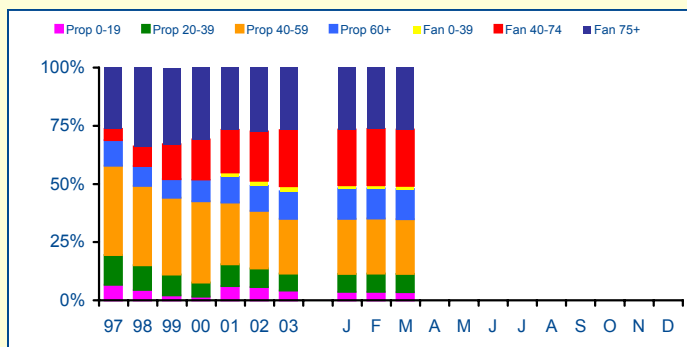
### Fleet Age\*



### Summary\*

	Passenger	Freight
No of Aircraft	1084	44
No of Turboprops	517	38
No of Turbofans	567	6
Average Fleet Age (yr)	9.1	22.3
Average Turboprop Age (yr)	10.5	22.4
Average Turbofan Age (yr)	7.8	21.8

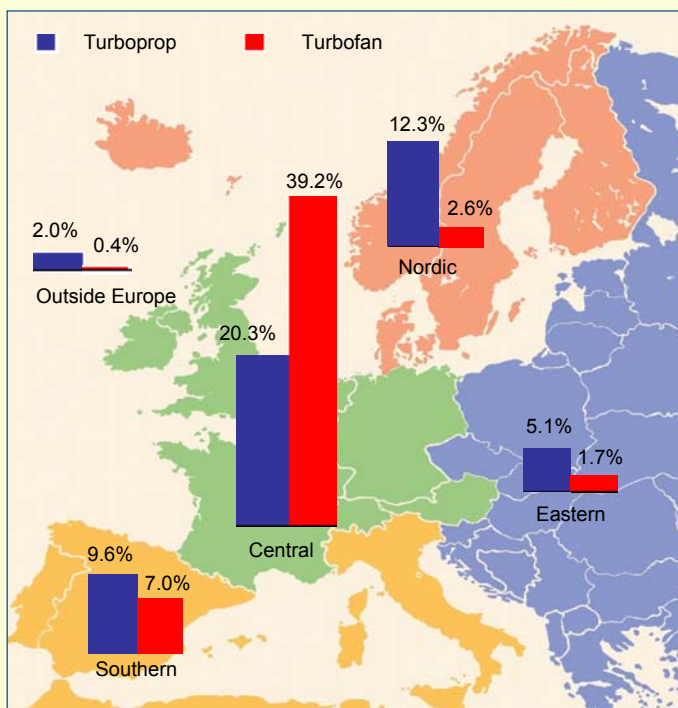
### Fleet Share\*



The data in this publication are voluntarily supplied by ERA reporting airlines. The Directorate's thanks go to these airlines. To ensure true comparisons year on year, these statistics are based on figures provided by the same group of airlines for each of the periods being compared. Data for new members which have been in operation for more than a year are only included when the preceding year's data have been supplied. Unless otherwise indicated, comparisons given are for the same period of the previous year for reporting carriers only. On occasions it may be necessary to alter some graphs from previous issues retrospectively when additional carriers enter the system. Rounding the data may cause some distortion to graphs. Interpretation of graphs and charts is undertaken by the Directorate staff and does not necessarily reflect the views of individual members.

The source must be acknowledged in reproduction of any part of the document.

### Fleet by Area\*



\*Source: Airclaims

## ERA Contact

**Lorna Ana Casals**  
 Controller Industry Analysis

If ERA airline members wish to contribute statistical data please contact the Directorate at the address opposite.

The Baker Suite, Fair Oaks Airport, Chobham  
 Woking, Surrey, GU24 8HX  
 United Kingdom  
 Tel: +44 (0) 1276 485579  
 Fax: +44 (0) 1276 859485  
 Website: [www.eraa.org](http://www.eraa.org)  
 E-mail: [lorna.casals@eraa.org](mailto:lorna.casals@eraa.org)  
 SIT: LHRZZXH