



ERA AIRPORT STATISTICS

This issue features the results for the ERA reporting airports for the period January to November 2007.

The charts and tables in this issue are comprised of data from 18 airport members who are members of the airport reporting scheme.

If you would like more information or have any comments on Airport Statistics or if your airport wishes to submit data please contact the Statistics Department of the ERA Directorate at statistics@eraa.org. Further statistics are available on the ERA website at www.eraa.org/fly-europe/statistics.php

KEY INDICATORS - 2007 v 2006

January to November Growth

| | |
|----------------------|-------|
| Passengers enplaned | 9.1% |
| Movements | 4.7% |
| Total Freight Tonnes | -1.2% |
| Employees | 4.1% |
| Operators | 3.3% |
| Routes | 5.4% |

November Growth

| | |
|----------------------|-------|
| Passengers enplaned | 8.7% |
| Movements | 3.1% |
| Total Freight Tonnes | -5.0% |
| Employees | 4.0% |
| Operators | 3.2% |
| Routes | 3.4% |

The data in this publication are voluntarily supplied by ERA reporting airports. The Directorate's thanks go to these airports. To ensure true comparisons year on year, these statistics are based on figures provided by the same group of airports for each of the periods being compared. On occasions it may be necessary to alter some graphs from previous issues retrospectively when additional airports enter the system. Rounding the data may cause some distortion to graphs. Interpretation of graphs and charts is undertaken by the ERA Directorate staff and does not necessarily reflect the views of individual members. The ERA Directorate does not take responsibility for any conclusions that may be drawn from the processing, analysis and interpretation of the tables and charts after Airport Statistics has been downloaded. The source must be acknowledged in reproduction of any part of the document.

INDIVIDUAL AIRPORT STATISTICS

January to November 2007

| | Passengers (000) | 07/06 % change | Movements (000) | 07/06 % change | Freight Tonnes | 07/06 % change |
|----------------------------|---------------------|-------------------|--------------------|-------------------|-------------------|-------------------|
| Antwerp | 164.2 | 19.0 | 48.7 | -7.2 | 4964.0 | -21.1 |
| Athens | 15281.8 | 9.7 | 190.5 | 8.1 | 108836.1 | -0.8 |
| Belfast International | 4883.4 | 5.5 | 71.5 | -0.4 | 46246.0 | -1.2 |
| Cardiff | 2000.7 | 7.3 | 41.8 | 5.3 | 2267.9 | 2.7 |
| Düsseldorf Mönchengladbach | 30.4 | 0.5 | 46.5 | 11.2 | 6.9 | 46.8 |
| Frankfurt-Hahn | 3606.1 | 6.1 | 38.2 | 4.9 | 100246.0 | -53.5 |
| Hannover | 5316.2 | -1.2 | 82.5 | 0.4 | 14944.0 | 4.5 |
| London City | 2711.4 | 23.0 | 85.2 | 15.1 | 1022.5 | 20.3 |
| London Southend | 49.9 | 69.8 | 5.0 | 18.0 | 530.6 | 32.4 |
| Munich | 31510.2 | 10.6 | 399.4 | 5.2 | 243321.0 | 12.2 |
| Nuremberg | 3889.2 | 7.2 | 75.2 | 4.4 | 11059.0 | -0.4 |
| Salzburg | 1911.4 | 11.5 | 53.4 | -13.0 | 175.5 | -8.2 |
| Southampton | 1831.4 | 2.0 | 43.8 | 1.2 | 253.6 | 44.1 |
| St. Gallen-Altenrhein | 92.9 | 1.5 | 2.4 | 4.5 | 22.0 | 0.0 |
| Stockholm Skavsta | 1798.2 | 10.5 | 28.7 | 4.9 | 11970.0 | -13.1 |
| Stuttgart | 9600.9 | 1.0 | 135.8 | 0.3 | 27697.0 | 2.1 |
| Vienna | 17272.9 | 12.3 | 256.5 | 12.1 | 188283.0 | -2.3 |
| Zürich | 19528.2 | 10.1 | 247.3 | 2.6 | 361069.0 | 28.5 |

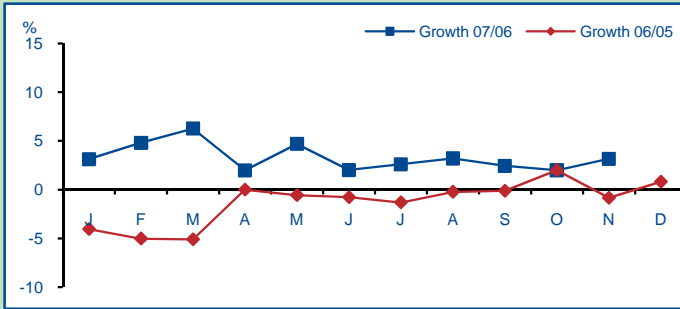
November 2007

| | Passengers (000) | 07/06 % change | Movements (000) | 07/06 % change | Freight Tonnes | 07/06 % change |
|----------------------------|---------------------|-------------------|--------------------|-------------------|-------------------|-------------------|
| Antwerp | 14.5 | 7.9 | 3.8 | 1.5 | 384.0 | -29.8 |
| Athens | 1089.8 | 11.3 | 14.9 | 4.8 | 10237.7 | -1.0 |
| Belfast International | 349.7 | -3.6 | 5.6 | -12.4 | 4697.0 | 0.4 |
| Cardiff | 116.2 | 6.0 | 3.1 | 7.9 | 224.0 | 16.7 |
| Düsseldorf Mönchengladbach | 1.7 | -23.7 | 5.2 | 16.1 | 0.0 | - |
| Frankfurt-Hahn | 247.4 | -10.4 | 3.0 | -4.3 | 11915.0 | -49.3 |
| Hannover | 412.0 | 10.9 | 6.7 | 5.7 | 1431.0 | -2.7 |
| London City | 279.7 | 25.6 | 8.2 | 8.3 | 119.2 | 32.5 |
| London Southend | 4.2 | -7.3 | 0.3 | -16.3 | 31.7 | -22.5 |
| Munich | 2714.3 | 9.9 | 36.2 | 4.7 | 24275.0 | 13.6 |
| Nuremberg | 373.0 | 8.4 | 6.4 | -4.0 | 1171.0 | 14.1 |
| Salzburg | 92.5 | -2.5 | 3.1 | -31.7 | 13.4 | -25.3 |
| Southampton | 149.2 | 2.0 | 3.6 | -1.4 | 27.6 | -4.8 |
| St. Gallen-Altenrhein | 9.3 | 17.5 | 0.2 | 18.9 | 2.0 | 0.0 |
| Stockholm Skavsta | 185.2 | 35.0 | 2.4 | 19.8 | 1044.0 | -22.2 |
| Stuttgart | 747.0 | -15.9 | 11.6 | -9.2 | 2684.0 | 5.5 |
| Vienna | 1534.4 | 21.8 | 23.9 | 14.0 | 18778.0 | 3.1 |
| Zürich | 1590.5 | 11.2 | 21.4 | 5.4 | 35891.0 | 7.3 |

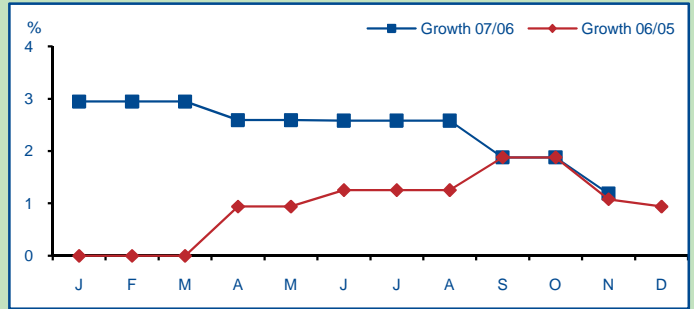
For an Excel version of the above tables please click [here](#)

CHARACTERISTICS - January to November 2007

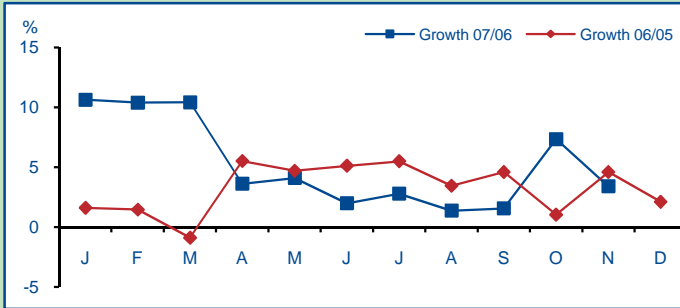
Operators



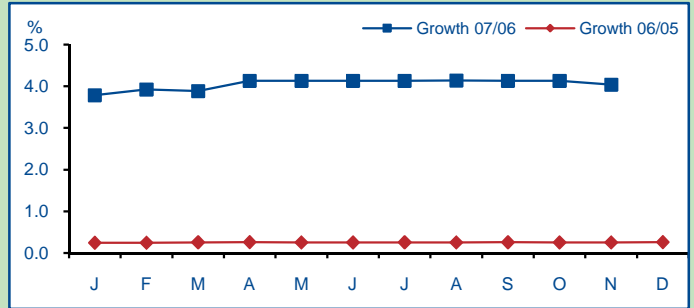
Gates



Routes

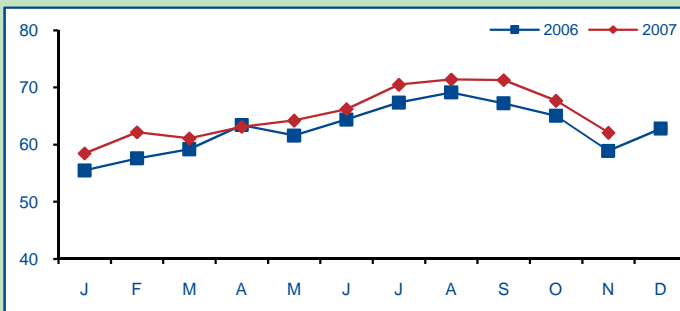


Employees*

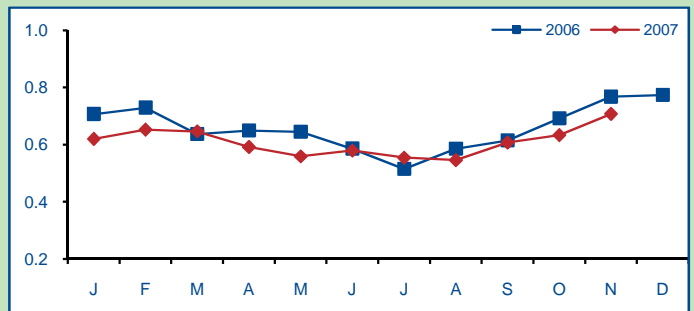


BENCHMARKING - January to November 2007

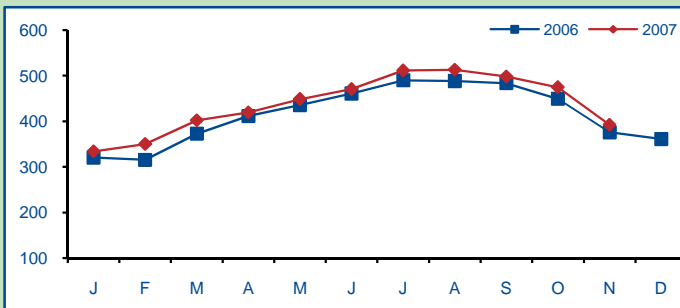
Number of Passengers per Movement



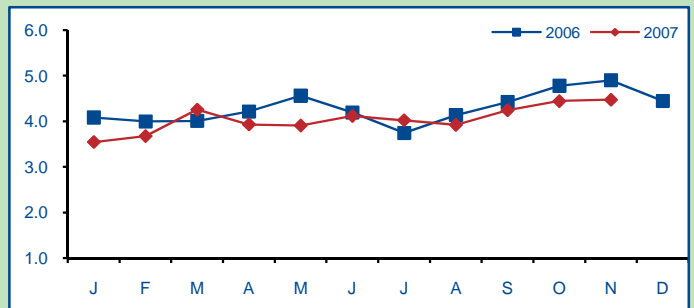
Freight Tonnes per Movement



Number of Passengers per Employee*



Freight Tonnes per Employee*



* Employees is defined as the total number of people working at the airport including sub contractors such as ground handling, catering, fuelling, concessions, security, immigration etc

