



ERA AIRPORT STATISTICS

This issue features the results for the ERA reporting airports for the period January to December 2007.

The charts and tables in this issue are comprised of data from 18 airport members who are members of the airport reporting scheme.

If you would like more information or have any comments on Airport Statistics or if your airport wishes to submit data please contact the Statistics Department of the ERA Directorate at statistics@eraa.org. Further statistics are available on the ERA website at www.eraa.org/fly-europe/statistics.php

KEY INDICATORS - 2007 v 2006

January to December Growth

Passengers enplaned	9.0%
Movements	4.6%
Total Freight Tonnes	-4.0%
Employees	4.1%
Operators	3.2%
Routes	5.4%

December Growth

Passengers enplaned	7.3%
Movements	3.7%
Total Freight Tonnes	-4.3%
Employees	4.1%
Operators	2.5%
Routes	6.6%

The data in this publication are voluntarily supplied by ERA reporting airports. The Directorate's thanks go to these airports. To ensure true comparisons year on year, these statistics are based on figures provided by the same group of airports for each of the periods being compared. On occasions it may be necessary to alter some graphs from previous issues retrospectively when additional airports enter the system. Rounding the data may cause some distortion to graphs. Interpretation of graphs and charts is undertaken by the ERA Directorate staff and does not necessarily reflect the views of individual members. The ERA Directorate does not take responsibility for any conclusions that may be drawn from the processing, analysis and interpretation of the tables and charts after Airport Statistics has been downloaded. The source must be acknowledged in reproduction of any part of the document.

INDIVIDUAL AIRPORT STATISTICS

January to December 2007

	Passengers (000)	07/06 % change	Movements (000)	07/06 % change	Freight Tonnes	07/06 % change
Antwerp	174.9	18.3	51.6	-6.2	5404.0	-20.8
Athens	16418.6	9.6	205.3	7.6	117703.4	-1.1
Belfast International	5215.0	4.6	76.8	-0.3	50016.0	-1.2
Cardiff	2103.9	7.2	44.0	4.7	2423.9	3.9
Düsseldorf Mönchengladbach	31.7	1.5	49.3	12.8	8.6	83.0
Frankfurt-Hahn	3865.8	4.4	41.0	4.1	110916.0	-53.8
Hannover	5644.6	-1.0	88.4	0.6	16318.0	4.2
London City	2929.2	23.4	91.5	14.9	1191.7	23.0
London Southend	53.3	60.9	5.3	12.7	550.4	28.7
Munich	33969.8	10.4	431.8	5.0	265607.0	11.6
Nuremberg	4212.4	7.4	81.0	3.7	12137.0	0.3
Salzburg	2057.6	9.5	57.1	-14.0	196.0	-8.4
Southampton	1964.7	2.1	47.0	1.3	285.6	41.4
St. Gallen-Altenrhein	100.5	1.4	2.6	4.6	24.0	0.0
Stockholm Skavsta	1995.6	12.5	30.9	5.7	12777.0	-17.6
Stuttgart	10268.5	0.9	146.1	0.2	30083.0	1.1
Vienna	18733.1	12.7	279.2	12.1	203682.0	-2.7
Zürich	21135.0	9.9	268.2	2.8	396795.0	29.6

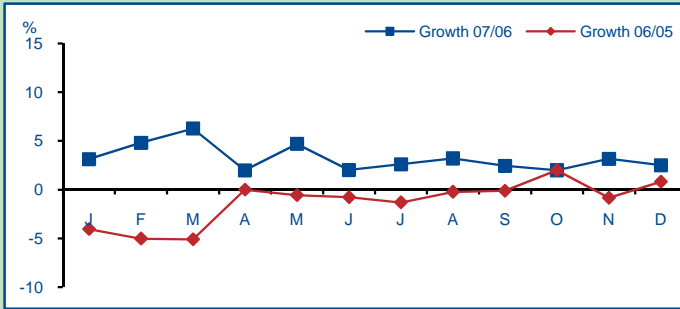
December 2007

	Passengers (000)	07/06 % change	Movements (000)	07/06 % change	Freight Tonnes	07/06 % change
Antwerp	10.7	7.7	2.9	12.8	440.0	-17.4
Athens	1136.8	8.3	14.8	1.5	8867.3	-4.4
Belfast International	331.6	-7.5	5.3	1.4	3770.0	-1.2
Cardiff	103.2	4.1	2.1	-6.4	156.0	23.8
Düsseldorf Mönchengladbach	1.4	28.9	2.8	48.0	1.7	-
Frankfurt-Hahn	259.7	-15.2	2.8	-5.4	10670.0	-55.6
Hannover	328.4	2.5	5.9	2.8	1374.0	0.8
London City	217.8	28.3	6.3	11.8	169.2	42.7
London Southend	3.4	-9.2	0.3	-35.1	19.7	-26.8
Munich	2459.6	7.9	32.5	2.8	22286.0	5.0
Nuremberg	323.3	9.3	5.8	-3.8	1078.0	8.1
Salzburg	146.2	-11.0	3.6	-26.2	20.5	-10.4
Southampton	133.3	2.5	3.2	1.7	32.0	23.1
St. Gallen-Altenrhein	7.7	-0.3	0.2	6.7	2.0	0.0
Stockholm Skavsta	197.4	34.2	2.2	16.6	807.0	-53.8
Stuttgart	667.6	0.2	10.3	-1.0	2386.0	-9.3
Vienna	1460.2	17.4	22.7	12.9	15399.0	-7.4
Zürich	1606.8	7.1	20.9	4.8	35726.0	41.6

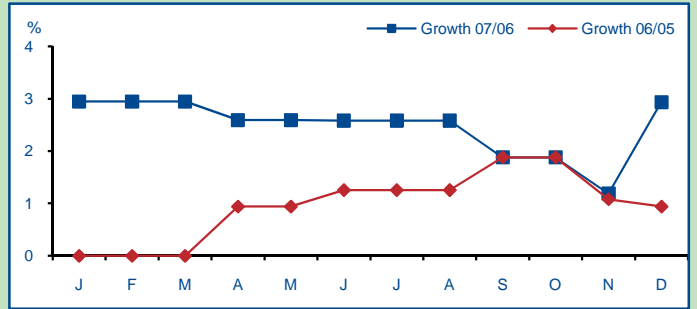
For an Excel version of the above tables please click [here](#)

CHARACTERISTICS - January to December 2007

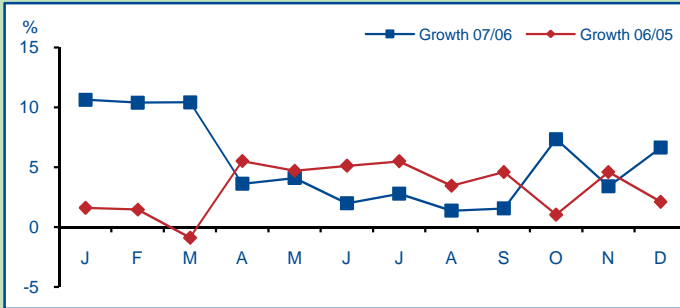
Operators



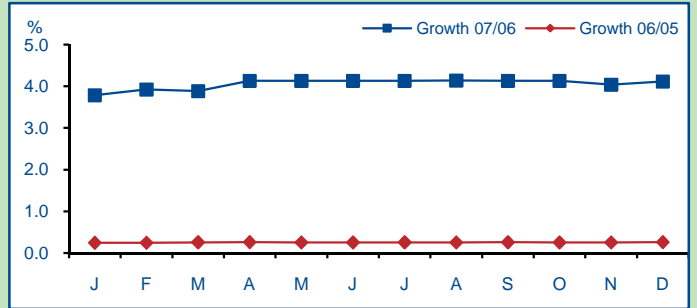
Gates



Routes

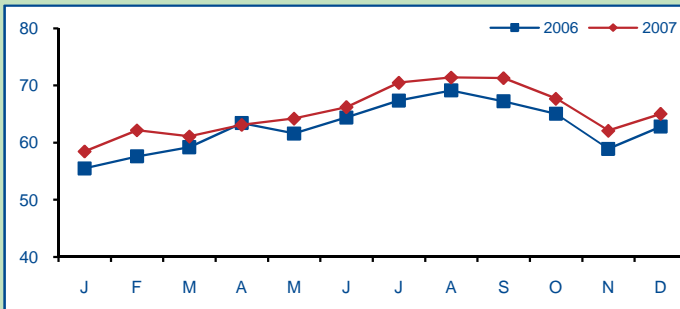


Employees*

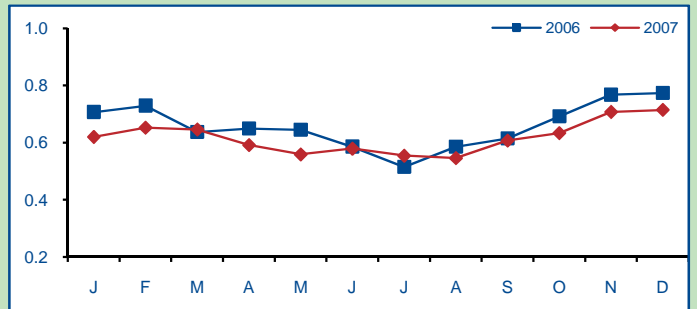


BENCHMARKING - January to December 2007

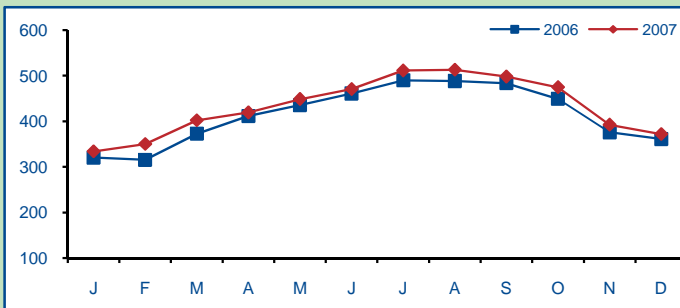
Number of Passengers per Movement



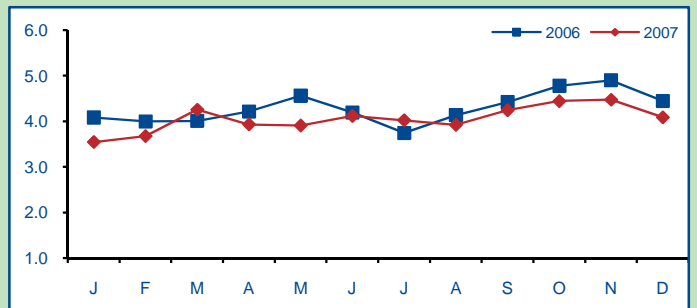
Freight Tonnes per Movement



Number of Passengers per Employee *



Freight Tonnes per Employee *



* Employees is defined as the total number of people working at the airport including sub contractors such as ground handling, catering, fuelling, concessions, security, immigration etc

