



## ERA AIRPORT STATISTICS

This issue features the results for the ERA reporting airports for the period January to June 2008.

The charts and tables in this issue are comprised of data from 17 airport members who are members of the airport reporting scheme.

If you would like more information or have any comments on Airport Statistics or if your airport wishes to submit data please contact the Statistics Department of the ERA Directorate at [statistics@eraa.org](mailto:statistics@eraa.org) Further statistics are available on the ERA website at [www.eraa.org/fly-europe/statistics.php](http://www.eraa.org/fly-europe/statistics.php)

### KEY INDICATORS - 2008 v 2007

#### January to June Growth

Passengers enplaned	4.9%
Movements	3.2%
Total Freight Tonnes	8.0%
Employees	0.4%
Operators	-0.9%
Routes	3.1%

#### June Growth

Passengers enplaned	4.2%
Movements	2.7%
Total Freight Tonnes	5.0%
Employees	0.09%
Operators	-6.0%
Routes	3.2%

The data in this publication are voluntarily supplied by ERA reporting airports. The Directorate's thanks go to these airports. To ensure true comparisons year on year, these statistics are based on figures provided by the same group of airports for each of the periods being compared. On occasions it may be necessary to alter some graphs from previous issues retrospectively when additional airports enter the system. Rounding the data may cause some distortion to graphs. Interpretation of graphs and charts is undertaken by the ERA Directorate staff and does not necessarily reflect the views of individual members. The ERA Directorate does not take responsibility for any conclusions that may be drawn from the processing, analysis and interpretation of the tables and charts after Airport Statistics has been downloaded. The source must be acknowledged in reproduction of any part of the document.

## INDIVIDUAL AIRPORT STATISTICS

January to June 2008

	Passengers (000)	07/06 % change	Movements (000)	07/06 % change	Freight Tonnes	07/06 % change
Antwerp	93.2	6.0	27.7	7.0	2781.0	3.1
Athens	7536.1	2.3	95.4	-0.8	62130.3	8.0
Belfast International	2473.7	1.1	38.7	1.4	23904.1	-4.0
Düsseldorf Mönchengladbach	15.2	-9.2	24.5	-11.6	2.4	-53.6
Frankfurt-Hahn	1824.7	-5.2	20.2	0.6	60472.0	31.1
Hannover	2624.6	2.8	43.3	1.8	9241.0	31.7
London City	1629.9	18.6	47.6	3.9	881.4	57.9
London Southend	29.9	12.3	14.1	-3.4	215.6	-39.5
Munich	17008.4	6.1	216.7	3.0	133973.0	5.9
Nuremberg	2118.2	5.1	38.9	-2.9	5837.0	-1.3
Salzburg	1083.3	-1.6	32.7	10.3	111.1	16.6
Southampton	957.1	4.7	22.2	-4.0	160.0	23.1
St. Gallen-Altenrhein	47.7	-3.0	1.3	-2.2	12.0	0.0
Stockholm Skavsta	1180.5	31.5	18.1	20.1	3964.0	-38.7
Stuttgart	4687.7	-1.4	70.5	-0.8	15810.0	7.3
Vienna	9638.5	12.7	148.0	10.4	99777.0	0.3
Zürich	10338.3	1.5	136.1	3.9	213420.0	10.0

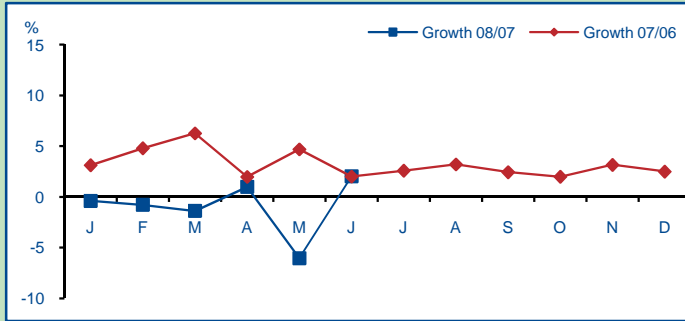
June 2008

	Passengers (000)	08/07 % change	Movements (000)	08/07 % change	Freight Tonnes	08/07 % change
Antwerp	16.2	10.0	5.3	14.1	466.0	0.4
Athens	1603.1	2.2	18.5	-0.6	10620.3	2.1
Belfast International	508.2	2.7	7.0	-1.2	4014.0	-5.1
Düsseldorf Mönchengladbach	3.0	-7.8	3.7	-41.7	0.0	-96.7
Frankfurt-Hahn	376.8	5.3	4.0	15.9	9947.0	28.8
Hannover	538.3	3.1	8.1	0.7	1863.0	40.9
London City	291.1	14.1	8.6	6.0	151.0	80.2
London Southend	5.1	13.3	3.9	-2.5	52.0	6.1
Munich	3166.3	4.3	38.8	3.3	22549.0	0.3
Nuremberg	342.6	-4.8	6.9	-1.2	838.0	-23.0
Salzburg	154.1	-8.3	5.3	7.3	34.9	82.4
Southampton	187.3	1.8	4.1	-1.1	23.0	0.0
St. Gallen-Altenrhein	8.7	-7.5	0.2	-0.9	2.0	0.0
Stockholm Skavsta	226.1	36.6	3.4	30.8	699.0	-24.3
Stuttgart	935.9	-4.0	13.1	-0.6	2625.0	10.1
Vienna	1840.5	7.4	27.4	11.0	16950.0	-2.4
Zürich	1912.5	6.3	24.5	4.9	35721.0	8.5

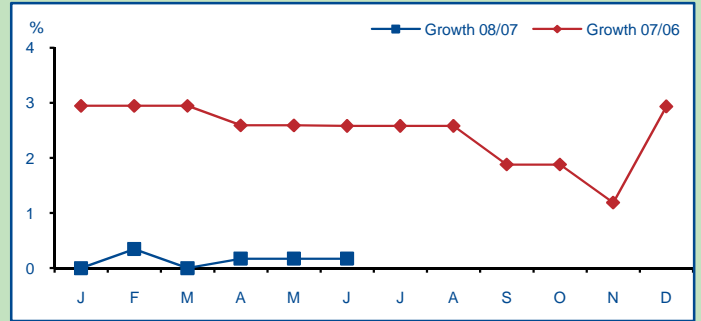
For an Excel version of the above tables please click [here](#)

# CHARACTERISTICS - January to June 2008

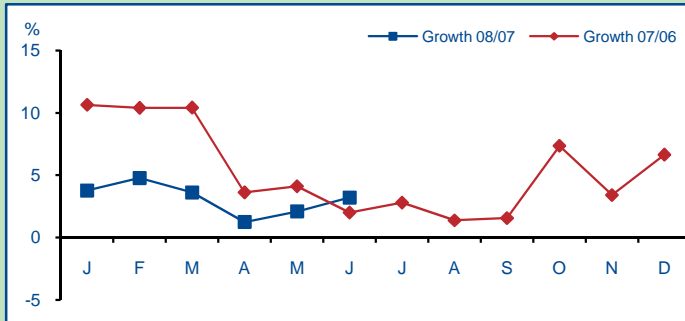
## Operators



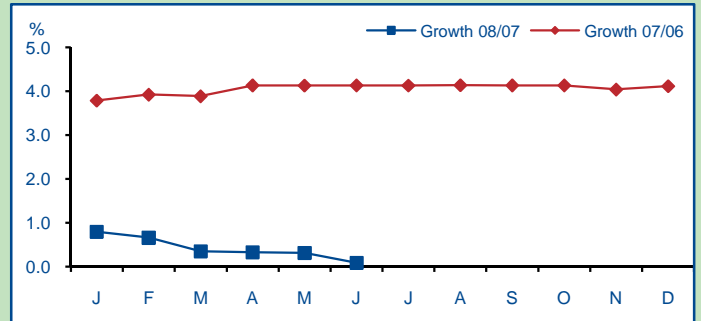
## Gates



## Routes

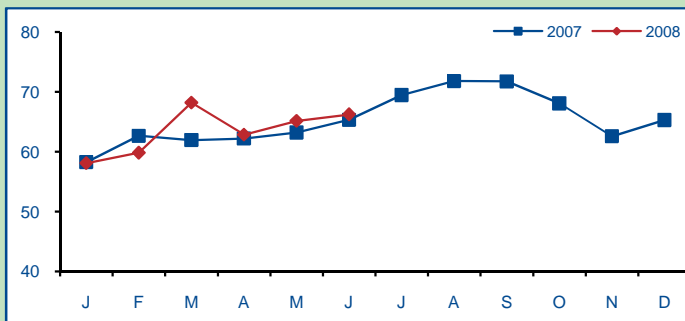


## Employees\*

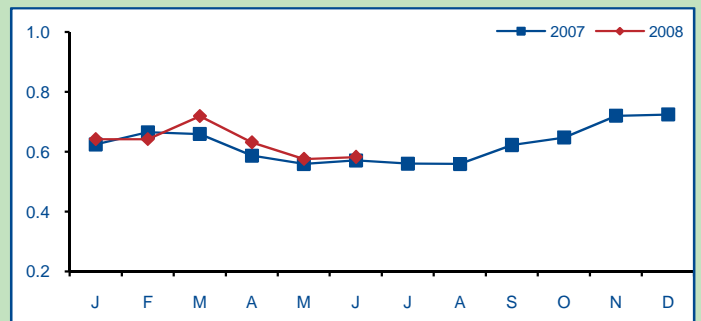


# BENCHMARKING - January to June 2008

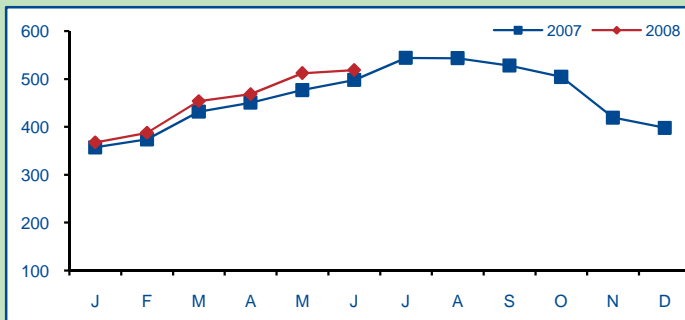
## Number of Passengers per Movement



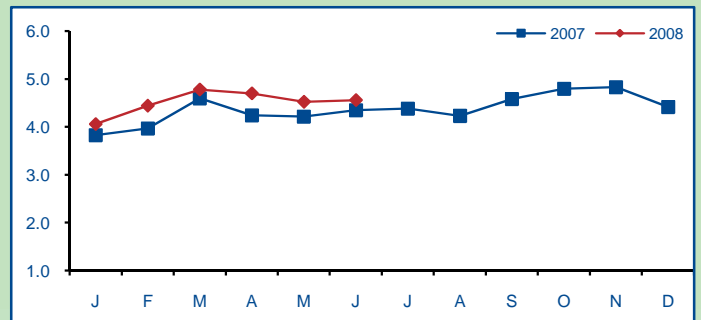
## Freight Tonnes per Movement



## Number of Passengers per Employee \*



## Freight Tonnes per Employee\*



\* Employees is defined as the total number of people working at the airport including sub contractors such as ground handling, catering, fuelling, concessions, security, immigration etc

