



ERA AIRPORT STATISTICS

This issue features the results for the ERA reporting airports for the period January to August 2008.

The charts and tables in this issue are comprised of data from 17 airport members who are members of the airport reporting scheme.

If you would like more information or have any comments on Airport Statistics or if your airport wishes to submit data please contact the Statistics Department of the ERA Directorate at statistics@eraa.org Further statistics are available on the ERA website at www.eraa.org/fly-europe/statistics.php

KEY INDICATORS - 2008 v 2007

January to August Growth

Passengers enplaned	4.2%
Movements	2.5%
Total Freight Tonnes	7.3%
Employees	0.4%
Operators	-0.9%
Routes	3.4%

August Growth

Passengers enplaned	1.2%
Movements	-1.0%
Total Freight Tonnes	3.1%
Employees	0.5%
Operators	-1.3%
Routes	3.2%

The data in this publication are voluntarily supplied by ERA reporting airports. The Directorate's thanks go to these airports. To ensure true comparisons year on year, these statistics are based on figures provided by the same group of airports for each of the periods being compared. On occasions it may be necessary to alter some graphs from previous issues retrospectively when additional airports enter the system. Rounding the data may cause some distortion to graphs. Interpretation of graphs and charts is undertaken by the ERA Directorate staff and does not necessarily reflect the views of individual members. The ERA Directorate does not take responsibility for any conclusions that may be drawn from the processing, analysis and interpretation of the tables and charts after Airport Statistics has been downloaded. The source must be acknowledged in reproduction of any part of the document.

INDIVIDUAL AIRPORT STATISTICS

January to August 2008

	Passengers (000)	07/06 % change	Movements (000)	07/06 % change	Freight Tonnes	07/06 % change
Antwerp	119.0	3.5	37.5	5.1	3629.0	1.1
Athens	11198.5	1.1	136.2	-1.8	83765.3	8.1
Düsseldorf Mönchengladbach	21.3	-9.9	34.4	-5.7	2.6	-49.9
Frankfurt-Hahn	2672.8	-2.8	28.1	2.2	80271.0	25.6
Hannover	3798.9	1.8	59.2	0.2	12871.0	20.7
London City	2179.5	16.1	63.4	4.5	1164.7	66.8
London Southend	38.3	8.6	21.6	-6.4	289.6	-33.5
Munich	23314.6	4.2	290.9	1.7	177063.0	3.6
Nuremberg	2837.5	2.4	52.3	-4.4	7292.0	-6.3
Salzburg	1409.4	-3.0	45.4	10.4	159.3	21.9
Southampton	1341.6	2.2	30.6	-4.3	199.0	14.4
St. Gallen-Altenrhein	61.1	-4.8	1.7	-2.5	16.0	0.0
Stockholm Skavsta	1679.9	32.4	24.7	21.7	5027.0	-42.1
Stuttgart	6674.3	-2.1	96.0	-1.2	21486.0	7.5
Vienna	13446.0	10.1	199.6	8.2	132514.0	0.1
Zürich	14608.3	3.1	185.0	3.5	283753.0	10.0

August 2008

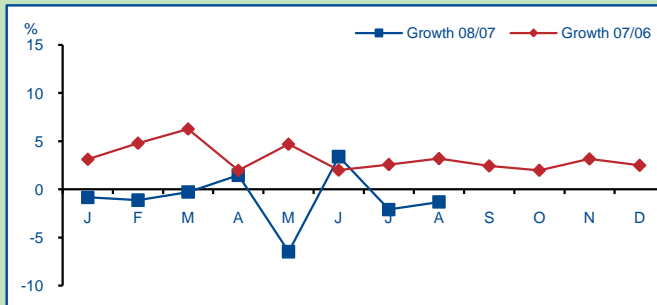
	Passengers (000)	08/07 % change	Movements (000)	08/07 % change	Freight Tonnes	08/07 % change
Antwerp	12.0	-10.9	4.9	-9.9	413.0	-8.6
Athens	1864.7	-0.6	20.6	-3.6	10744.1	13.7
Düsseldorf Mönchengladbach	3.5	-11.2	4.9	1.5	0.0	-
Frankfurt-Hahn	422.4	2.0	4.0	11.0	9773.0	11.9
Hannover	563.7	-2.3	7.7	-5.4	1795.0	3.0
London City	256.3	6.0	7.3	1.9	130.3	94.5
London Southend	4.6	-11.6	3.7	-18.2	33.0	3.1
Munich	3132.0	-1.2	36.3	-2.8	20613.0	-5.3
Nuremberg	373.3	-5.2	6.8	-8.3	683.0	-21.6
Salzburg	170.4	-5.7	6.7	14.7	29.7	64.8
Southampton	192.3	-5.7	4.2	-4.6	17.0	-26.1
St. Gallen-Altenrhein	5.8	-13.7	0.2	-8.9	2.0	-
Stockholm Skavsta	240.6	35.2	3.1	23.1	462.0	-55.5
Stuttgart	1006.3	-4.8	12.3	-2.9	2767.0	6.0
Vienna	1885.9	4.2	25.2	1.5	16376.0	0.2
Zürich	2119.9	7.4	24.5	2.9	33647.0	7.2

For an Excel version of the above tables please click here

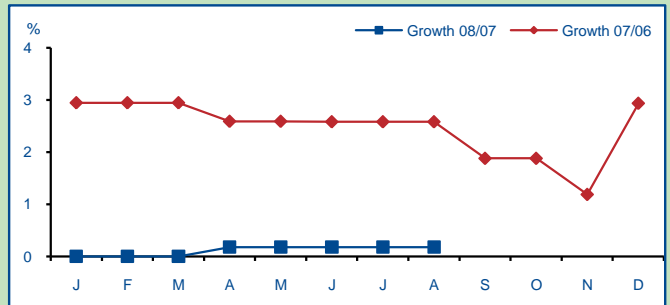


CHARACTERISTICS - January to August 2008

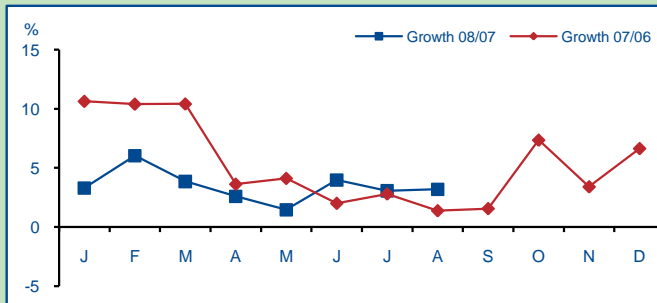
Operators



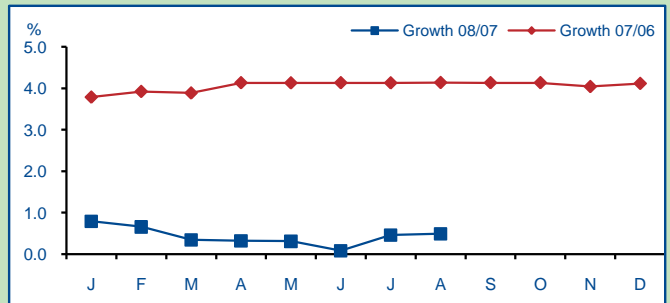
Gates



Routes

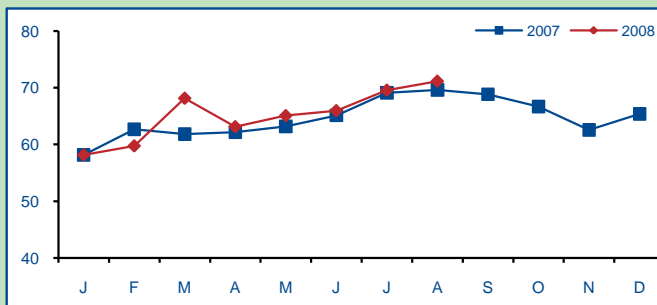


Employees*

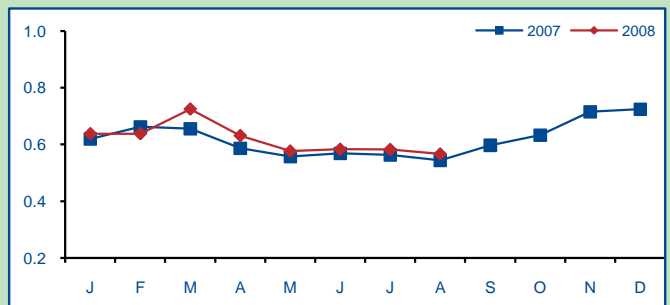


BENCHMARKING - January to August 2008

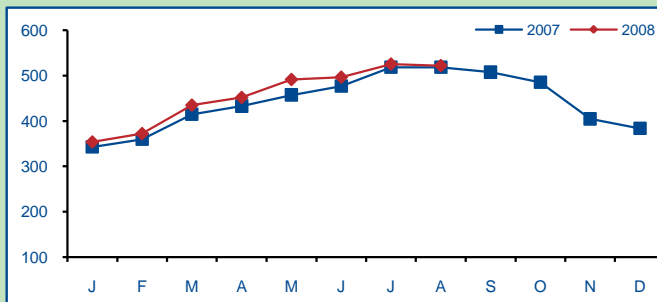
Number of Passengers per Movement



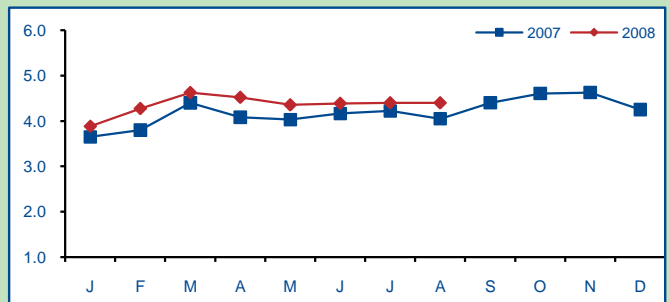
Freight Tonnes per Movement



Number of Passengers per Employee*



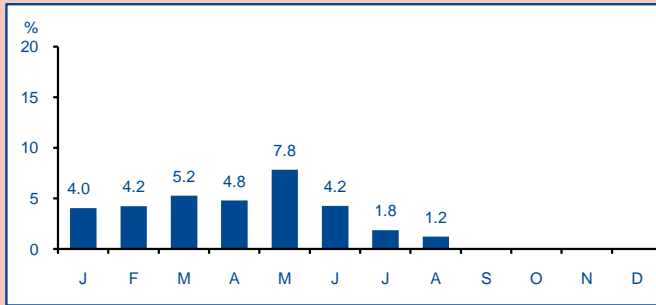
Freight Tonnes per Employee*



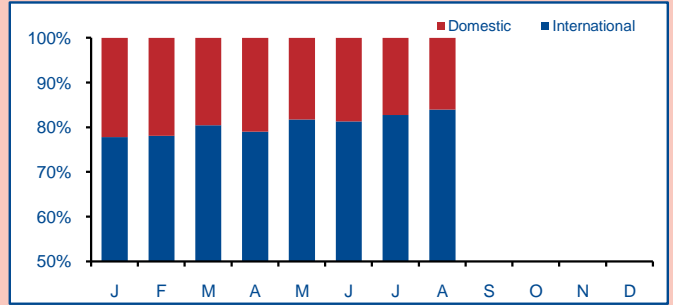
* Employees is defined as the total number of people working at the airport including sub contractors such as ground handling, catering, fuelling, concessions, security, immigration etc

TRAFFIC - January to August 2008

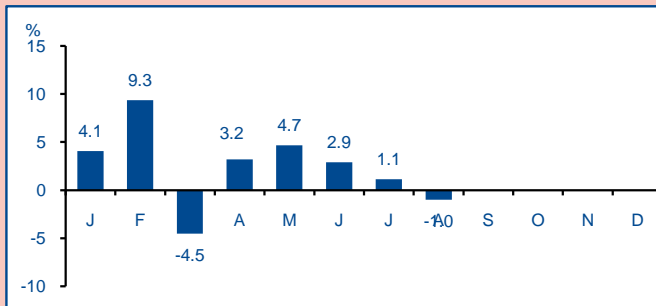
Passenger Growth



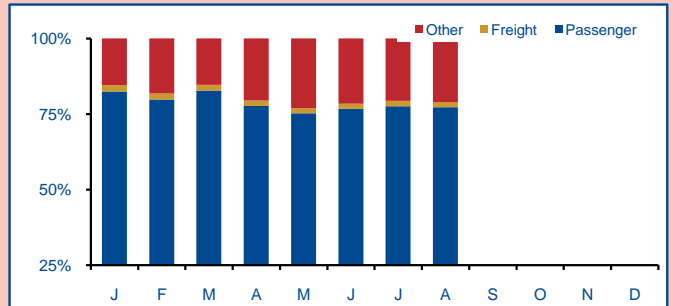
Passenger Split



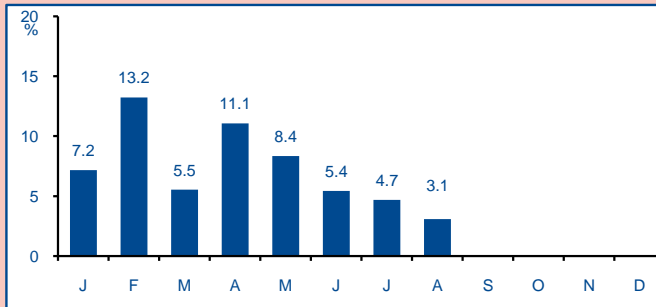
Movement Growth



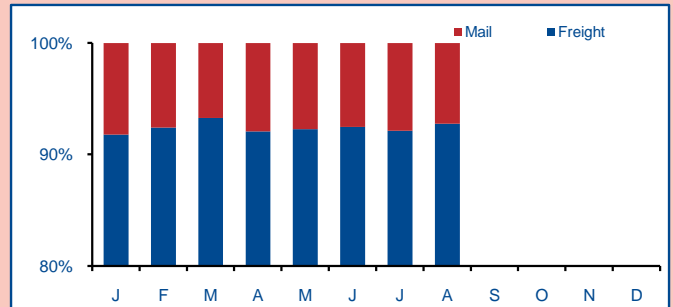
Movement Split



Total Freight Growth



Freight and Mail Tonnes



ERA CONTACT

If ERA airport members wish to contribute statistical data please contact the Directorate at the address opposite.

The Baker Suite, Fair Oaks Airport, Chobham
 Woking, Surrey, GU24 8HX
 United Kingdom
 Tel: +44 (0) 1276 856495
 Fax: +44 (0) 1276 859485
 Website: www.eraa.org
 E-mail: statistics@eraa.org