



ERA AIRPORT STATISTICS

Welcome to Airport Statistics. This issue features the results for the ERA reporting airports for the period January to July 2005.

The charts and tables in this issue are comprised of data from 13 airport members who are members of the airport reporting scheme.

If you would like more information or have any comments on Airport Performance or if your airport wishes to submit data please contact the Statistics Department of the ERA Directorate at statistics@eraa.org

KEY INDICATORS - 2005 v 2004

January to July Growth

Passengers enplaned	7.8%
Movements	3.9%
Total Freight Tonnes	16.6%
Employees	0.7%
Operators	-0.8%
Routes	1.8%

July Growth

Passengers enplaned	8.8%
Movements	5.0%
Total Freight Tonnes	17.7%
Employees	0.7%
Operators	-0.4%
Routes	0.6%

The data in this publication are voluntarily supplied by ERA reporting airports. The Directorate's thanks go to these airports. To ensure true comparisons year on year, these statistics are based on figures provided by the same group of airports for each of the periods being compared. Providers who have not been able to supply data for the preceding year are only included in the Airport Performance table on page 1. All other charts use comparative data. On occasions it may be necessary to alter some graphs from previous issues retrospectively when additional airports enter the system. Rounding the data may cause some distortion to graphs. Interpretation of graphs and charts is undertaken by the ERA Directorate staff and does not necessarily reflect the views of individual members. The source must be acknowledged in reproduction of any part of the document.

INDIVIDUAL AIRPORT STATISTICS

January to July 2005

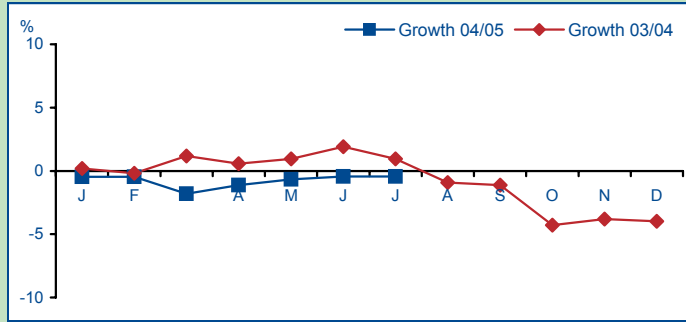
Airport	Code	Passengers (000)			Movements (000)			Freight Tonnes		
		2004	2005	% Change	2004	2005	% Change	2004	2005	% Change
Antwerp	ANR	87.4	82.9	-5.2	35.1	31.6	-9.9	2340.0	2866.0	22.5
Cardiff	CWL	1080.4	986.0	-8.7	27.5	24.8	-9.6	1647.0	1509.0	-8.4
Düsseldorf Mönchengladbach	MGL	24.5	21.9	-10.7	25.3	25.9	2.5	218.8	106.6	-51.3
Frankfurt-Hahn	HHN	1558.7	1734.6	11.3	18.5	21.1	14.2	108148.0	119461.0	10.5
Hannover	HAJ	2903.8	3139.0	8.1	49.4	51.0	3.2	9098.0	9350.0	2.8
London City Airport	LCY	960.6	1161.9	21.0	34.5	41.2	19.3	198.4	666.9	236.2
Maastricht	MST	154.2	179.3	16.3	18.5	13.3	-27.9	20785.0	31448.0	51.3
Munich	MUC	15059.1	16133.2	7.1	218.9	230.2	5.1	102706.0	126728.0	23.4
Nuremberg	NUE	2045.0	2183.9	6.8	42.0	43.8	4.2	7062.0	5630.0	-20.3
Salzburg	SZG	875.4	1056.1	20.6	34.6	40.3	16.7	111.3	107.4	-3.5
Southampton	SOU	861.7	1031.3	19.7	21.3	25.0	17.4	159.0	134.0	-15.7
St.Gallen-Altenrhein	ACH	58.8	54.7	-6.9	1.8	1.5	-17.1	14.0	14.0	0.0
Stuttgart	STR	4726.4	5076.0	7.4	78.2	80.0	2.4	15897.0	14218.0	-10.6

July 2005

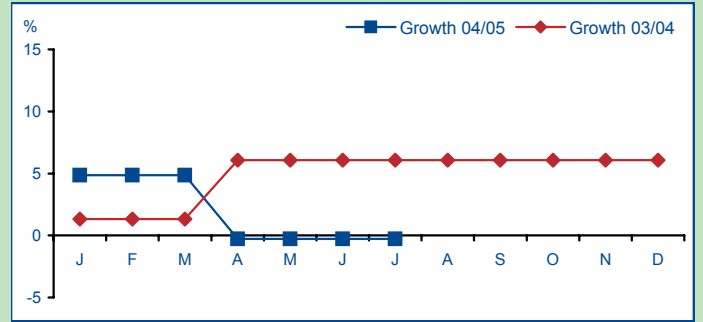
Airport	Code	Passengers (000)			Movements (000)			Freight Tonnes		
		2004	2005	% Change	2004	2005	% Change	2004	2005	% Change
Antwerp	ANR	12.3	11.7	-4.4	5.3	5.0	-5.2	350.0	410.0	17.1
Cardiff	CWL	220.4	211.2	-4.1	4.6	5.0	8.9	258.0	176.0	-31.8
Düsseldorf Mönchengladbach	MGL	5.0	4.5	-9.7	3.7	5.2	40.3	32.6	0.0	-100.0
Frankfurt-Hahn	HHN	262.3	295.5	12.6	2.9	3.5	19.8	17603.0	21083.0	19.8
Hannover	HAJ	573.2	626.3	9.3	8.5	8.5	0.5	1405.0	1292.0	-8.0
London City Airport	LCY	140.7	170.0	20.8	4.9	6.0	22.3	23.7	92.2	289.0
Maastricht	MST	29.9	43.2	44.4	2.6	1.6	-40.2	2930.0	3591.0	22.6
Munich	MUC	2450.3	2652.8	8.3	34.3	35.5	3.2	15994.0	19461.0	21.7
Nuremberg	NUE	268.1	279.3	4.2	6.3	6.6	4.7	955.0	814.0	-14.8
Salzburg	SZG	149.2	164.7	10.4	6.8	6.9	1.9	16.4	15.9	-3.1
Southampton	SOU	148.7	194.6	30.9	3.4	4.2	25.1	26.0	21.0	-19.2
St.Gallen-Altenrhein	ACH	7.8	7.8	0.2	0.2	0.2	-4.2	2.0	2.0	0.0
Stuttgart	STR	776.8	828.2	6.6	12.1	12.2	1.2	2266.0	2314.0	2.1

CHARACTERISTICS

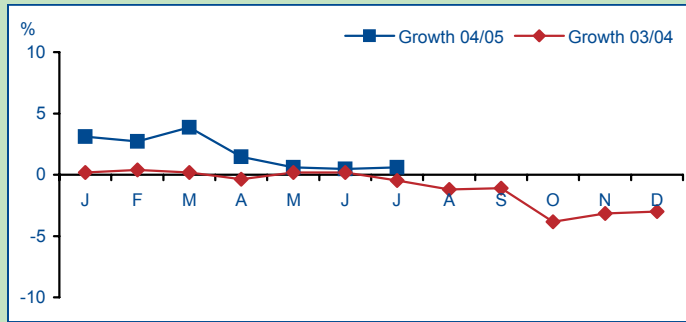
Operators



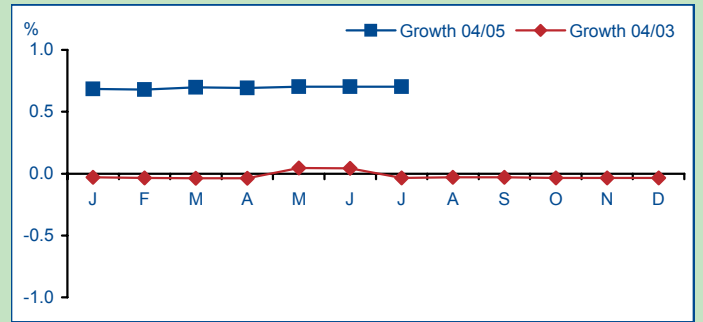
Gates



Routes

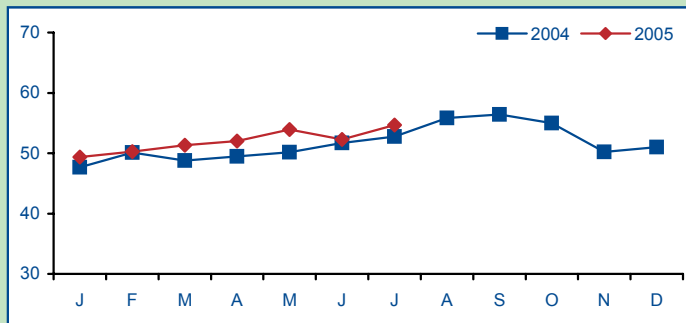


Employees*

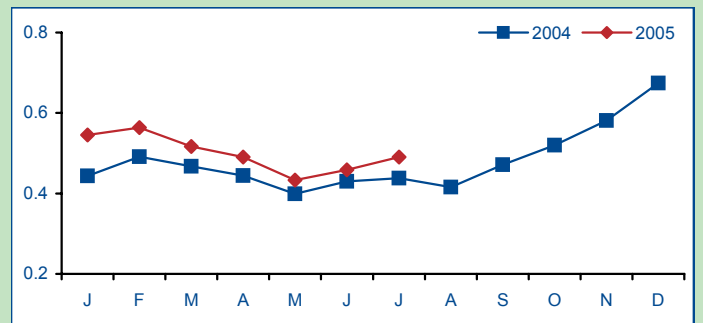


BENCHMARKING

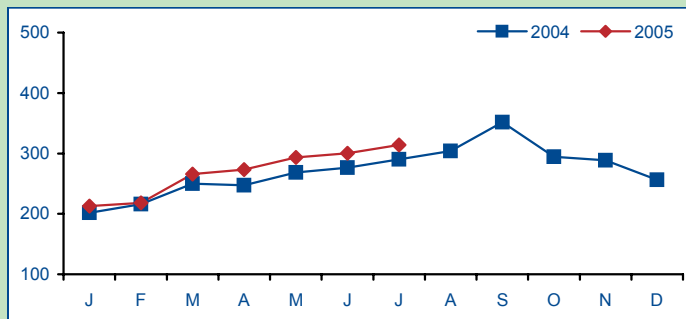
Number of Passengers per Movement



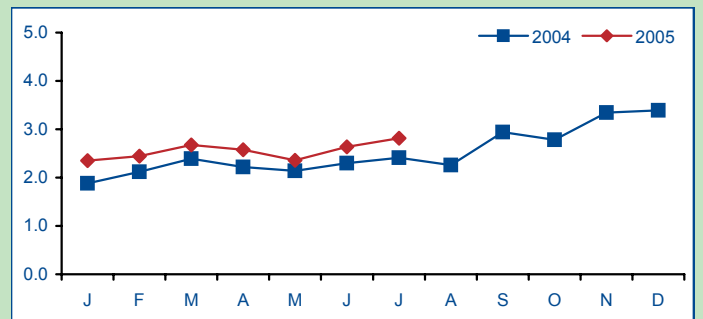
Freight Tonnes per Movement



Number of Passengers per Employee *



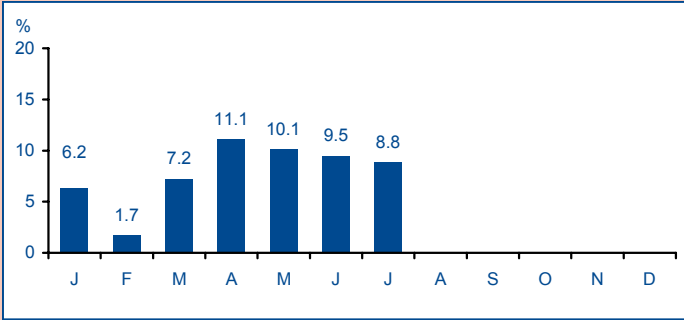
Freight Tonnes per Employee*



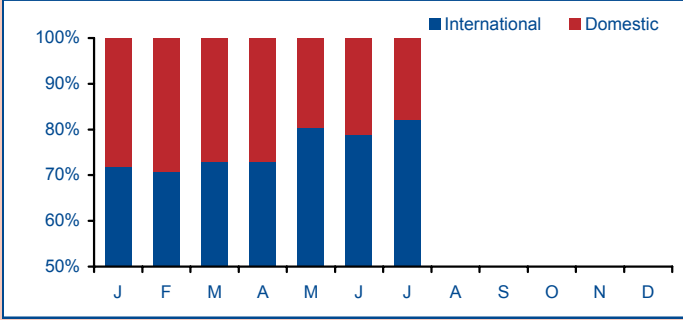
* Employees is defined as the total number of people working at the airport including sub contractors such as ground handling, catering, fuelling, concessions, security, immigration etc

TRAFFIC

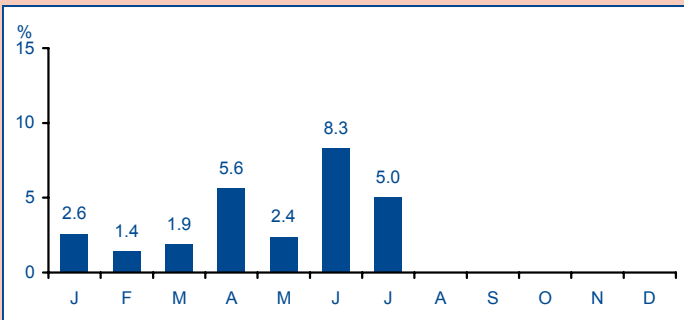
Passenger Growth - 2005



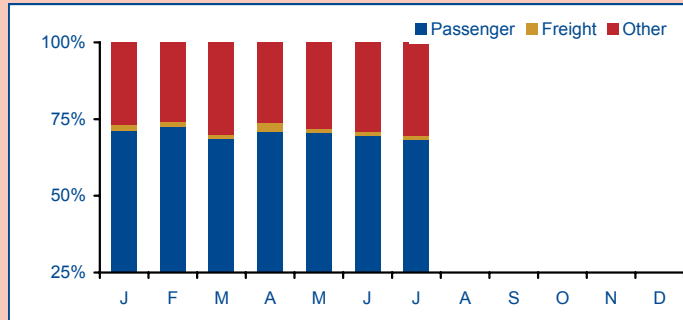
Passenger Split



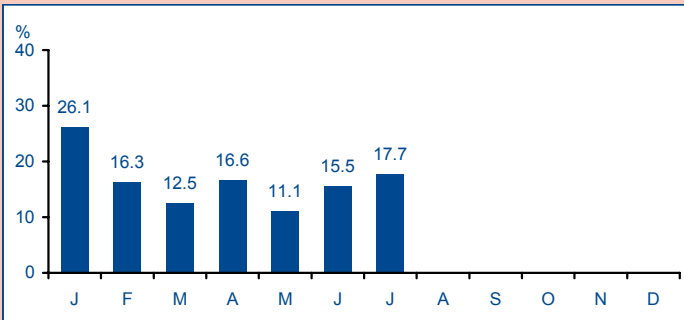
Movement Growth



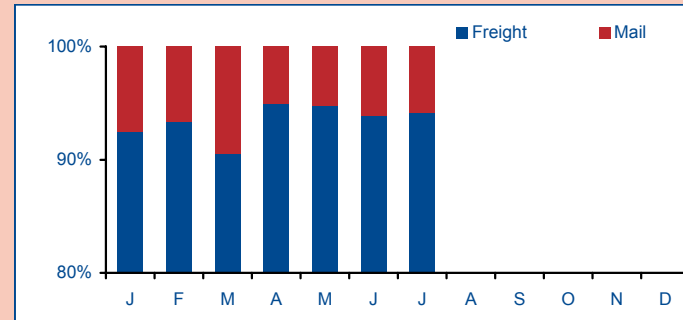
Movement Split



Total Freight Growth



Freight and Mail Tonnes - 2005



ERA CONTACT

Lorna Ana Casals
 Controller Industry Analysis

If ERA airport members wish to contribute statistical data please contact the Directorate at the address opposite.

The Baker Suite, Fairoaks Airport, Chobham
 Woking, Surrey, GU24 8HX
 United Kingdom
 Tel: +44 (0) 1276 485579
 Fax: +44 (0) 1276 859485
 Website: www.eraa.org
 E-mail: controllerindustryanalysis@eraa.org