



ISSUE 01 | JANUARY 2006

ERA AIRLINE MONTHLY STATISTICS

Following are the interim results received so far from ERA reporting carriers for January 2006.

These figures reflect the provisional results of the 35 ERA member airlines which currently report data on a monthly basis.

Please note that these figures are subject to change, since data may have to be revised retrospectively when carriers are added or deleted. The final version will be published quarterly on the website with a summary of the key indicators reproduced in Regional International.

Any airline member wishing to contribute data should contact the Statistics Department of the ERA Directorate at statistics@eraa.org further information. Further statistics are available on the ERA website at www.eraa.org/fly-europe/statistics.php

SCHEDULED KEY INDICATORS - 2006 v 2005

January Growth

Passengers	8.9%
Passenger km	14.1%
Seats	6.1%
Seat km	5.3%
Hours	1.1%
Landings	1.7%
Passenger Load Factor	59.8%
Sector Distance km	539
Sector Time hr.min	1.14

The data in this publication are voluntarily supplied by ERA reporting airlines. The Directorate's thanks go to these airlines. To ensure true comparisons year on year, these statistics are based on figures provided by the same group of airlines for each of the periods being compared. Data for new members which have been in operation for more than a year are only included when the preceding year's data have been supplied. Unless otherwise indicated, comparisons given are for the same period of the previous year for reporting carriers only. Rounding the data may cause some distortion to graphs. Interpretation of graphs and charts is undertaken by the ERA Directorate staff and does not necessarily reflect the views of individual members. The ERA Directorate does not take responsibility for any conclusions that may be drawn from the processing, analysis and interpretation of the tables and charts after Airline Statistics has been downloaded. The source must be acknowledged in reproduction of any part of the document.

INDIVIDUAL AIRLINE STATISTICS

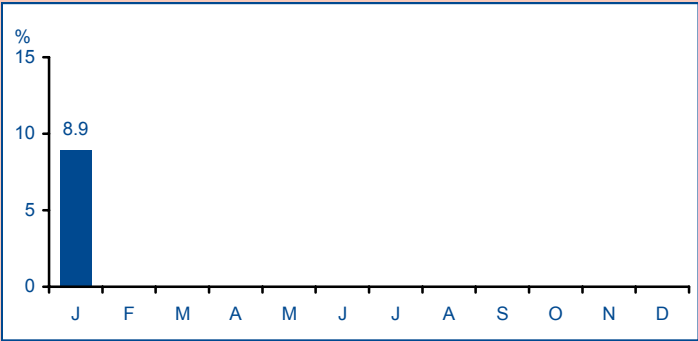
January 2006

Scheduled Operations	Passengers (000)	06/05 % change	RPKs (mil)	06/05 % change	ASKs (mil)	06/05 % change	PLF (%)
Adria Airways	60.0	12.0	55.3	9.8	98.7	-1.3	56.0
Aegean Airlines	253.1	6.8	143.2	4.6	226.0	-5.6	63.3
Aer Arann	98.3	53.3	-	-	-	-	-
Air Alps Aviation	18.0	16.4	8.4	-	15.0	-	55.9
Air Dolomiti	82.2	8.8	38.6	5.8	72.5	9.0	53.2
Air Nostrum	338.6	28.1	181.3	22.4	353.1	26.7	51.3
Air Southwest	22.2	53.9	8.4	38.1	12.5	38.3	67.0
airBaltic	88.3	66.8	166.4	167.5	166.4	35.1	100.0
Alitalia Express	147.1	-0.4	78.5	-2.0	124.8	-17.3	62.9
Arkia Israeli Airlines	44.7	9.9	13.9	13.1	19.9	14.1	70.0
ATA Aerocondor	9.2	15.1	14.6	280.9	16.1	142.0	90.9
Augsburg Airways	47.0	10.9	17.1	-6.8	31.1	-10.0	54.8
Binter Canarias	209.0	22.3	46.6	56.1	71.5	35.8	65.2
Blue1	113.5	24.7	67.3	17.2	114.5	5.4	58.8
Brit Air (+ Air France)	267.7	5.3	147.3	5.2	266.8	4.8	55.2
Carpatair	29.9	27.9	23.2	27.6	41.5	43.6	56.0
Cimber Air	54.7	10.5	16.4	-4.0	31.5	-27.6	52.0
CityJet	115.1	24.2	78.3	16.1	128.7	10.6	60.8
Contact Air	32.3	42.0	13.0	70.0	25.5	66.5	51.1
Eastern Airways	35.1	13.1	15.0	16.8	35.4	22.4	42.4
EuroLOT	63.4	-8.0	23.0	-5.0	45.2	-0.5	50.8
Eurowings	169.8	-3.0	84.6	15.4	149.4	16.6	56.7
Golden Air	23.7	-	8.8	-	11.4	-	77.9
KLM cityhopper	193.9	-8.9	116.2	-7.0	181.5	-3.5	64.0
KLM cityhopper UK	156.8	5.9	94.5	12.8	144.7	25.2	65.3
Lufthansa CityLine	444.4	-0.2	295.7	0.4	516.4	2.0	57.3
Lufthansa Regional	775.7	-4.1	449.0	4.4	794.9	5.9	56.5
Luxair	54.6	-	32.6	-	76.8	-	42.4
Malmö Aviation	81.7	19.3	39.9	18.0	69.3	-3.0	57.5
PGA Portugalia Airlines	72.6	10.1	70.4	16.4	145.6	18.6	48.4
Régional	288.7	14.9	166.0	14.0	306.3	11.5	54.2
SATA Air Açores	23.1	-1.7	3.5	-2.3	6.3	2.1	56.3
Skyways	48.6	-31.0	62.9	112.1	24.3	-60.3	258.7
Swiss European Air Lines	200.0	-11.7	115.8	-12.7	213.2	-16.7	54.3
Tyrolean Airways	292.7	19.7	177.6	3.7	321.7	2.1	55.2
Widerøe	134.6	-2.2	41.7	1.3	86.4	0.7	48.3

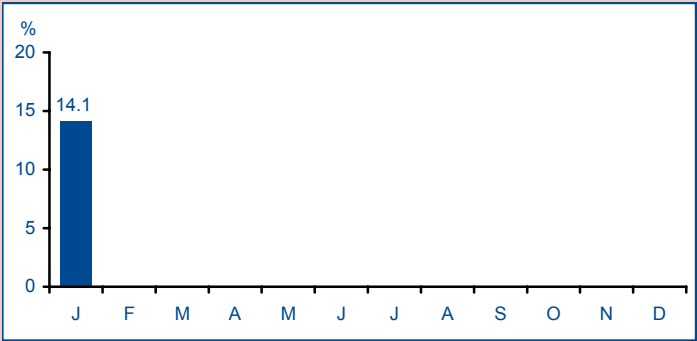
For an Excel version of the above table please [click here](#)

SCHEDULED STATISTICS - January 2006

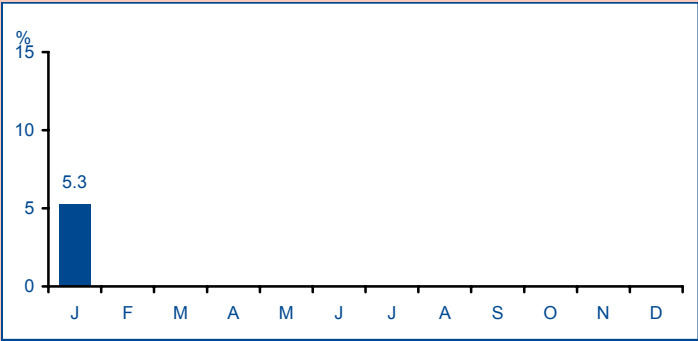
Passenger Growth



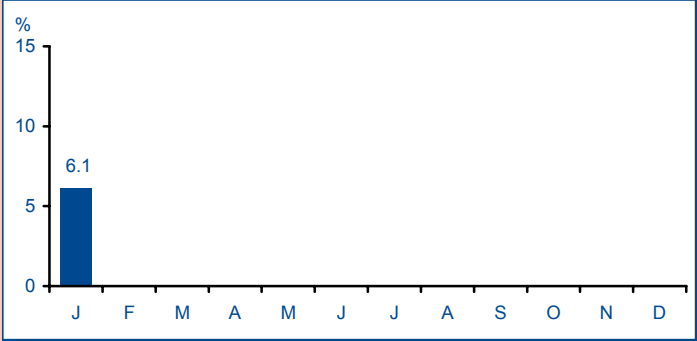
RPK* Growth



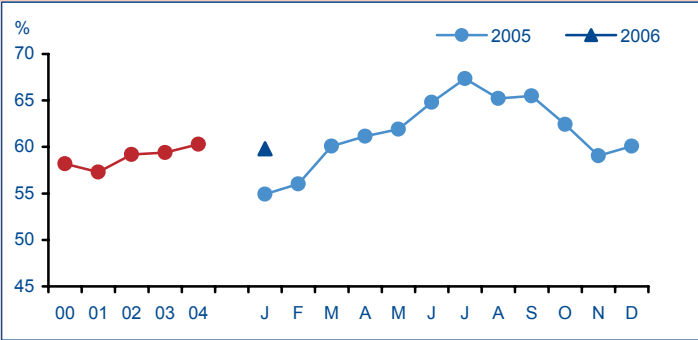
ASK* Growth



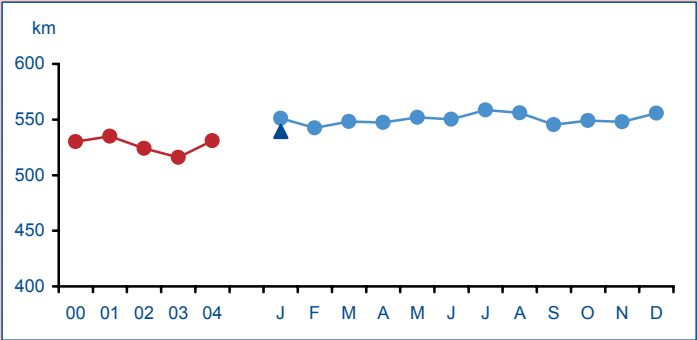
Seats' Growth



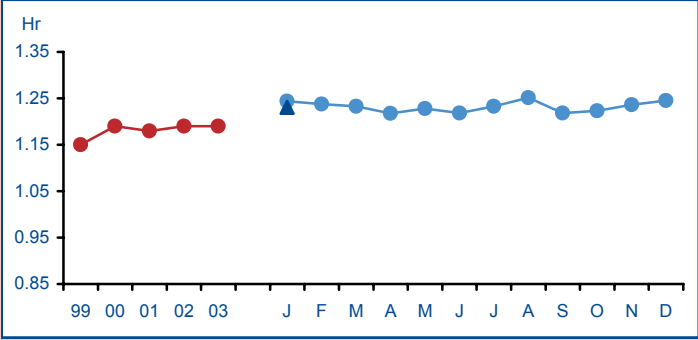
Passenger Load Factor



Sector Distance



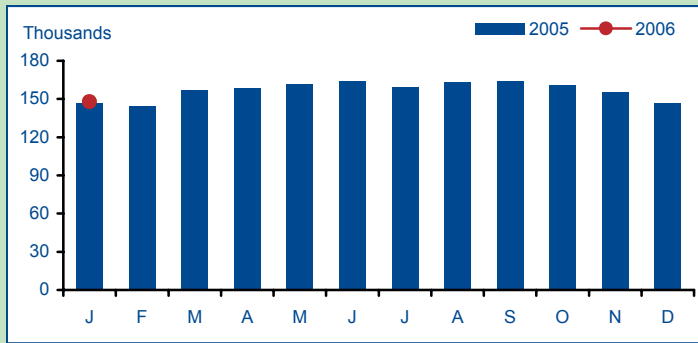
Sector Time



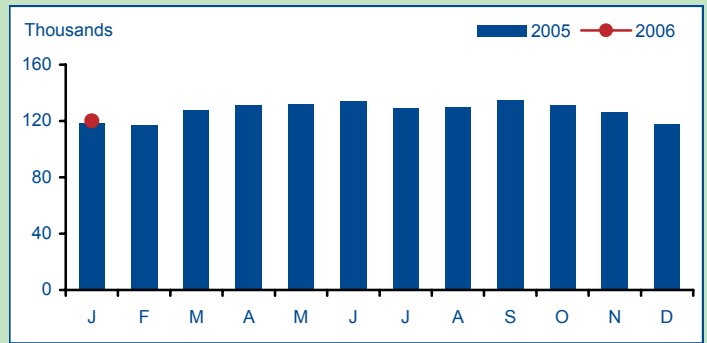
* RPK = Revenue Passenger Kilometre *ASK = Available Seat Kilometre

UTILISATION - January 2006

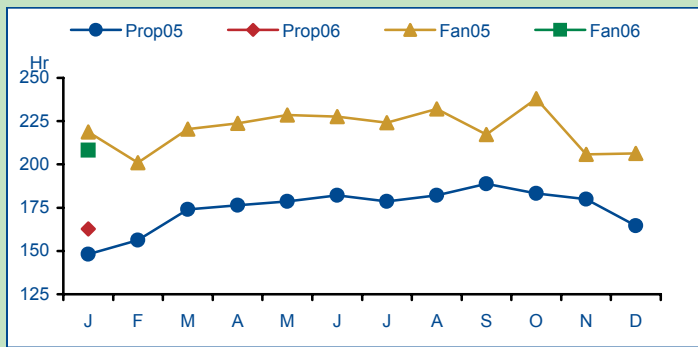
Total Hours



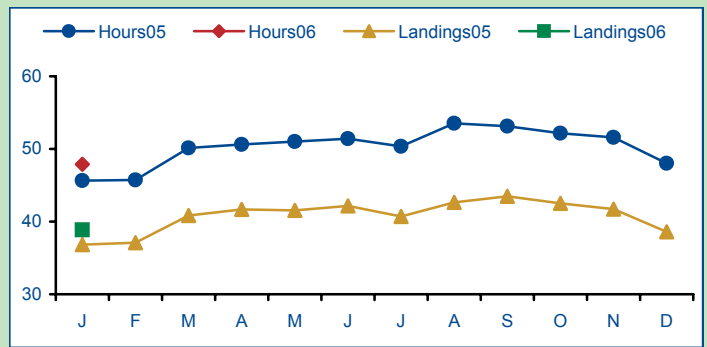
Total Landings



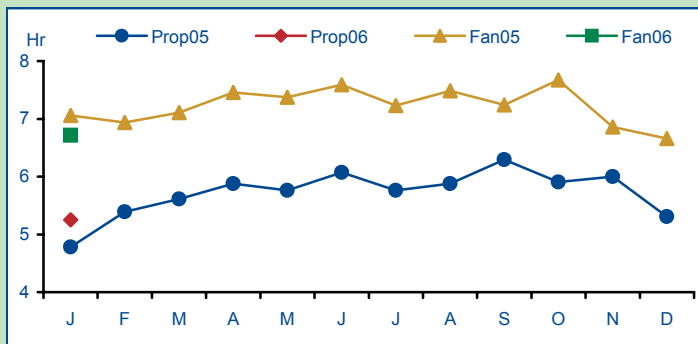
Hours Flown Per Month



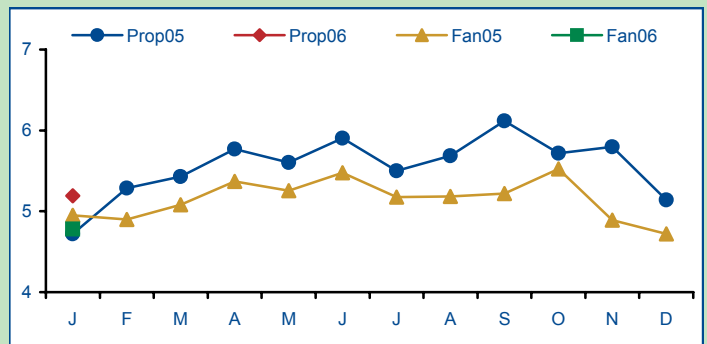
Flight Crew Hours and Landings



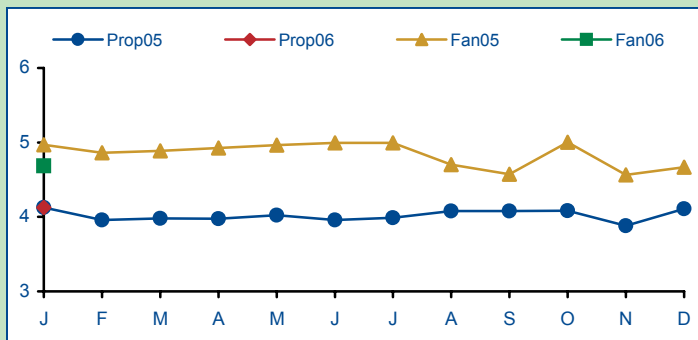
Hours Per Aircraft per Day



Flights Per Aircraft per Day



Flight Crew Members Per Aircraft

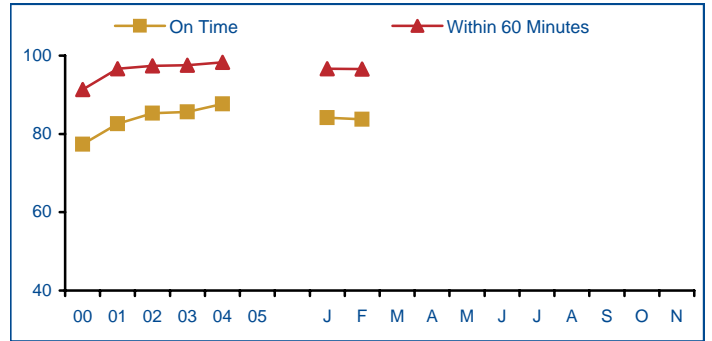


abm^oqrob=mrk`qr^ifqv=J=g~ài~êó=OMMS

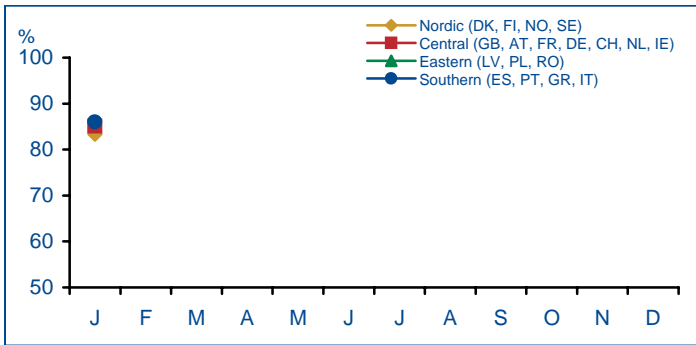
Summary

	2006	2005
On Time*	84%	85%
Within 60 Minutes	97%	97%
% Flights Operated	97.4%	97.0%
% Flights Delayed	15.9%	15.0%

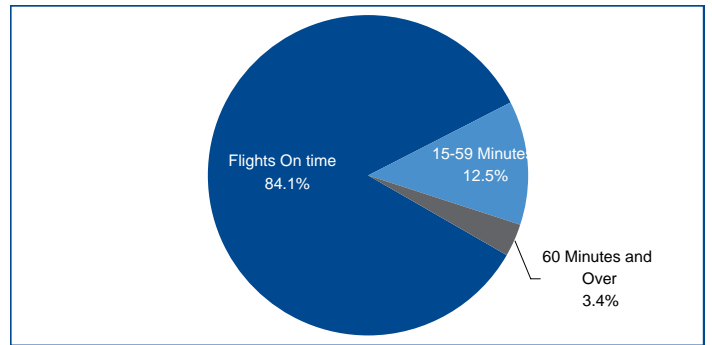
Overall Performance*



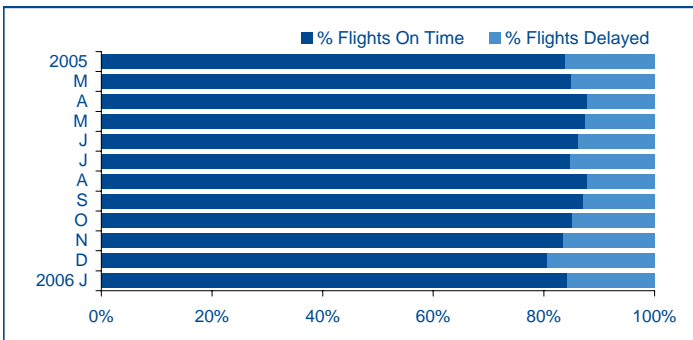
On Time by Region - 2006*



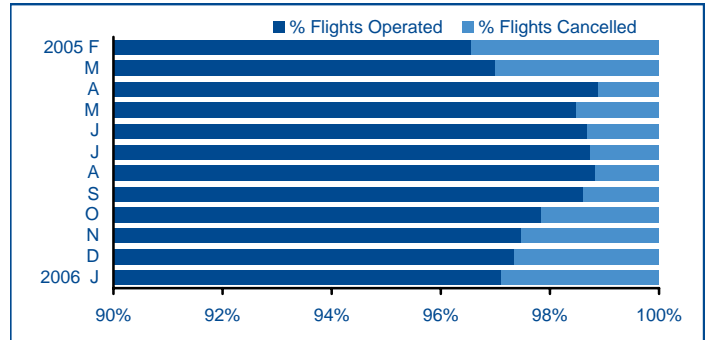
Departure Punctuality*



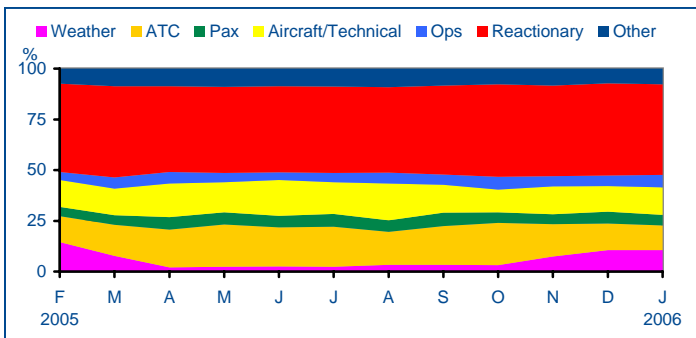
On Time/Delayed*



Operated/Cancelled



Delay Reasons - Within 60 Minutes



* On time departures are all flights departing within 15 minutes of their scheduled departure time

DEPARTURE PUNCTUALITY - INDIVIDUAL AIRLINE STATISTICS

January 2006

	Number of Flights Operated	% Flights On Time*	Points change 06/05	% Flights Within 60 Minutes	Points change 06/05	Regularity (%)	Points change 06/05
Aegean Airlines	3236	87.1	-7.4	97.6	-1.7	99.3	0.0
Aer Arann	2543	92.0	6.0	98.0	6.0	99.6	9.1
Air Alps Aviation	1275	88.9	1.4	96.4	-2.1	94.4	3.7
Air Dolomiti	2277	82.4	1.2	96.1	-1.2	95.7	-2.6
Air Nostrum	12084	86.5	1.4	96.8	1.0	97.6	0.8
Air Southwest	887	75.0	-19.0	87.0	-10.0	98.3	1.1
airBaltic	1860	71.7	-6.4	99.7	0.2	99.7	0.1
Alitalia Express	4192	84.4	-14.3	98.1	-1.9	92.3	0.9
Arkia Israeli Airlines	867	99.7	2.8	100.0	1.0	96.5	-3.5
ATA Aerocondor	755	92.1	7.1	98.6	-1.4	94.7	2.9
Augsburg Airways	1527	83.4	8.5	97.1	1.4	97.6	0.3
Binter Canarias	4253	91.0	-6.0	99.0	-1.0	99.5	0.3
Blue1	2413	83.3	0.2	98.6	1.5	98.5	0.6
Brit Air	7336	85.6	-0.5	97.7	-0.1	96.3	-1.0
Carpatair	1160	78.9	16.3	85.8	3.6	97.9	4.6
Cimber Air	1859	76.4	-5.1	97.6	-0.9	95.9	-2.3
CityJet	2209	83.0	1.0	97.0	1.0	99.1	-0.1
Contact Air	1107	86.0	-0.8	97.3	-1.2	98.6	0.6
Eastern Airways	2813	92.0	3.0	98.0	1.0	99.5	0.8
EuroLOT	2107	63.1	-25.1	87.8	-10.4	88.5	-4.7
Eurowings	4383	78.7	-5.6	95.9	-1.7	97.1	-1.6
Golden Air	839	-	-	-	-	99.4	-
Lufthansa CityLine	12248	82.6	1.1	97.1	0.8	98.1	-0.4
Lufthansa Regional	21542	82.0	0.1	96.8	0.2	97.6	-0.8
Malmö Aviation	1251	91.0	-3.0	99.0	0.0	98.7	-0.6
PGA Portugália Airlines	2434	85.0	-4.0	97.0	-2.0	98.6	-0.6
Régional	9479	87.6	0.9	97.5	0.5	97.1	2.1
SATA Air Açores	807	77.0	0.0	95.7	0.0	98.1	5.2
Skyways	3034	89.0	0.0	-	-	98.0	-0.1
SWISS	10087	84.0	11.0	98.0	1.0	98.9	-0.1
Tyrolean Airways	8511	83.4	5.8	97.7	2.3	98.5	1.1
Widerøe	8097	83.6	5.9	97.1	1.7	92.1	-2.3

* On time departures are all flights departing within 15 minutes of their scheduled departure time

Please note that this table is compiled from data reported to the ERA Directorate by the reporting airlines. ERA does not accept responsibility for the accuracy of the data received.

For an Excel version of the above table please click [here](#)

ERA CONTACT

If ERA airline members wish to contribute statistical data please contact the Directorate at the address opposite.

The Baker Suite, Fair Oaks Airport, Chobham
Woking, Surrey, GU24 8HX
United Kingdom
Tel: +44 (0) 1276 485579
Fax: +44 (0) 1276 859485
Website: www.eraa.org
E-mail: statistics@eraa.org
SITA: LHRZZXH